



# Lismore Regional City Action Plan

---

Submissions summary and engagement report

August 2021



## Acknowledgment of Country

The Department of Planning, Industry and Environment acknowledges the Traditional Owners and Custodians of the land, the Bundjalung people, and pays respect to Elders past, present and future.

Published by NSW Department of Planning, Industry and Environment

[dpie.nsw.gov.au](http://dpie.nsw.gov.au)

Title: Lismore Regional City Action Plan

Subtitle: Submissions summary and engagement report

First published: August 2021

Department reference number: SF18/91087

---

© State of New South Wales through Department of Planning, Industry and Environment 2021. You may copy, distribute, display, download and otherwise freely deal with this publication for any purpose provided you attribute the Department of Planning, Industry and Environment as the owner. However, you must obtain permission if you wish to charge others for access to the publication (other than at cost); include the publication in advertising or a product for sale; modify the publication; or republish the publication on a website. You may freely link to the publication on a departmental website.

Disclaimer: The information contained in this publication is based on knowledge and understanding at the time of writing (July 2021) and may not be accurate, current or complete. The State of New South Wales (including the NSW Department of Planning, Industry and Environment), the author and the publisher take no responsibility, and will accept no liability, for the accuracy, currency, reliability or correctness of any information included in the document (including material provided by third parties). Readers should make their own inquiries and rely on their own advice when making decisions related to material contained in this publication.

# 1. Contents

<b>Lismore Regional City Action Plan</b> .....	<b>0</b>
<b>2. Introduction</b> .....	<b>2</b>
1.1 Lismore Regional City Action Plan Vision and Map .....	2
<b>3. Engagement</b> .....	<b>3</b>
2.1 Overview of engagement activities.....	3
2.2 Summary of survey respondents and workshop participants.....	4
2.2.1 RCAP vision and drivers: Key findings.....	4
2.2.2 RCAP goals: Key findings.....	6
2.3 Summary of submissions.....	7
2.3.1 Government agencies.....	8
2.3.2 Community/interest groups.....	8
3. Key themes – Response .....	8
4. Next steps.....	9
5. Attachments.....	10
Attachment 1 – Detailed changes made to Lismore RCAP following exhibition.....	10
Attachment 2 – Submission summary.....	1

## 2. Introduction

The NSW Government, in collaboration with Lismore City Council, has developed the Lismore Regional City Action Plan (RCAP). The plan establishes a vision, objectives and actions to guide the growth of Lismore city. The RCAP was developed to provide a framework to manage and shape the city's future growth so it conforms with the requirements of the *North Coast Regional Plan 2036* (Regional Plan).

Development of the RCAP is a priority action of the Regional Plan, which was released in March 2017 by the Minister for Planning. The Regional Plan outlines an ambitious vision for the North Coast to be the best region in Australia to live, work and play thanks to its spectacular natural environment and vibrant communities, and sets out four specific goals to guide that work.

A key finding of the Regional Plan under *Goal 2 – A thriving, inter-connected economy* is that three quarters of growth in population and a majority of housing across the North Coast over the next 20 years will occur in Port Macquarie, Coffs Harbour, Lismore and Tweed. The RCAP will be an important tool to plan for the changes we expect to see in these cities towards 2036. The success of these cities will go a long way towards achieving the vision and goals of the Regional Plan.

The draft plan identifies a vision, city drivers, objectives, actions and a delivery framework to:

- ensure planning provisions promote employment growth and greater housing diversity;
- promote new job opportunities that complement existing employment nodes around education, health and airport precincts;
- identify infrastructure constraints and public domain improvements that can make areas more attractive for investment; and
- deliver infrastructure and coordinate an agreed staging and sequencing of development.

The Lismore RCAP has been prepared in collaboration with Council and reflects a coordinated approach across local and state government planning.

Once finalised, the plan will be implemented through the planning and delivery activities of Council and agencies. This will provide ongoing scope for Council to work directly with their community within the framework set out by the plan.

### 1.1 Lismore Regional City Action Plan Vision and Map

The Lismore Regional City Action Plan area map (Figure 1) illustrates the area to which the RCAP applies to. The Lismore RCAP boundary is located west of Goonellabah, and east of the Lismore airport. It includes North, South and East Lismore and the CBD.

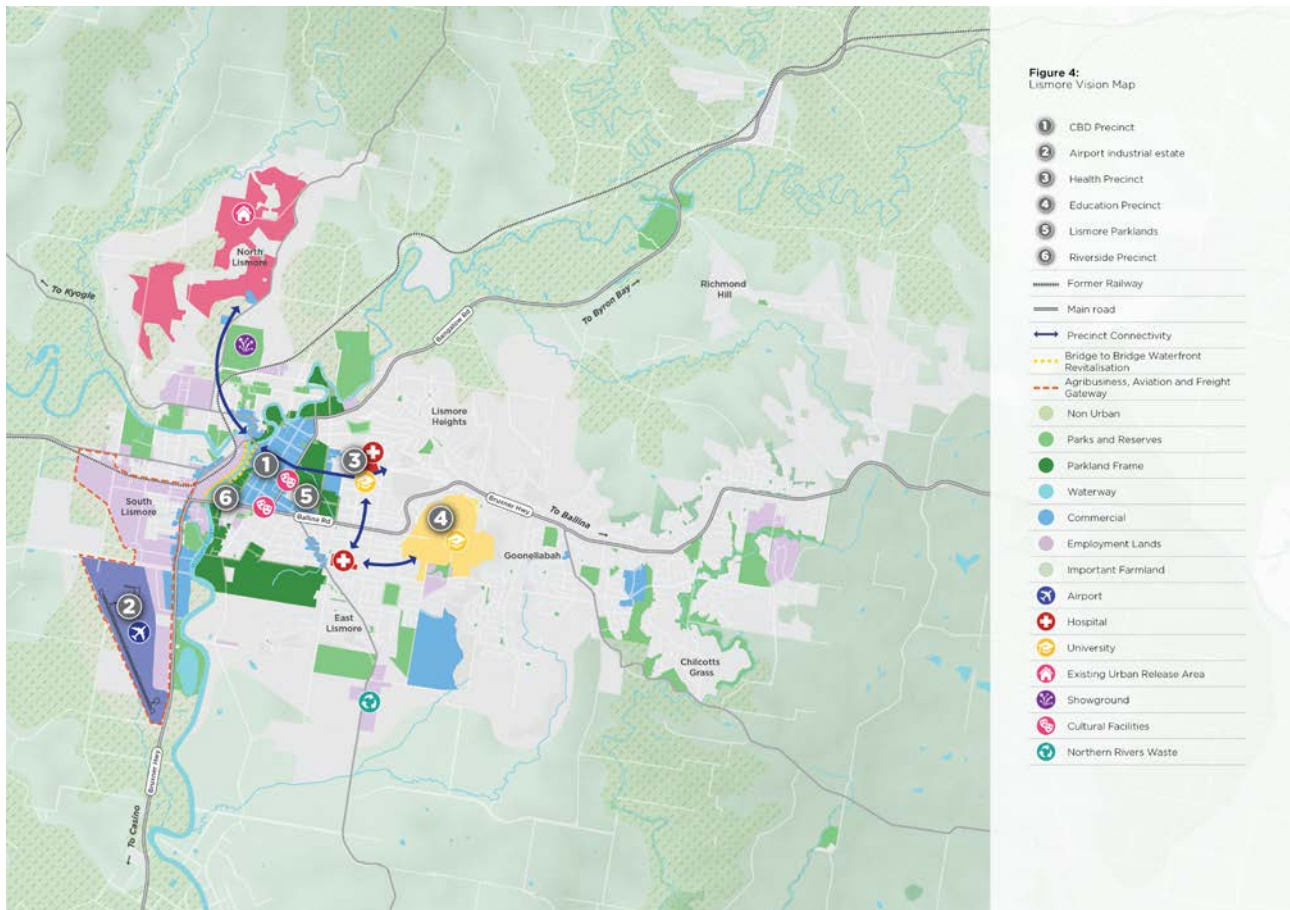


Figure 1: Lismore Regional City Action Plan area map

## 3. Engagement

Community and stakeholder engagement of the Lismore RCAP was carried out in May and June 2021. Due to COVID-19, all community engagement activities were conducted via an online platform with the aim to reach the wider Lismore community as well as more in-depth conversations with key stakeholders. Targeted consultation with the Lismore Chamber of Commerce, Southern Cross University, Arts Northern Rivers and Northern Rivers Performing Arts was also undertaken to inform the development of the plan. Multiple requests for an interview with Ngulingah Local Aboriginal Land Council were made but was unable to proceed during the exhibition period.

The feedback gathered through the consultation period will be used to inform the development of the final Regional City Action Plans.

### 2.1 Overview of engagement activities

Under the formal public exhibition period, the Draft Lismore RCAP was made available on the Department's Planning Portal for public and agency comment between 17 May – 15 June 2021.

Cred Consulting was contracted by the Department of Planning, Industry and Environment (DPIE) to support the public exhibition of the Draft Lismore Regional City Action Plan. Community and stakeholder engagement activities were delivered the formal public exhibition period. An overview of activities is provided in Table 1. In addition to the formal written submissions, over 350 people were engaged online throughout the consultation period across a range of activities, including online surveys, community online workshops, and stakeholder interviews.

A paid social media campaign was conducted from 17 May to 15 June 2021 to raise awareness of the RCAP and encourage the community to provide their feedback. The sentiment was neutral, with people providing constructive criticism about what they want to see improved in Lismore. The most common piece of feedback was to fix the roads, particularly potholes.

Demographically, the campaign was more popular with women (60% overall), particularly women aged 65+ (22% overall). This trend was reflected in all three ads. The campaign achieved two of three objectives, achieving an above-average click-through rate and a below-average cost per click. Webpage traffic increased 97.5% (slightly below the 100% objective), and 12 submissions were made within the campaign timeframe. Campaign success was based on adherence to fundamental social media best practice.

**Table 1 - Overview of engagement activities**

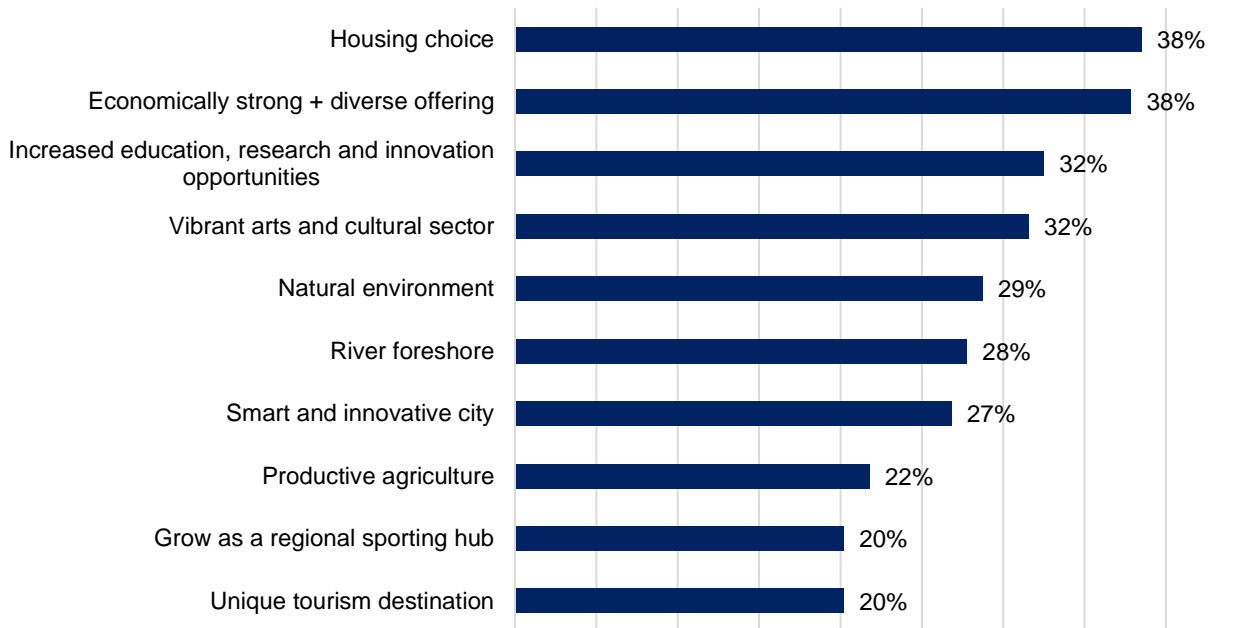
Type	Dates	Details/location	Participants
Online community survey	17 May– 15 June 2021	Accessed via Planning Portal	322
Invited community workshops	2 and 9 June 2021	Online	11
Invited Government and Agencies workshop	1 June 2021	Online	14
Council Workshop and Executive Briefing	2 June 2021 11 June 2021	Online	6 Council staff
Stakeholder interviews & meetings	17 May – 15 June 2021	Online	Lismore Chamber of Commerce; Southern Cross University, NORPA and Arts Northern Rivers.
Social media campaign	17 May – 15 June 2021	Facebook ads	Reach – 89,000 people Click-throughs – 2,227

## 2.2 Summary of survey respondents and workshop participants

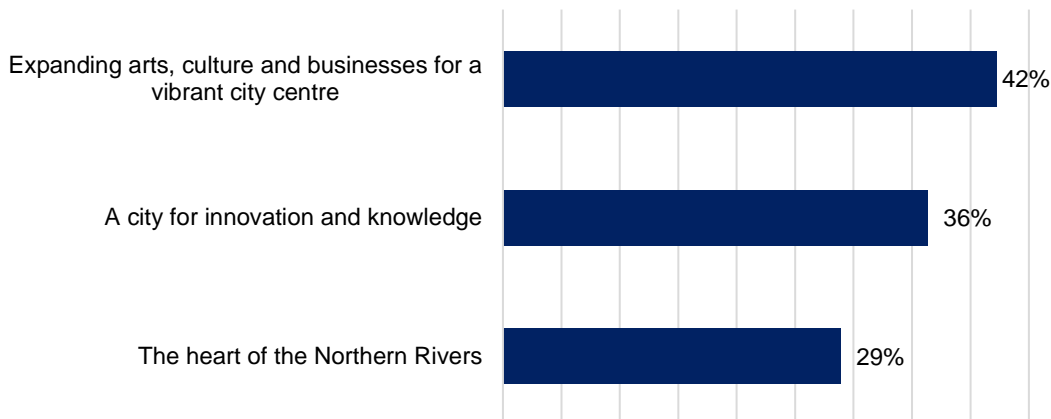
### 2.2.1 RCAP vision and drivers: Key findings

Survey respondents were asked about the draft vision. Participants were asked to select from a list of characteristics which ones were the most important to guide the future growth of Lismore and ensure that it reflects the aspiration of the community. Figure 2 demonstrates the characteristics which participants felt best reflected the future vision of Lismore.

Overall, workshop participants and survey respondents were supportive of the draft Lismore vision. However, many felt that it was a little too generic and a focus on community should be explicit in the vision statement. The natural environment and in particular the Wilson River, the community and the vibrancy of Lismore were identified as being part of Lismore's character. Many respondents saw arts and culture as an important aspect of the Lismore identity and that this creative presence attracts people and supports other local industries such as tourism.

**Figure 2: Characteristics that reflect the future vision for Lismore (% of 322 survey responses)**

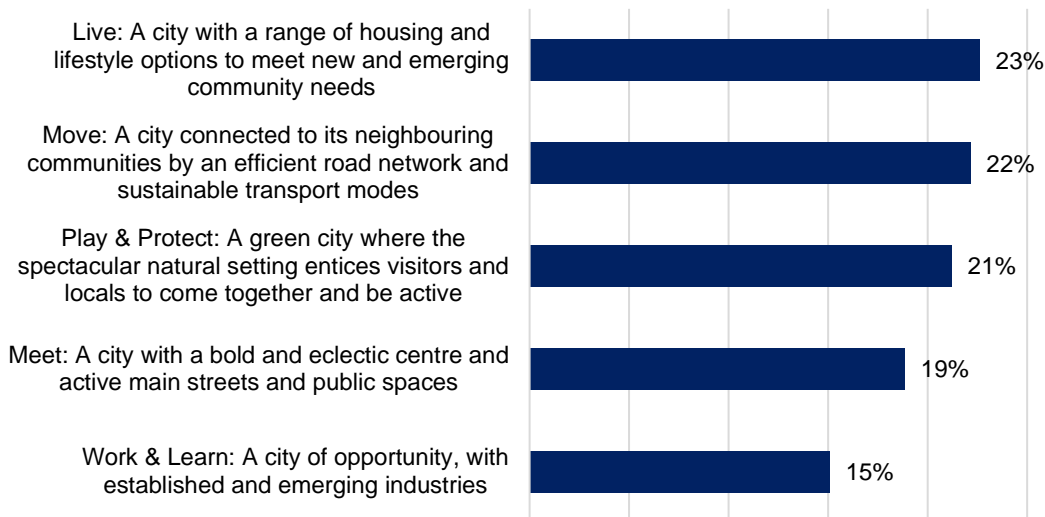
The draft Lismore RCAP identifies 3 key drivers that will influence the future growth and development of Lismore. They are: *Expanding arts, culture and business for a vibrant city centre*, *A city for innovation and knowledge* and *the heart of the Northern Rivers*. Survey participants were also asked which of these drivers they thought were the most important and why. While there was a clear preference by survey respondents, all drivers identified resonated with a proportion of participants. Figure 3 demonstrates participants view of the top future drivers for Lismore.

**Figure 3: The community's view of the top future drivers for Lismore (% of 322 survey responses)**

## 2.2.2 RCAP goals: Key findings

The draft RCAP has 5 main goals. These are to make Lismore a better place to Live, Move, Play and Protect, Meet, Work and Learn. Figure 4 demonstrates the ranking given to the goals by survey respondents.

**Figure 4: Ranking the draft Regional City Action Plan goals (% of 322 survey responses)**



### Live

*A city with a diversity of housing and lifestyle options to meet an equally diverse range of needs*

The 'Live' goal was considered the highest priority and important as housing availability, diversity and affordability is a significant issue in Lismore. For this goal, liveability was also considered as being important, not only for existing residents but to attract new residents to Lismore.

The 'Live' goal was important to participants across all engagement activities, as they value living in a sustainable, liveable and welcoming city. A key concern for participants was housing affordability and an increasing pressure for housing availability within Lismore. This lack of housing options was also identified as a significant challenge to attracting professional services and knowledge workers to Lismore. It also affects Lismore's ability to accommodate much-needed seasonal workers for local farmers and food producers, and more generally, growing the visitor economy within the area. Overall, participants across all engagement activities generally supported this goal and the objectives.

### Move

*A city connected to its neighbouring communities with sustainable transport modes*

The 'Move' goal was ranked second and considered as critical for future growth for Lismore. The poor road infrastructure, lack of adequate local cycling and walking infrastructure were the main issues of concern for all engagement participants. Increasing mobility and connectivity between the city centre, hospitals and university were key discussion points. Overall, participants across all engagement activities generally supported this goal and the objectives.

The feedback from all community and stakeholder participants was that improved cycling and walking connections between key locations within Lismore is important to the future sustainable growth of the area. The feedback from most community members was to get the basics right first and fix the roads. It is noted that while engagement on the draft RCAP was occurring, Transport for



NSW was also consulting on a new road project that was of concern for many community members.

## **Play and Protect**

*A green city where the spectacular natural setting entices visitors and locals to come together and be active.*

Participants valued Lismore's beautiful natural setting, the natural environment, and the tranquillity, as well as the unique bushland. The biodiversity quality of Lismore is considered to be unique and should be valued more highly. Overall, participants across all engagement activities generally supported this goal and the objectives.

## **Meet**

*Lismore is a city with a bold and eclectic centre and active main streets and public spaces*

Among all participants, there was strong support for the objectives across this goal, particularly about the importance of the river and the arts and cultural scene in Lismore. Many commented that while the flooding threat of the river is an issue, there are significant opportunities to embrace the river and make it a feature for Lismore.

Discussion about the Lismore arts and cultural scene focused on ensuring that it creates connections and is authentic to the Lismore story and identity. The plan should embrace the existing cultural and creative ecosystem and sector. It was also discussed that this was the only objective that included Aboriginal culture and that a specific objective to connect with Aboriginal culture should be included. The connection to Aboriginal culture and people needs to be more than through arts alone. The river is a major cultural resource and remains a focus. It is a place that connects and links to many places – it links to national parks and to the hinterland.

## **Work and Learn**

*A city of opportunity with established and emerging industries*

Although the 'Work & Learn' goal was given the least priority by survey respondents, across all activities, participants discussed the importance of this goal specifically to provide opportunities for young people to stay in Lismore, whether they grew up in the area or came to its university. It was suggested that the plan should be explicit about opportunities for local business and supporting them. Tourism, the visitor economy, local business and the local education and health sectors, were a focus of workshop and stakeholder interview discussions.

Many respondents felt that the objectives were adequate to achieve the 'Work and Learn' goal and that no additions were required. Most suggestions offered through the engagement were related to 'keeping things local' and that more affordable housing options and housing availability will help support this goal.

## **2.3 Summary of submissions**

In the formal exhibition period, 12 submissions were received from individuals, an interest group and a government agency. Overall, there was general support for the Lismore Regional City Action Plan. The following subsections detail the agency, interest group and community submissions received and the Department's responses. It is noted that a number of general amendments have been made to the Lismore RCAP to response to comments, suggestions and concerns raised during the community consultation and engagement activities. Attachment 1 outlines the detailed changes to the Lismore RCAP.

### 2.3.1 Government agencies

One government agency submission was received from the Biodiversity and Conservation Division. The submission provided comments on the draft Lismore RCAP and did not object to the plan.

The key matters raised in the submission were:

- Development should not be encouraged in areas which are flood prone or key koala habitat or movement corridors;
- While the use of selected species of trees and understorey plants in target areas to support the movement of koalas and other wildlife and strengthen connection between areas of habitat was supported, it was noted that koala feed trees should not be encouraged as roadside plantings; and
- The draft Lismore RCAP should provide mapping of fauna movement corridors.

### 2.3.2 Community/interest groups

A total of 11 submissions were received from individuals and the Community Housing Industry Association NSW. A detailed submission summary and department response to submissions is provided in Attachment 2. The following broad themes were raised in the formal submissions during the public exhibition period:

- Roads and transport
- Housing affordability and diversity
- The Wilsons River and the environment
- Arts, culture and tourism
- Lismore airport
- Implementation
- Mapping.

## 3. Key themes – Response

This section discusses and responds to the key themes identified in formal submissions regarding the Draft Lismore RCAP that were received by the Department during public exhibition.

### Housing affordability and diversity

The need to address housing affordability and diversity was the most common issue raised in submissions. The main points raised included:

- Mechanisms such as financial incentives, contribution schemes and local planning controls should be initiated to facilitate the development of affordable housing in Lismore
- Support for increased housing in the CBD
- The plan does not include housing targets
- The plan does not include statistics on house prices and analysis on housing demand from people priced out of neighbouring coastal housing markets
- The plan should include an all-of-government response to improve housing access in the region.

### Department response

In order to reflect the feedback received, the *Live* goal has been moved to the front of the document, and the Objectives have been renumbered accordingly. The importance of housing affordability and diversity is highlighted under the existing Objective 16 – *Support community aspirations for greater housing and choice*. The matters raised will also be addressed through the

Regional Housing Taskforce which has been established by the State Government to address housing shortages in regional NSW. The North Coast Regional Plan 2036 includes minimum housing supply for each local government area and is implemented through Council's local planning processes. Lismore City Council will prepare an Affordable Housing Strategy as well as undertake a review of its 2012 Local Housing Strategy as detailed in the Lismore Local Strategic Planning Statement, which may address these matters.

### **Roads and transport**

The need to address road maintenance was a common issue raised in submissions. There was also support given for the development of active travel infrastructure to encourage residents to walk and ride, as well as support for the Rail Trail.

#### Department response

Road maintenance is addressed by all councils in NSW through their Delivery Program and Operational Plans. Balancing the needs of motor vehicles, freight, public transport and opportunities for active travel will be managed through the development of a Lismore Place Plan, in partnership with Transport for NSW as detailed in Collaboration opportunity 11.

### **Wilson's River**

Issues raised in the submissions included support for the implementation of the Bridge to Bridge masterplan. Submissions suggested that the health of the river itself should be a focus of the plan as well as associated landscaping in the surrounding precinct as the river is of critical significance to local Aboriginal people and culture. It was also noted that the measures outlined in the draft RCAP are supported as long as they are undertaken with consideration to local flooding conditions.

#### Department response

To ensure good water management is supported, an additional action has been added: *manage the health of Lismore's waterways, including revegetation, erosion control, weed management and water quality.*

Minor wording changes to Objective 8 have been made to support the need for design to be flood resilient. Development on flood prone land is guided by Lismore's Floodplain Risk Management Plan and Development Control Plan.

### **General discussion**

In addition to the three key themes discussed above, the remaining submissions and responses are detailed in Appendix 2.

It is considered that the majority of comments made within the submissions were generally covered by the draft RCAP that was public exhibited. The Lismore RCAP has been further refined to clarify the position on many of these matters outlined by the plan.

## **4. Next steps**

The Regional City Action Plan will be implemented through the planning and delivery activities of councils and agencies. Progress will be monitored in conjunction with the wider implementation of the North Coast Regional Plan 2036 through the North Coast Delivery, Coordination and Monitoring Committee.

## 5. Attachments

### Attachment 1 – Detailed changes made to Lismore RCAP following exhibition

All Goals and Objectives have been renumbered to allow the *Live* goal to be presented at the front of the document in response to community feedback. The changes below respond to the numbering convention used in the Draft Lismore Regional City Action Plan.

Section	Changes made
<b>Vision</b>	<p>Vision has been worded to include that Lismore is on Bundjalung Country and includes reference to the welcoming community.</p> <p><i>Located on Bundjalung Country, Lismore is a city characterised by natural beauty, productive agriculture and connection to the Wilsons River, a community that is welcoming, artistic and diverse and a thriving local economy that builds on the strong education, health, creative and innovation ecosystem to support a successful Northern Rivers Region.</i></p>
<b>Vision Map</b>	<p>Parkland Frame has been deleted and reclassified as Parks and Reserves</p> <p>A note has been included below the map title: <i>Maps are for illustrative purposes only and should not be used to interpret individual lots.</i></p>
<b>Delivery Framework</b>	<p>Partners added to collaboration areas 2, 3 and 8</p> <p>Collaboration area 2 and 3, Partners: Lismore City Council, Southern Cross University, TAFE, Department of Education</p> <p>Collaboration area 8, Partners: Lismore City Council, Create NSW, local arts organisations, local Aboriginal community, Destination NSW</p>
<b>Lismore at a glance</b>	<p>Moved to the back of the document to reflect that population projections are contextual information and do not change the vision set out in the Lismore RCAP.</p>
<b>Objective 1</b>	No change
<b>Objective 2</b>	Minor rewording to explicitly reference the availability of public schools.
<b>Objective 3</b>	No change
<b>Objective 4</b>	No change
<b>Objective 5</b>	Minor rewording to include: <i>Land uses should not be supported which compromise Important Farmland, as identified in the North Coast Regional Plan 2036.</i>
<b>Objective 6</b>	No change
<b>Objective 7</b>	No change
<b>Objective 8</b>	<p>Wording added: <i>The River is of critical importance to local Aboriginal people.</i></p> <p>Wording added: <i>Further planning will be undertaken to ensure the precinct is flood resilient.</i></p> <p>Minor wording change: delete 'accommodation'</p>

Section	Changes made
<b>Objective 9</b>	Objective reworded to: Strengthen and grow the cultural and arts scene
<b>Objective 10</b>	No change
<b>Objective 11</b>	Action 11.4 deleted  Action 11.4 added: <i>Manage the health of Lismore's waterways, including revegetation, erosion control, weed management and water quality.</i>
<b>Objective 12</b>	Objective reworded: Continue to develop Lismore as a regional sports hub and enhance sport and recreational facilities
<b>Objective 13</b>	Wording added to explicitly reference Nimbin and The Channon.  Slight wording change to Action 13.4 to delete reference to 'rural landscape areas', and replace with 'rural areas'
<b>Objective 14</b>	No change
<b>Objective 15</b>	Strategy 15.1 reworded to: <i>Increase active and public transport</i>  Wording of Collaboration opportunity 12 updated to reflect Council's Cycleway and Pedestrian plan which is currently under development
<b>Objective 16</b>	Text has been deleted as the relevant policy has expired and may not be reinstated: <i>Council has also offered local incentives in the form of waived or reduced development contributions.</i>  Text added: <i>The North Coast Regional Plan encourages councils to deliver 40% of new housing in the form of dual occupancies, apartments, townhouses, villas or on lots less than 400 square meters by 2036. Council will investigate additional locations for increased housing density in accordance with its Growth Management Strategy and Affordable Housing Strategy, to be completed in the short term.</i>  Text added: <i>In the short term, Lismore City Council will prepare an Affordable Housing Strategy.</i>
<b>Objective 17</b>	No change
<b>Objective 18</b>	Objective reworded to: Research responses to Lismore's hazards and climate change to inform resilience and adaption strategies, including future zoning and planning controls  Text added: Lismore City Council will prepare a Climate Resilience and Adaptation Plan in the short term to identify actions that respond, adapt and build resilience to climate change risks and impacts.  Department of Planning, Industry and Environment added as a partner to Collaboration opportunity 13.

## Attachment 2 – Submission summary

Submission theme	Submission summary	Department response
Renewable energy	The target to generate 100% of electricity needs from renewable sources by 2023 is ambitious.	Addressed in Objective 3. This target is set in the Lismore City Council <i>Renewable Energy Master Plan</i> and contributes to the State government's goal of net-zero emissions by 2050.  No change to the Plan.
Airport	The airport is not suitable as an export facility due to the length of the runway, location in a flood prone area and fog.	Addressed in Objective 5 which outlines the investigation of the airport as a potential training and export facility. An Instrument Landing System allows aircrafts to safely land during periods of low visibility.  No change to Plan.
Roads and transport	Support for partnership with Transport for NSW to develop an integrated place-based transport network.	Noted. Addressed through Objective 14.  No change to Plan.
	Council road reserves are overwhelmed by noxious weeds which can be invasive and impact on adjoining land. Although support is given for revegetation of degraded landscapes, road reserve management should be the priority.	Weed management of road reserves is outside the scope of this plan. Regeneration of bushland is addressed through Objective 11.  No change to Plan.
	Existing roads require upgrading and ongoing maintenance.	Road maintenance schedules are outlined in the Council Delivery Program and Operational Plan and is outside the scope of this Plan.  No change to Plan.
	Support for the Rail Trail.	Noted. No change to Plan.
	Support for active transport infrastructure to encourage children and older adults to walk and ride.	Noted. No change to Plan.

Submission theme	Submission summary	Department response
Sports	Support for continued growth of sports infrastructure as the existing facilities in the City provide a good “launching pad” for further development.	Noted. No change to Plan.
Wilsons River	The river should be used for international standard rowing and canoeing course to facilitate tourism and contribute to Lismore’s position as a sporting hub.	Future activation and management of the Wilsons River is proposed to be guided by the preparation of the Wilsons River Bridge to Bridge masterplan as detailed in Objective 8.  No change to plan
	The health of the Wilsons River should be a focus of the plan rather than the associated landscaping. This could include researching how the water quality could be optimized.	<i>Action 11.4 added to Manage the health of Lismore’s waterways, including revegetation, erosion control, weed management and water quality</i>
	Support for implementation of the Bridge to Bridge masterplan	Noted. No change to Plan
	The measures in Action 8.1 are supported as long as they are designed with consideration given to flood conditions that will be experienced and they do not impede flood conveyance.	Minor wording changes to Objective 8 have been made to support flood resilience. Development on flood prone land is guided by Lismore’s Floodplain Risk Management Plan and Development Control Plan.
Tourism	Lismore does not currently have a functioning Tourist Information Centre which sends a negative message to the industry that tourism is not a priority.	Noted. Support for local tourism will be facilitated through Collaboration Activity 10. Lismore City Council and Rous County Council have signed a three-year lease for Rous to rent the Lismore Visitor Information Centre on Molesworth Street. Lismore Council will provide tourism information at both Lismore and Nimbin and, will work with Rous to develop cultural tourism opportunities.

Submission theme	Submission summary	Department response
Housing affordability and diversity	Facilitating affordable, medium density housing in Lismore is critical. Council policies to support the delivery housing types such as secondary dwellings and dual occupancies are no longer in operation.	The Plan notes that Council has 'local incentives in the form of waived or reduced development contributions. The Section 64 and Section 94 Contributions Discount Policy has expired and there is no discount policy currently in operation. This text has been removed.
	Financial incentives to provide affordable, medium density housing should be applied based on the type and scale of housing proposed.	Actions 16.1 and 16.2 encourage the provision of affordable housing. Explicitly setting financial incentives is outside the scope of this Plan. No change to Plan.
	The Plan does not have housing targets required to accommodate new residents.	Objective 16 updated to encourage 40 percent of new housing to be in the form of dual occupancies, apartments, townhouses, villas or dwellings on lots less than 400 square metres by 2036 in accordance with the North Coast Regional Plan 2036 and that Council is to investigate suitable locations for increased housing density in accordance with the Lismore Growth Management Strategy 2015-2035.
	The Plan does not include any statistics on house prices, homelessness or contemporary analysis on the housing demand from people priced out of the coastal housing market.	A Regional Housing Taskforce has been established to address housing shortages in regional NSW. All councils will also have access to local government data packs to be published by the Department of Planning, Industry and Environment. No change to plan
	Support for housing in the CBD	Noted. No change to Plan.
	Support for Action 16.2 to facilitate an increase in affordable housing options	Noted. No change to Plan.
	The Plan should commit to the development of an all-of-government affordable housing strategy and delivery plan that considers the needs of very low, low- and median-income households in Lismore and the potential sources of new supply.	Affordable housing will be addressed through the Regional Housing Taskforce has been established to address housing shortages in regional NSW. No change to Plan.



Submission theme	Submission summary	Department response
	The Plan should commit to the establishment of affordable housing contributions schemes for any new planning proposals that would result in development uplift or an increase in land value.	Council will update the 2012 Local Housing Strategy, as detailed in its Local Strategic Planning Statement. The updated Local Housing Strategy and other local planning processes such as the development of the Lismore Affordable Housing Strategy are the appropriate pathways to address contributions schemes. No change to Plan.
	The Action Plan needs to commit to the identification of a pipeline of sites which could be used to support a long-term program of affordable housing partnerships with Community Housing Providers.	Council will update the 2012 Local Housing Strategy, as detailed in its Local Strategic Planning Statement. The updated Local Housing Strategy and other local planning processes are the appropriate pathways to address site specific matters.  Action 16.2 aims to form partnerships to facilitate an increase in affordable housing, including Community Housing Providers. No change to Plan.
	Suggested that the plan direct that land owned by all levels of government should be used to increase affordable housing supply, including renewal of existing public housing sites.	This matter is more appropriately investigated through the Regional Housing Taskforce which has been established to address housing shortages in regional NSW and processes such as the Crown Lands reforms. Lismore City Council will also prepare an Affordable Housing Strategy. No change to Plan.
	Local planning controls should be reviewed to ensure they support the feasibility of genuinely affordable housing. This should include incentives such as reduced car parking rates and density bonuses. Design controls should be reviewed to ensure they recognize the specific needs of social and affordable housing tenants.	Objective 16 includes actions to deliver affordable housing options. Design controls are managed through Council's local planning processes. Design controls may be considered in Council's updated Local Housing Strategy and Affordable Housing Strategy. No change to Plan.
	The planned future urban release areas such as Pineapple Road and Trinity Drive, Goonellabah and North Lismore Plateau do not appear to be subject to flooding.	Noted. No change to Plan.

Submission theme	Submission summary	Department response
	Additional housing density in the CBD is constrained by flooding, unsafe for people and vehicles during a flood event and structural building damage may occur. Limited development east of Diadem street may be out of flood area.	Noted. No change to Plan.
	Suggestion that if the North Lismore Plateau development proceeds, a proportion should be dedicated affordable housing, and Lismore City Council should enter into a partnership agreement with local First Nations people to build and service the development in order to positively contribute to reconciliation	Noted. No change to Plan.
Agriculture	The plan should be stronger in supporting the agricultural sector to reduce environmental impacts such as soil loss and erosion, particularly regarding macadamias.	Minor word changes to the supporting text of Objective 5, including the requirement for land uses not to negatively impact Important Farmland, as identified in the North Coast Regional Plan 2036.
Lismore Justice Precinct	The Lismore Justice Precinct should be referenced as a driver of growth in the Plan as the major courts service provider in the region.	Objective 1 refers to 'professional services precincts' which incorporates the Justice Precinct. Action 1.4 directly relates to the development of the Justice Precinct. No change to Plan.
	The wording of Action 1.4 <i>Support innovative ways to grow the Justice Precinct</i> is unclear and the Action should refer to the funding required to expand the precinct.	Noted. Funding outside the scope of this plan and will be subject to further investigation. No change to Plan.
Urban amenity	Support for Objective 6 and its intention to improve urban amenity and increase nighttime economy opportunities.	Noted. No change to Plan
Arts and Culture	Objective 9 <i>Expand the cultural and arts scene</i> is unnecessary as the Lismore arts scene is thriving and will continue without support.	The success of Lismore will be supported by a thriving arts and culture sector as is identified in the three City Drivers. No change to Plan.
	Support the Plan's objectives to grow and support of creative industries.	Noted. No change to Plan.

Submission theme	Submission summary	Department response
Young people	The Plan should include specific focus on young people (10-18 years) and include an upgrade and expansion of the Lismore Skate Park	<p>Objective 10 includes the provision of open spaces and recreational areas for all ages including through the facilitation of the <i>Everyone Can Play</i> guidelines, although it does not specifically reference young people.</p> <p>Management of Council's recreational facilities are detailed in Council's Sport and Recreation Plan 2011-2021. No change to Plan.</p>
Education	Student numbers are declining at Southern Cross University and funding is limited, making it difficult to achieve the aspiration of Lismore becoming 'the Learning City'	The Plan is intended to be aspirational and identify key drivers for future growth of the city. No change to Plan.
	The Plan does not mention equitable and affordable early childhood education access or public primary and high schools	Affordable access to education is outside the scope of this Plan. As noted in Objective 2, there are a range of schools servicing Lismore. Objective 2 has had minor rewording to explicitly reference the availability of public schools.
Tourism	The Plan doesn't mention the Lismore LGA villages such as Nimbin, The Channon etc. which are relevant for tourism	While the villages of Lismore LGA are outside the scope of this Plan, Objective 13 has been amended to address the role of the villages in Lismore's overall tourism offering.
Mapping	Mapping around employment lands and residential areas on the edge of the CBD is conflicting on different maps and residents would appreciate clarification on what maximizing employment lands will mean for current residents. For example, the Southern end of Molesworth Street appears to have different classifications in Figure 4, 6 and 11.	<p>The maps within the Plan are for illustration purposes only and are not to scale, nor do they propose alteration of current zoning or any residential areas.</p> <p>The Vision Map (Figure 4) has been amended to include a note explaining that maps are for illustrative purposes only.</p>
	Land in Figure 4 is described as 'Parkland Frame', but there is no definition of this term	Parkland frame is a term used to describe the parkland which surrounds the north, western and eastern aspects of the Lismore CBD. Parkland frame has been deleted and all have been reclassified as Parks and Reserves.

Submission theme	Submission summary	Department response
Environment	The Plan should allow residents to undertake sustainable lifestyles	Noted. No change to Plan.
	Support residential growth being directed away from areas of known koala habitat or movement corridors	Objective 11 addresses the need for growth to be directed away from areas which may compromise koala habitat or corridors. This will be further strengthened through the development of the Koala Plan of Management to be developed by Lismore City Council as outlined in Objective 11. No change to Plan.
	Support for the use of selected species of trees and understorey plants in targeted areas to support the movement of wildlife, however koala feed trees should not be encouraged as roadside plantings or other areas that could increase the risk of vehicle strikes on koalas.	Noted. Specific matters relating to locations of koala feed trees can be addressed through the LGA-wide Koala Plan of Management which will be developed by Council as outlined in Objective 11. No change to Plan.
	The Plan does not reference Council's <i>Urban Green Corridors Plan</i> or identify existing fauna movement corridors. The Plan should include maps to show these corridors and consider how to connect corridors.	The Urban Green Corridor Plan is referenced in Objective 11. This and the Koala Plan of Management are the appropriate places to detail the existing corridors. No change to Plan.
Flood	Council is currently reviewing its floodplain management plan and the Plan could address the Council's intent for higher housing density in the CBD and provide guidance on its feasibility, possible location and viable housing form.	Through Objective 6, the Plan supports the provision of housing in the city centre where flooding risk can be mitigated and is driven by the local planning framework. No change to Plan.
Implementation	The day to day responsibilities of Council (managing roads, rates, rubbish) should be the priority and the amount of proposed actions may further impact Council's ability to deliver these for the community	Noted. No change to Plan.

Submission theme	Submission summary	Department response
	The Plan needs to articulate how Objective 2 <i>Position Lismore as the Learning City</i> will be funded and what outcomes will be delivered	Noted. Delivery of the RCAP will be done by the responsible bodies and implementation will be overseen by the North Coast Regional Plan Delivery, Coordination and Monitoring Committee. No change to Plan.
	Further consultation should be undertaken prior to finalization of the plan	Consultation has been undertaken in line with the Department's Community Participation Plan and advertised through Council's pathways including the <i>Your Say Lismore</i> webpage. No change to Plan or exhibition.
	Without funding commitment, the actions in the plan will not be implemented	Delivery of the RCAP will be done by the responsible bodies and implementation will be overseen by the North Coast Regional Plan Delivery, Coordination and Monitoring Committee. Funding is a matter for ongoing discussion. No change to Plan.
Other	The NSW planning system is not a 'mum and dad' user-friendly system	Noted. Outside the scope of the Plan. No change to Plan.