



Legend



Hand Auger Location



Sub-area Boundary

0 150

Approximate Scale Metres

Source: Department of Lands Six Viewer, accessed October 2008



Phase 2 Contamination Assessment
Marsden Park Industrial Precinct
Marsden Park Developments Pty Ltd

job no | 21-17717
file ref | 21-17717P2 - 5e.cdr

Sampling Locations - Adjacent piggery

date | November 2008

Figure 5e



Legend



Hand Auger Location



Surface water sampling location



Sub-area Boundary



Source: Department of Lands Six Viewer, accessed October 2008



CLIENTS | PEOPLE | PERFORMANCE

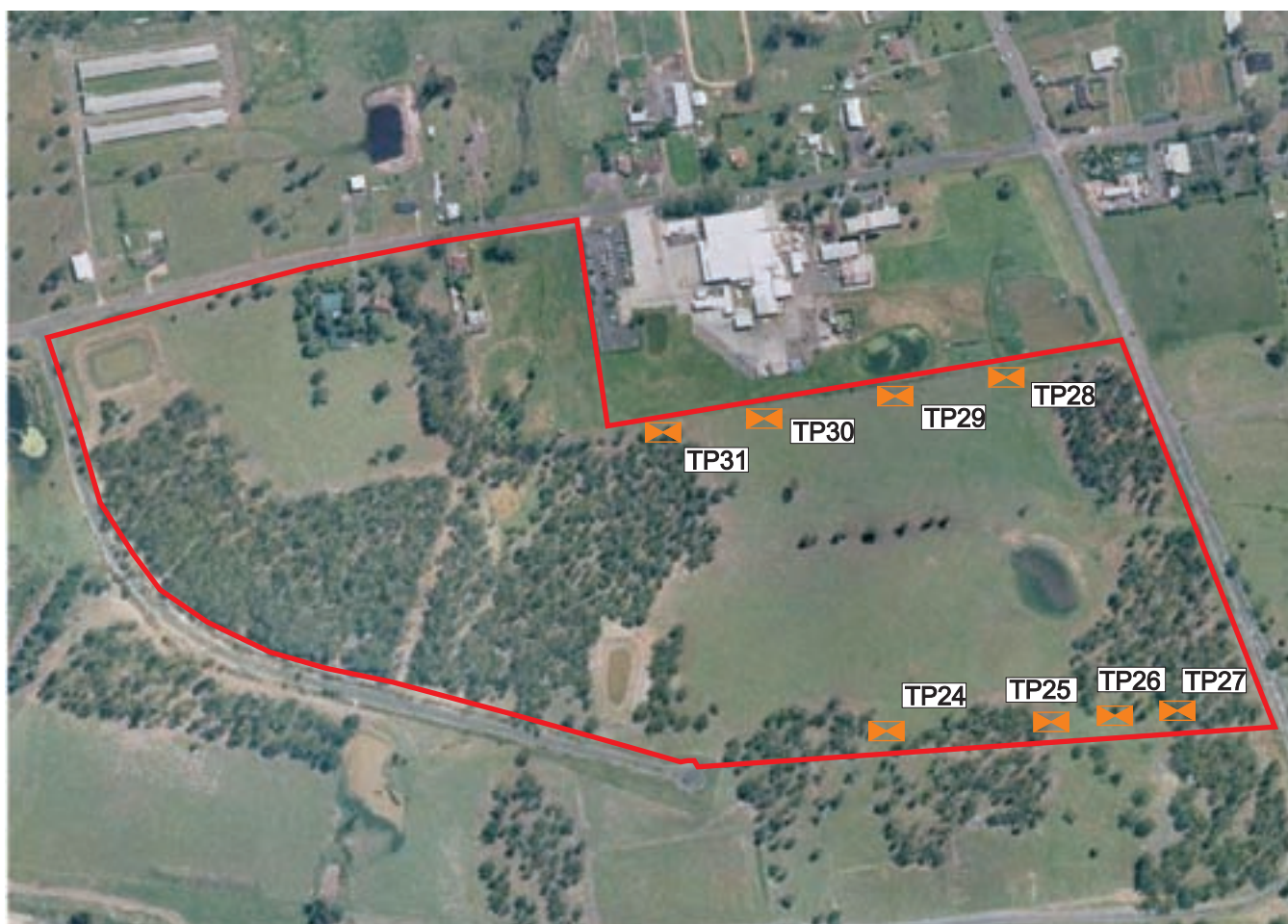
Phase 2 Contamination Assessment
Marsden Park Industrial Precinct
Marsden Park Developments Pty Ltd

Sampling Locations - Piggery



date | November 2008

job no | 21-17717
file ref | 21-17717P2 - 5f.cdr

Figure 5f



Legend

-  Test Pit Location
-  Sub-area Boundary



Source: Department of Lands Six Viewer, accessed October 2008



Phase 2 Contamination Assessment
Marsden Park Industrial Precinct
Marsden Park Developments Pty Ltd

job no | 21-17717
file ref | 21-17717P2 - 5g.cdr



Sampling Locations - Adjacent Steggles and Council Depot

date | November 2008

Figure 5g



Legend

-  Monitoring Well Location
-  Sub-area Boundary



Source: Department of Lands Six Viewer, accessed October 2008



Phase 2 Contamination Assessment
Marsden Park Industrial Precinct
Marsden Park Developments Pty Ltd
**Sampling Locations -
Machining Business**
date | November 2008

job no | 21-17717
file ref | 21-17717P2 - 5h.cdr

Figure 5h



Legend



Test Pit Location



Sub-area Boundary



Source: Department of Lands Six Viewer, accessed October 2008



CLIENTS | PEOPLE | PERFORMANCE

Phase 2 Contamination Assessment
Marsden Park Industrial Precinct
Marsden Park Developments Pty Ltd

job no | 21-17717
file ref | 21-17717P2 - 5i.cdr

Sampling Locations - Bells Creek Nursery

date | November 2008

Figure 5i



Legend



Hand Auger Location



Sub-area Boundary

0 25

Approximate Scale Metres

Source: Department of Lands Six Viewer, accessed October 2008



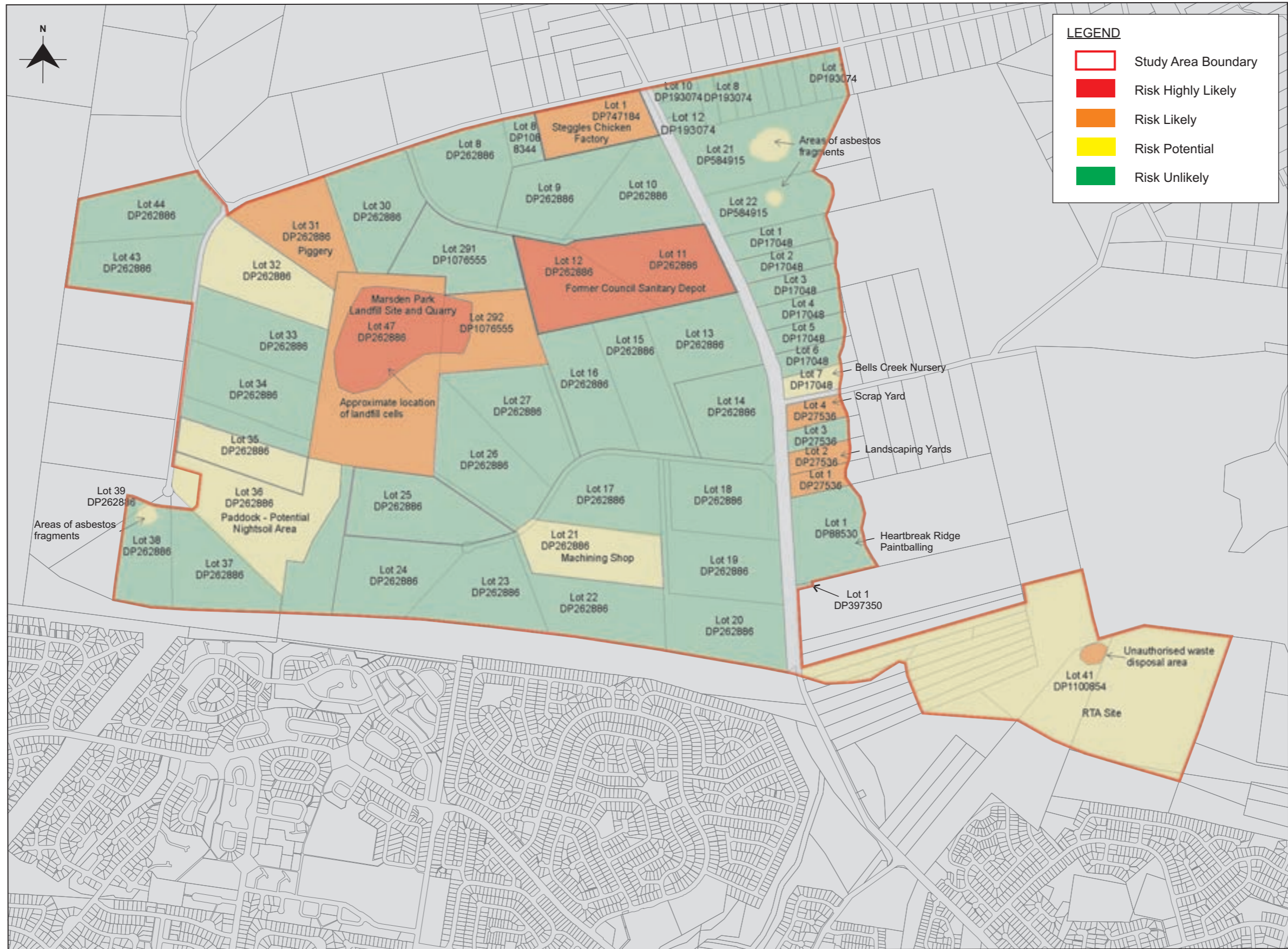
Phase 2 Contamination Assessment
Marsden Park Industrial Precinct
Marsden Park Developments Pty Ltd

job no | 21-17717
file ref | 21-17717P2 - 5j.cdr

Sampling Locations - Paintball site

date | November 2008

Figure 5j



GHD Note: Not all areas of the Site have been accessed therefore some risk rankings may be subject to change

Source: Growth Centres Commission

