



Parks for People

Phase 2 Engagement Outcomes Report

Caddies Creek Sports Complex, Beaumont Hills

December 2021

JOCCONSULTING
creative urban planners



© JOC Consulting 2021
All care has been taken to prepare this
report for the NSW Department of Planning, Industry and Environment.
If you have any queries regarding this
report please get in touch:

John O'Callaghan, Director
+61 0400 471 469
john@jocconsulting.com.au
jocconsulting.com.au

Contents

Acknowledgement	4
Executive Summary	5
What we heard in Phase 1	
What we heard in Phase 2	
Feedback on the design features	
Feedback on recreation within the park	
Feedback on public art	
Issues and considerations	
Where to from here	14
Appendix A – Online survey analysis	15
Appendix B – Social Pinpoint Ideas board analysis	19

Acknowledgement of Country

This document acknowledges that Beaumont Hills is on Aboriginal land where the traditional custodians have been caring for Country for more than 70,000 years.

We pay our respects to the Traditional Owners of this land, their Elders past, present and emerging, and acknowledge the continued rich culture and heritage of all Aboriginal people on this land.

“The existing structures of the sky train should be used as blank canvases for Aboriginal artwork, murals and references to local history.”

- Online ideas wall participant, Phase 2

Executive summary

The New South Wales Department of Planning, Industry and Environment (DPIE) has commissioned JOC Consulting to assist with the delivery of community engagement for the upgrades to Caddies Creek Sports Complex in Beaumont Hills, as part of the Parks for People Program.

The community's input during the first phase of engagement (September 2021) helped to shape a vision for the future park and guided some of Australia's best designers and landscape architects to create a draft Concept Design that builds on the rich natural, cultural, and social fabric of the area (see below).

This Engagement Outcomes Report presents the results from the second phase of consultation that sought community feedback on the Draft Concept Design. The consultation took place between 24 November and the 15 December and captured the feedback from 37 community members.

Overall, the majority of participants confirmed that *"The design team is on the right track"*, - with 69% of participants agreeing with this statement. Of those who disagreed with this statement, the size of the skate/BMX park was the most common comment, as they wished to see the site provide a full sized skate park, something they felt was missing in the Hills area. Broadly, participants appreciated the variety of activities the design accommodates for, and are looking forward to a space that is active and vibrant.

Figure 1: Draft Concept Design presented to the community during Phase 2 engagement



"I like the fact that this design will cater for kids of all ages"
- Online ideas wall participant

What we heard in Phase 1

The first phase of engagement was held entirely online in September 2021, capturing feedback through an online survey, interactive Social Pinpoint map and written submissions.

Online COVID-safe engagement hub

217

Engagement participants

Ranging from 18 to 65 years of age

59% female, 40% male

87% living within 10 minutes' walk of the site

The key priorities for the community were:



An active space with action-based sport facilities for everyone



A fun and inclusive space with opportunities for exploration



A green space with places to walk for park users and their dogs

3,387

Total site visits

151

Online survey responses

126

Social pinpoint comments

1

Submissions

Some of the community's big ideas included:

- A BMX pump track for all ages and abilities
- Sports courts that accommodate a mix of uses
- A walking and cycling loop connected to the wider regional network of trails
- A skate park which encourages social interaction
- Play equipment that encourages kids to imagine and explore
- Abundant tree planting for natural shading
- Outdoor exercise equipment and walking track
- Facilities for users with pets
- Adequate lighting to maximise hours of use

What we heard in Phase 2

Participants expressed an excitement for the diverse sports and recreational space, that provides for a wide range of age groups through the provision of an action sports zone, multi-use courts, and play opportunities. The community also valued the incorporation of art to create further vibrancy within the space, and tell stories of local history and culture – it was widely recognised that the existing infrastructure provides a great canvas for this opportunity.

The number one priority captured during the phase two engagement was a need for a larger and full-sized skatepark that accommodated for all age groups and skills levels. Importantly participants felt that a successfully designed skate park provided opportunities for people on all modes to use the space, including scooter, BMX, and roller skates. Creating a space that welcomed older kids and teens to socialise in an intergenerational environment was a priority for participants, noting that Caddies Creek Sports Complex with its proximity to public transport, made it easily accessible for local youth.

Figure 2: A word cloud based on ideas wall phrases



Online COVID-safe engagement hub

37

community members participated

Ranging from under 18 to 65 years of age

56% female, 44% male

19% of participants speak a language other than English at home

75% living within 10 minutes' walk of the site

1,537

visits

657

unique visitors

42

Ideas wall comments

16

Online Survey responses

“Skatepark”

Was the most popular word used on the ideas wall

Feedback on the design features

Phase two engagement participants were asked to provide further input on several key design features that we heard the community wanted to see during the phase 1 engagement. The following table outlines feedback that was captured for each of these design features on the Ideas wall, along with feedback received from the online survey where appropriate.

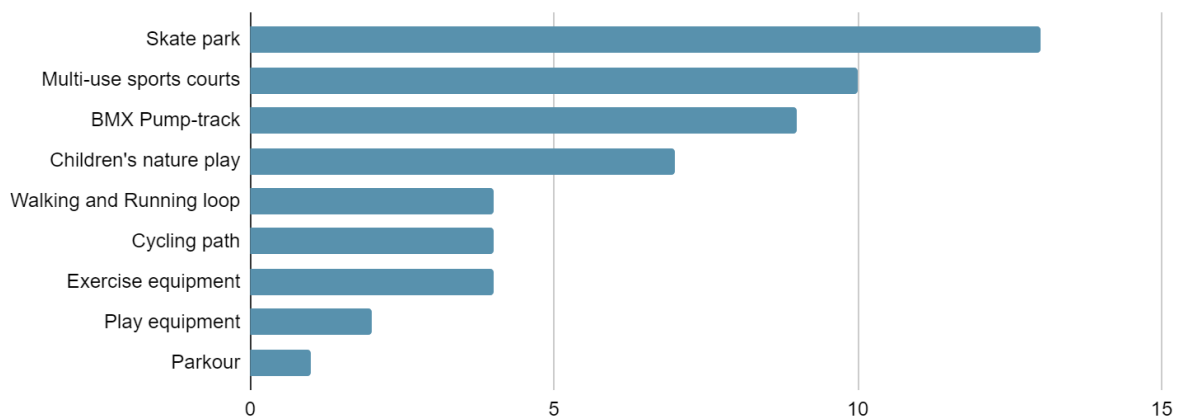
Design feature	What did the community like?	Additional ideas from the community
<p>Skate park</p> <p>(A full-sized and professionally built skatepark was the top priority, creating a local destination for youth in the area to socialise)</p>	<ul style="list-style-type: none"> Creating a social hangout space near the metro and bus station for youth to hang out The skatepark responds to a current lack of provision in the hills The facility provides an opportunity for intergenerational play 	<ul style="list-style-type: none"> Larger facilities – extending the skate area Half-pipes and pools of various depths to cater for all skill ranges Flat surfaces for roller skating Incorporating the viaduct supports into the skatepark Including paths and tracks to accommodate learner riders and young children
<p>Multipurpose spaces and courts</p> <p>(The design provides a variety of play and activity spaces for organised sports)</p>	<ul style="list-style-type: none"> The variety of courts accommodating multiple uses The feature is congruent with the identity of the park Large greenspace to accommodate for plenty of movement The space responds to the need for more youth spaces in the LGA 	<ul style="list-style-type: none"> Allocate spaces for tennis courts Smart layout of the basketball courts, ensuring they face in opposite directions to minimise clashing Outdoor gym equipment Filtered water available near the courts Lighting at night so that facilities can be enjoyed for longer hours
<p>Connecting to nature</p> <p>(Shaded areas from trees and structures encourage people to gather and enjoy the outdoors all year round)</p>	<ul style="list-style-type: none"> The importance of rest areas and shaded seating Planting more trees to provide shade Providing an opportunity for respite in a space that has a relationship to the sky rail 	<ul style="list-style-type: none"> Incorporating water features for relaxation and cooling Provision of picnic shelters Low maintenance street furniture that responds to the risk of bird droppings and rubbish ruining the user experience Guided nature walks to enhance connection to nature and environmental appreciation

<p>BMX Pump track</p> <p>(Establishing a pump track for formal BMX facilities in the park)</p>	<ul style="list-style-type: none"> ▪ The community appreciated the consideration for non-traditional sports, like BMX and skating, in line with the growing trend in the community 	<ul style="list-style-type: none"> ▪ Features that are Inclusive of younger bikers and creating a safe environment for all skill levels ▪ Consider that there are already 2 BMX facilities in LGA that were recently upgraded – skate park is of higher importance
<p>Telling local stories</p> <p>(Utilising art to create a vibrant Park and reflect Beaumont Hills as a community)</p>	<ul style="list-style-type: none"> ▪ Agree that more colour and more art is needed in The Hills. 	<ul style="list-style-type: none"> ▪ Utilising the existing structures of the metro pylons as a blank canvas for Aboriginal artwork and references to local history ▪ Murals and feature walls painted in the park ▪ Using the skatepark as a canvas

Feedback on recreation within the park

Participants were asked which sports and recreational opportunities were most suitable for the new space in the Caddies Creek Sports Complex. In line with the broader top priority from the entire engagement, a skate park was the number 1 feature desired by survey participants, with additional comments highlighting the need for a bigger, full-sized skatepark that accommodates people of all ages and skill levels and other activities like roller skating. This was followed by 10 votes for the multi-use sports courts, to respond to a need for activities for older children and teenagers. Aligning with the insights captured during the phase 1 engagement, a BMX Pump-track was also a popular choice amongst survey participants who identified the opportunity for this feature to accommodate a younger user base with road safety and rider learning features along the path.

Which sports and recreational opportunities do you think are suitable for the new space at Beaumont Hills?(Select up to 4)



What we heard during the Phase 1 Community Engagement:

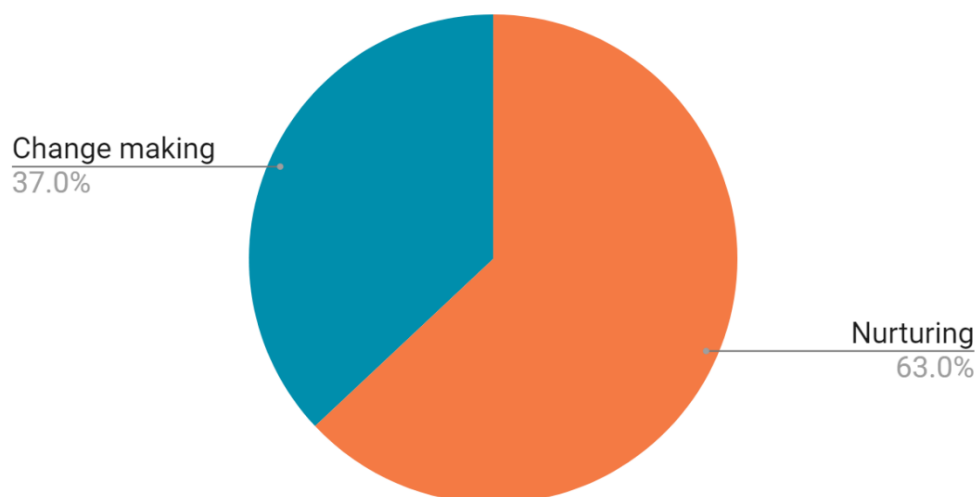
- Participants wished to see a park characterised by play, activity, and recreation
- A high-quality BMX pump track, skate park and multi-courts for organised sports games were desired park features.
- Priority was to provide a space that caters to the underserved youth sector and encourages intergenerational play in the one space
- Passive play and recreation with green spaces to explore with their dogs was something people wanted to see.

Feedback on public art

Participants were asked to indicate their preference between two public art themes which have been developed based on community inputs, historic research, and council policy.

The majority of participants (63%) nominated *'Nurturing: Artworks that foster positive relationships between people and place'*, while 37% of participants nominated *'Change making: Artworks that built new and alternative perspectives of people, place, and time.'* as a public art theme for the upgraded Park. This theme further aligns with engagement participant's vision for a space that predominantly accommodates youth in the area, and the important of fostering a sense of connection for this demographic.

Which of these themes are you most interested in us exploring?



Participants were also asked to select which examples of public art best reflect the type of art they would like to see in the Park.



While the varied in the materials used, the four most popular options selected by survey participants were large in scale and illustrated opportunities for play and interaction with the art work. Image four, selected by 77% of participants encompassed all the elements that were captured responses to other question in the survey, namely; play, interaction, water, and opportunities to socialise. It should be noted that the ability to “skate” this art work, may further align it with the number one priority captured in the phase two engagement (a skate park).

The second most popular option was the interactive sandstone blocks in image 3, which align with the community’s broader desire to see local culture and history told in a fun and interactive way in the space. Finally, images 2 (the basketball court) and image 5 (waste water) illustrate elements of play and water that engagement participants have expressed they would like to see during both the first and second round of engagement.

Issues and considerations

Participants raised the following issues and considerations for the design team to consider when finalising the Concept Design:

Need for a larger skatepark: Many participants (24%) indicated that The Hills area in general needs a larger and full-sized skatepark over a BMX track, noting that there are two other BMX facilities in the area that have recently undergone upgrades. Participants wanted to see a larger skatepark that could accommodate scooter, BMX, and roller skate users as well.

“there is already a BMX track at Castle Hill, I think it is a good idea for a track here but I think that the majority of the space should be used to build a proper and larger in scale skatepark, one that can help socialize kids and let them have fun. there are not many large skateparks in the hills and definitely none nearby.” – Online ideas wall participant

Amenities and accessibility: Several participants wanted to see more shaded seating around the parks, along with picnic areas under the trees for families to enjoy. Access to amenities like public toilets was also raised, as well as providing lighting at night so that the park can be accessed until late.

“If families are to spend time enjoying the various facilities in the park, toilets will need to be provided” - Online ideas wall participant

Case studies

Several participants referenced case studies for the design team to consider. These have been consolidated below:

- *Oran Park Skatepark – Oran Park*
- *Meadowbank Skatepark – Meadowbank Park, Meadowbank*
- *Glebe Skatepark – Federal Park Reserve, Glebe*
- *Skateparks and facilities designed by Convic.com*

Where to from here

The vision and draft Design Concept for the recreational space at Caddies Creek Sports Complex has been well received by participants. Through the course of community engagement, valuable feedback on the draft Concept Design was captured along with additional design ideas and elements for consideration as Place Laboratory develop a final Concept Design.

Next steps

The findings from this report will be used to inform the final plan for the new recreational space in Beaumont Hills. In 2022, an online information session will illustrate the key features of the plan and highlight how community input has helped shape the design.

“I think all feedback has been well taken into consideration and I am looking forward to the construction.”

- Online ideas wall participant

Appendix A – Online Survey Analysis

Overview

A total of 17 people participated in the survey.

Demographics

What gender do you identify with? (Q18)

56% of participants identified as female, and 44% identified as male.

What is your age? (Q14)

The largest age group among participants was 36-45 year olds (56%). This was followed by 19% of participants aged 56-65 and a further 13% aged 26-35. Two participants were under 25.

Where do you live? (insert suburb name or postcode) (Q15)

63% of participants live in locally in Beaumont Hills (2155). Two participants each lives in Kenthurst (2156), Kellyvale/ Kellyvale Ridge (2155) and one participant each in Norwest (2153) and Rouse Hill (2155).

Do you live within 10 minute's walk of the Park? (Q16)

75% of participants live within a 10 minute walk of the Park.

Do you identify as Aboriginal and/or Torres Strait Islander? (Q22)

No participants identified as Aboriginal or Torres Strait Islander. One person skipped the question.

Do you live with, or care for someone with a disability?? (Q23)

93% said they did not live or care for someone with a disability. One participant preferred not to say.

Do you speak a language other than English at home? Please specify (Q19 & Q20)

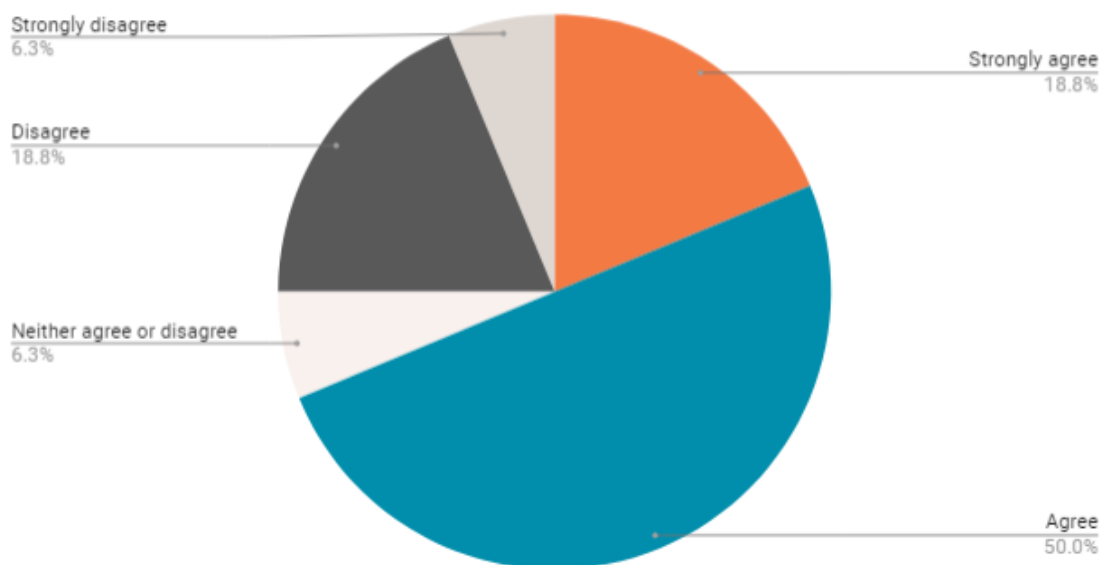
81% of participants do not speak a language other than English at home. Three participants indicated yes, one specifying

Community aspirations

Looking at the draft Concept Design for the upgrades to Caddies Creek Sports Complex, do you think we're on the right track? (Q2)

Eleven (69%) agreed or strongly agreed with this statement. Conversely, only four participants (25%) disagreed or strongly disagreed. One participant was undecided.

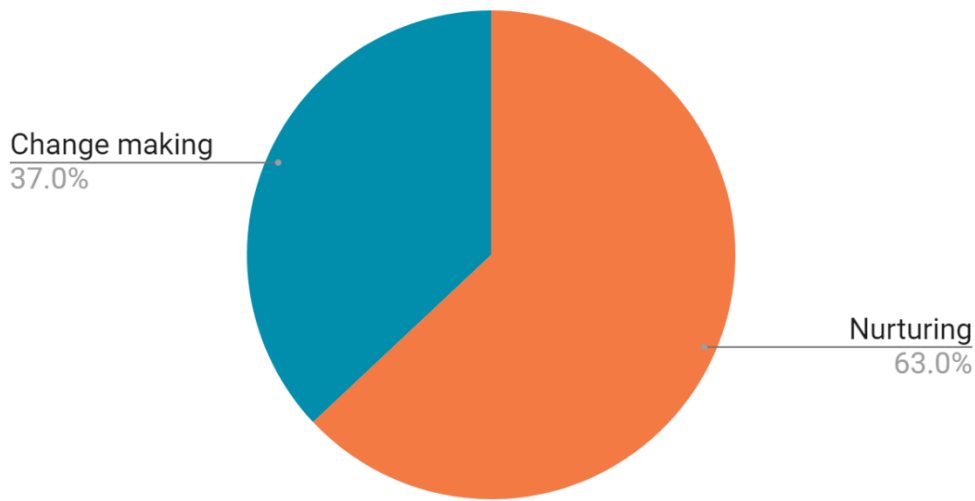
Looking at the draft Concept Design for the new recreational space do you think we're on the right track?



Public art themes have been developed for the new park at Beaumont Hills based on community input, historic research and Council policy. Which of these themes are you most interested in us exploring? (Q4)

The majority of participants (63%) nominated 'Nurturing: Artworks that foster positive relationships between people and place' and the remaining 37% of participants nominated 'Change making: Artworks that built new and alternative perspectives of people, place and time.' as a public art theme for the upgraded Park.

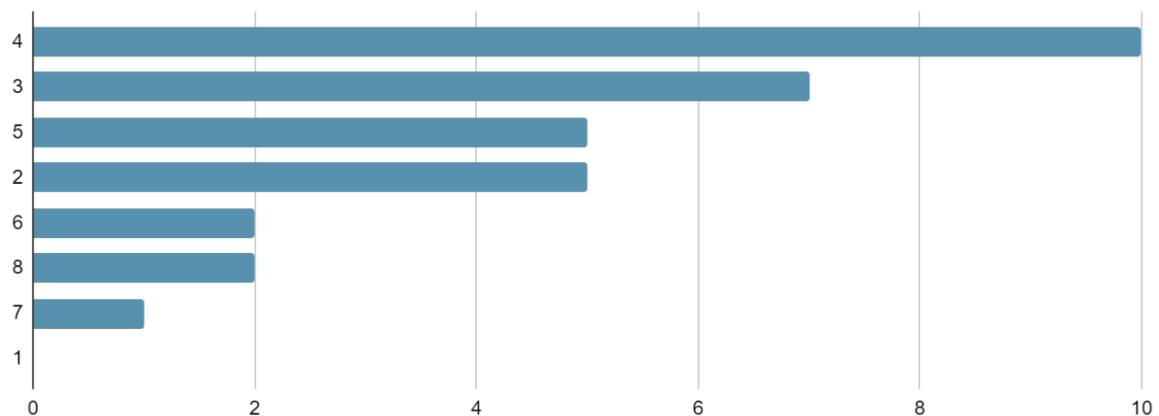
Which of these themes are you most interested in us exploring?



Public art comes in many different types, scales, and forms. Which of these examples reflect the type of art that excites you? (Q12)

Out of 13 votes, Image 4 was the most popular with ten votes, followed by Image 3 with 7. This was followed by Images 5 and 2 both receiving five votes each, and then Images 6 and 8 with two votes each. One person voted Image 7.

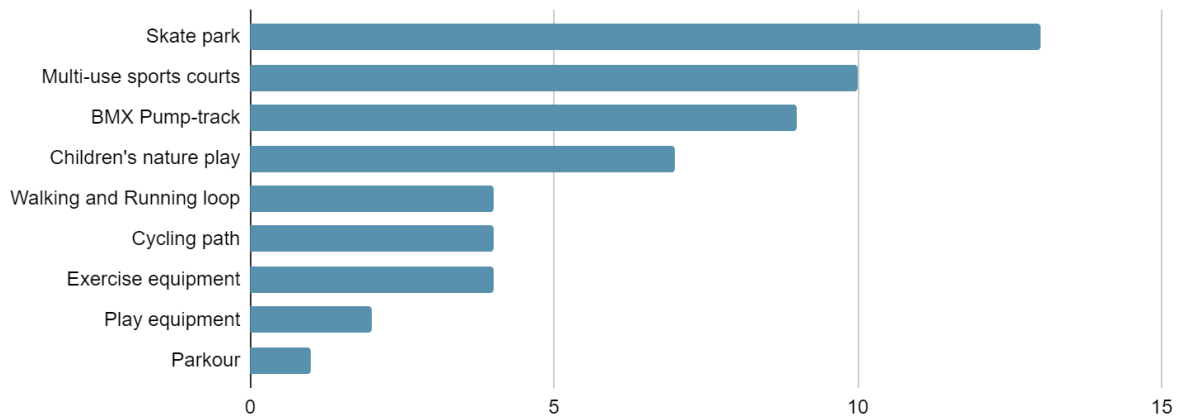
Public art comes in many different types, scales, and forms. Which of these examples reflect the type of art that excites you?



Which sports and recreational opportunities do you think are suitable for the new space at Beaumont Hills? (Select up to 4) (Q7)

The majority of participants nominated *Skate park* as a priority play element for the park, receiving a total of 13 votes. This was followed by *Multi-use sports courts* and *BMX Pump-track*. *Children's nature play* was also a priority with 7 votes.

Which sports and recreational opportunities do you think are suitable for the new space at Beaumont Hills?(Select up to 4)

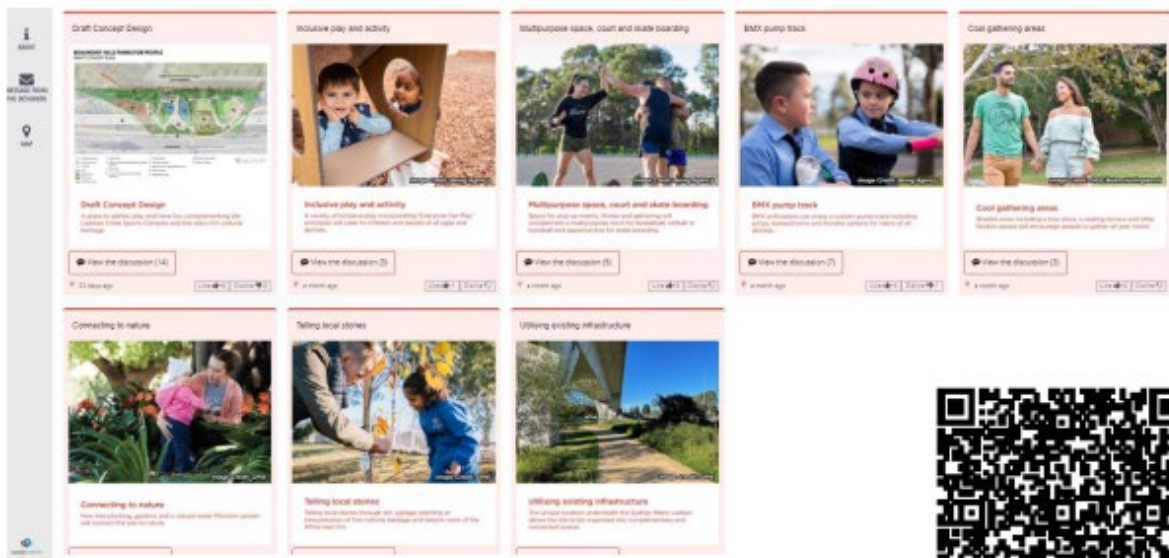


Appendix B – Social Pinpoint Design Board Analysis

Overview

A total of 42 responses were recorded on the Design Board:

- 14 'Draft Concept Design' comments
- 7 'BMX pump track' comments
- 5 'Multipurpose space, court and skate boarding' comments
- 4 'Connecting to nature' comments
- 4 'Utilising existing infrastructure' comments
- 3 'Cool gathering areas' comments
- 3 'Inclusive play and activity' comments
- 2 'Telling local stories' comments



Overall sentiment

Community members were extremely passionate in their responses on the Ideas wall. The majority of comments had a positive to neutral sentiment.

The following word cloud was created using the most common phrases on the Ideas wall, to convey the community's feedback for the design of the upgraded Park.



L4, Level 4/68-72 Wentworth Ave, Surry Hills NSW 2010

T +61 400 471 469 E john@jocconsulting.com.au

Follow Us

Facebook: [JOCConsulting](#)

Twitter: [JOCConsulting](#)

Instagram: [jocconsulting](#)

jocconsulting.com.au