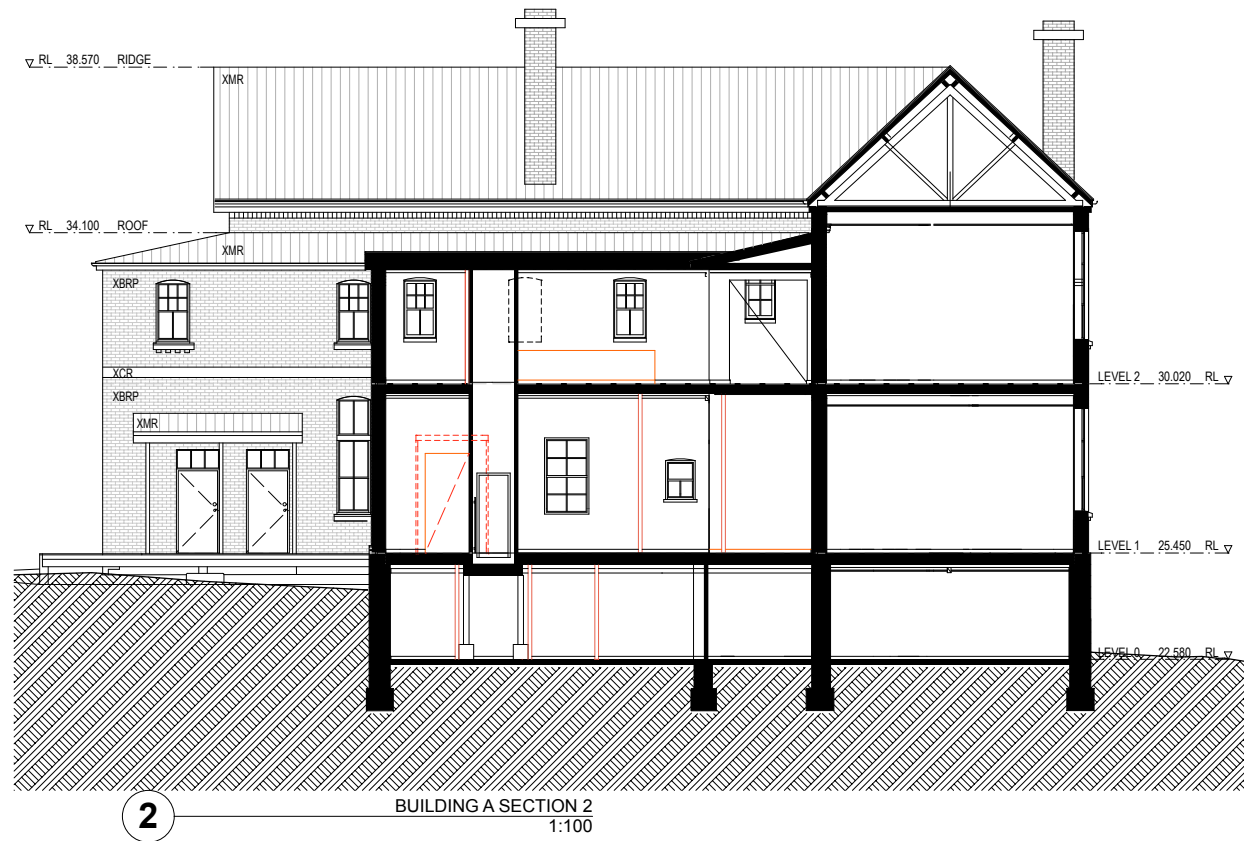


BUILDING A SECTION 1
1:100



BUILDING A SECTION 2
1:100



BUILDING A SECTION 3
1:100

Rev	Notes	Date
-	DA Issue	27.03.07

Acoustic Engineer
Renzo Tonin & Associates Pty Ltd
 Level 1, 418A Elizabeth St. Surry Hills NSW 2010
 P 9929 3321 F 9929 3327
 E mmeadows@skz.com.au

Services Engineer
Simpson Kotzman
 Level 4, 80 Mount Street, North Sydney NSW 2060
 P 9929 3321 F 9929 3327
 E mmeadows@skz.com.au

Disability Consultants
Accessibility Solutions
 467 Beauchamp Road, Maroubra NSW 2035
 P 9661 1945 F 9661 1982
 E markreil@bigpond.com.au

BCA Consultant
Blackett Maguire & Associates Pty Ltd
 Suite 2.01, 22-36 Mountain Street, Ultimo NSW 2007
 P 9211 1777 F 9211 7774
 E bjm@blackettmaguire.com.au

Land Surveyor
Lockley Land Title Solutions
 19 Massey Street, Gladesville NSW 2111
 P 9879 6077 F 9879 7143
 Damian Maguire

Environmental
Environmental & Earth Science EESI
 The Coal Loader Balls Head Drive
 Waverton NSW 2060
 P 9922 1777 F 9922 1010
 E jwalker@eesi.biz

Traffic Engineer
Transport and Traffic Planning Assoc
 Level 6, 282 Victoria Ave, Chatswood NSW 2057
 P 9411 5660 F 9904 6622
 E ttpa@tpa.com.au

Quantity Surveyor
Turner & Townsend Rawlinsons Pty Ltd
 Level 14, 55 Clarence Street, Sydney NSW 2000
 P 9279 2699 F 9279 2388
 E james.lumsden@turntown.com.au

Town Planning
MG Planning Pty Ltd
 Suite 11, 340 Darling Street, Balmain NSW 2041
 P 9555 7128 F 9555 6579
 E ngibson@mgplanning.com.au

Landscape Architect
360 Degrees
 Level 5 Ballarat House, 68-72 Wentworth Avenue
 Surry Hills NSW 2026
 P 9212 2204 F 9212 2256
 360@360.net.au

Structural/Civil Engineer
Simpson Design Associates
 Studio 1, 84 Mullens St Balmain NSW 2041
 P 9810 6911 F 9810 6922
 E andrew@simpsondesign.com.au

Project Manager
Incoll Management
 Level 1, 73 Miller Street, North Sydney NSW 2060
 P 9957 5818 F 9959 3975
 E npatton@incoll.com.au

Architect
Tonkin Zulaikha Greer
 117 Reservoir Street Surry Hills NSW 2010
 P 9215 4900 F 9215 4901
 E bettina@tzg.com.au

Client
Indigenous Land Corporation
 PO Box 15217, City East, Brisbane QLD 4002
 P 07 3854 4600 F 07 3854 4666
 E ashley.martens@ilc.gov.au

NOTES:
 DO NOT SCALE OFF DRAWINGS. USE FIGURED DIMENSIONS ONLY. REPORT ANY DISCREPANCIES TO THE ARCHITECT. THESE DESIGNS, PLANS, SPECIFICATIONS AND THE COPYRIGHT THEREIN ARE THE PROPERTY OF TONKIN ZULAIKHA GREER ARCHITECTS LTD AND MUST NOT BE USED, REPRODUCED OR COPIED WHOLLY OR IN PART WITHOUT WRITTEN PERMISSION OF TONKIN ZULAIKHA GREER ARCHITECTS.

Project Number: 0603

NATIONAL INDIGENOUS DEVELOPMENT CENTRE REDFERN

Drawing Title:

BUILDING A SECTIONS

Date printed: 27/03/07

Scale @ A1: Drawn by: BS, RM

Scale @ A3: Checked: PT

Phase: Drawing No: Revision:

DA **DA-104** -