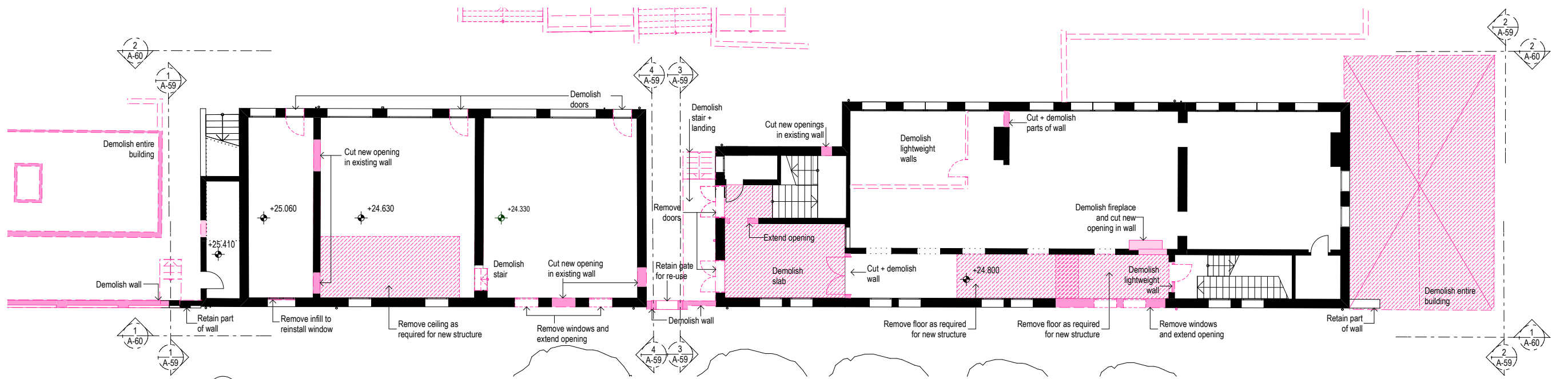
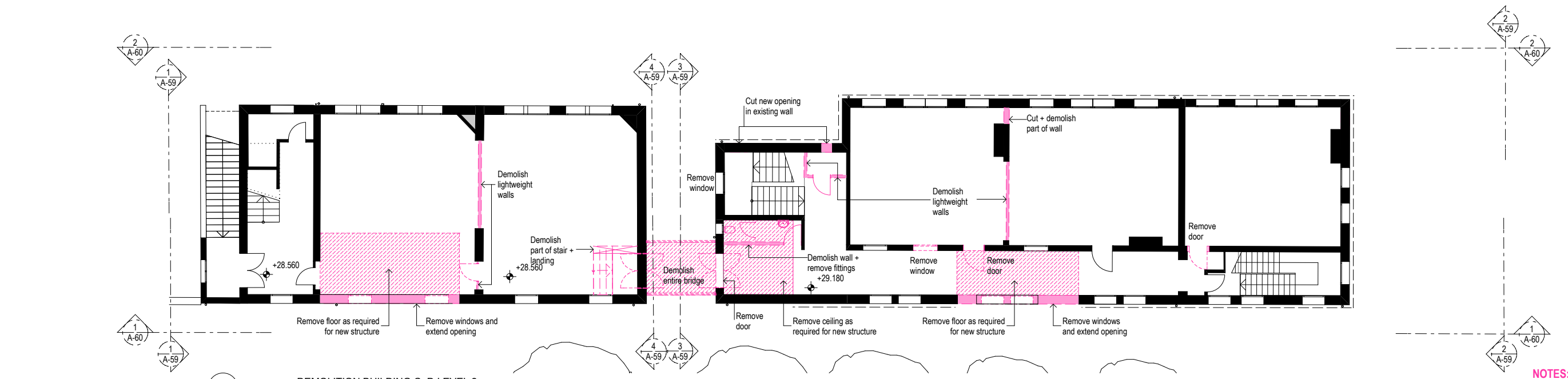


1 DEMOLITION BUILDING C+D LEVEL 0
1:100



2 DEMOLITION BUILDING C+D LEVEL 1
1:100



3 DEMOLITION BUILDING C+D LEVEL 2
1:100

NOTES:
REMOVE ALL SECURITY GRILLES AND BARS FROM DOORS AND WINDOWS.
ENSURE WATERPROOF BARRIER DURING DEMOLITION/CONSTRUCTION.
DEMOLISH TERMITE DAMAGED FLOORING + TIMBER STRUCTURE AS REQUIRED.

DA Issue	27.03.07
Rev	Notes
Acoustic Engineer Renzo Tonin & Associates Pty Ltd Level 1, 418A Elizabeth St, Surry Hills NSW 2010 P 8218 0500 F 8218 0501 E gwheatley@rtagroup.com.au	
Services Engineer Simpson Kotzman Level 4, 80 Mount Street, North Sydney NSW 2060 P 9929 3321 F 9929 3327 E mmeadows@skz.com.au	
Disability Consultants Accessibility Solutions 467 Beauchamp Road, Maroubra NSW 2035 P 9661 1945 F 9661 1982 E markreit@bigpond.com.au	
Principal Certifying Authority Blackett Maguire & Associates Pty Ltd Suite 2.01, 22-36 Mountain Street, Ultimo NSW 2007 P 9211 1777 F 9211 7774 E bjm@blackettmaguire.com.au	
Land Surveyor Lockley Land Title Solutions 19 Massey Street, Gladesville NSW 2111 P 9879 6077 F 9879 7143 E damian@lts.com.au	
Environmental Environmental & Earth Science EESI The Coal Loader Balls Head Drive Waverton NSW 2060 P 9922 1777 F 9922 1010 E jwalker@eesi.biz	
Traffic Engineer Transport and Traffic Planning Assoc Level 6, 282 Victoria Ave, Chatswood NSW 2057 P 9411 5660 F 9904 6622 E ttpa@tppa.com.au	
Quantity Surveyor Turner & Townsend Rawlinsons Pty Ltd Level 14, 55 Clarence Street, Sydney NSW 2000 P 9279 2699 F 9279 2388 E james.lumsden@turntown.com.au	
Town Planning MG Planning Pty Ltd Suite 11, 340 Darling Street, Balmain NSW 2041 P 9555 7128 F 9555 6579 E ngibson@mgplanning.com.au	
Landscape Architect 360 Degrees Level 5 Ballarat House, 68-72 Wentworth Avenue Surry Hills NSW 2026 P 9212 2204 F 9212 2256 360@360.net.au	
Structural/Civil Engineer Simpson Design Associates Studio 1, 84 Mullens St Balmain NSW 2041 P 9810 6911 F 9810 6922 E andrew@simpsondesign.com.au	
Project Manager Incoll Management Level 1, 73 Miller Street, North Sydney NSW 2060 P 9957 5818 F 9959 3975 E npatton@incoll.com.au	
Architect Tonkin Zulaikha Greer 117 Reservoir Street Surry Hills NSW 2010 P 9215 4900 F 9215 4901 E bettina@tzg.com.au	
Client Indigenous Land Corporation PO Box 15217, City East, Brisbane QLD 4002 P 07 3854 4600 F 07 3854 4666 E ashley.martens@ilc.gov.au	
<p>NOTES: DO NOT SCALE OFF DRAWINGS. USE FIGURED DIMENSIONS ONLY. REPORT ANY DISCREPANCIES TO THE ARCHITECT. THESE DESIGNS, PLANS, SPECIFICATIONS AND THE COPYRIGHT THEREIN ARE THE PROPERTY OF TONKIN ZULAIKHA GREER ARCHITECTS LTD AND MUST NOT BE USED, REPRODUCED OR COPIED WHOLLY OR IN PART WITHOUT WRITTEN PERMISSION OF TONKIN ZULAIKHA GREER ARCHITECTS.</p>	
<p>NORTH</p>	
Project Number: 0603	
<p>NATIONAL INDIGENOUS DEVELOPMENT CENTRE REDFERN</p>	
Drawing Title:	
<p>DEMOLITION BUILDING C+D LEVEL 0-2</p>	
Date printed:	27/03/07
Scale @ A1: 1:100	Drawn by: BS, RM
Scale @ A3: 1:200	Checked: PT
Phase:	Drawing No:
DA	DA-57
	Revision: