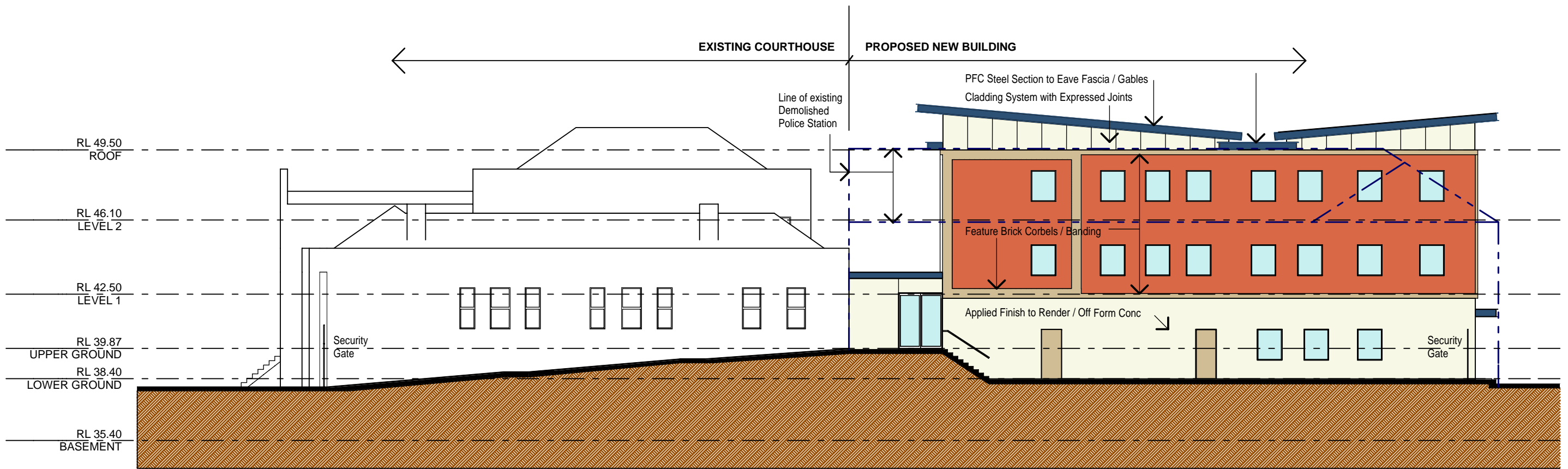


**EXTERNAL FINISHES**

Basement and Ground Floor - applied finish over off-form concrete / rendered masonry  
 Levels 1 and 2 - face brick finish with feature brick corbels/banding  
 From Level 2 ceiling level to the underside of the roof sheeting - painted external panel system with expressed vertical joints .  
 Sheet metal roof sheeting with half round gutters and round downpipes in colorbond finish. Painted PFC steel section to fascia and gables of eaves overhangs.  
 Windows - aluminium framed with selected powdercoat finish and single glazed with solar tinted fixed glass panels.  
 Wall drenchers will be provided over all windows / doors to the East and West facades of the Courthouse and the East, West and Southern facades of the new building to meet the requirements of the Building Code of Australia.  
 Sun Screens to future detail to be provided to North, East and West facades - not shown for clarity.

**SOUTH ELEVATION**



**WEST ELEVATION**

**REDFERN COMMUNITY HEALTH CENTRE**