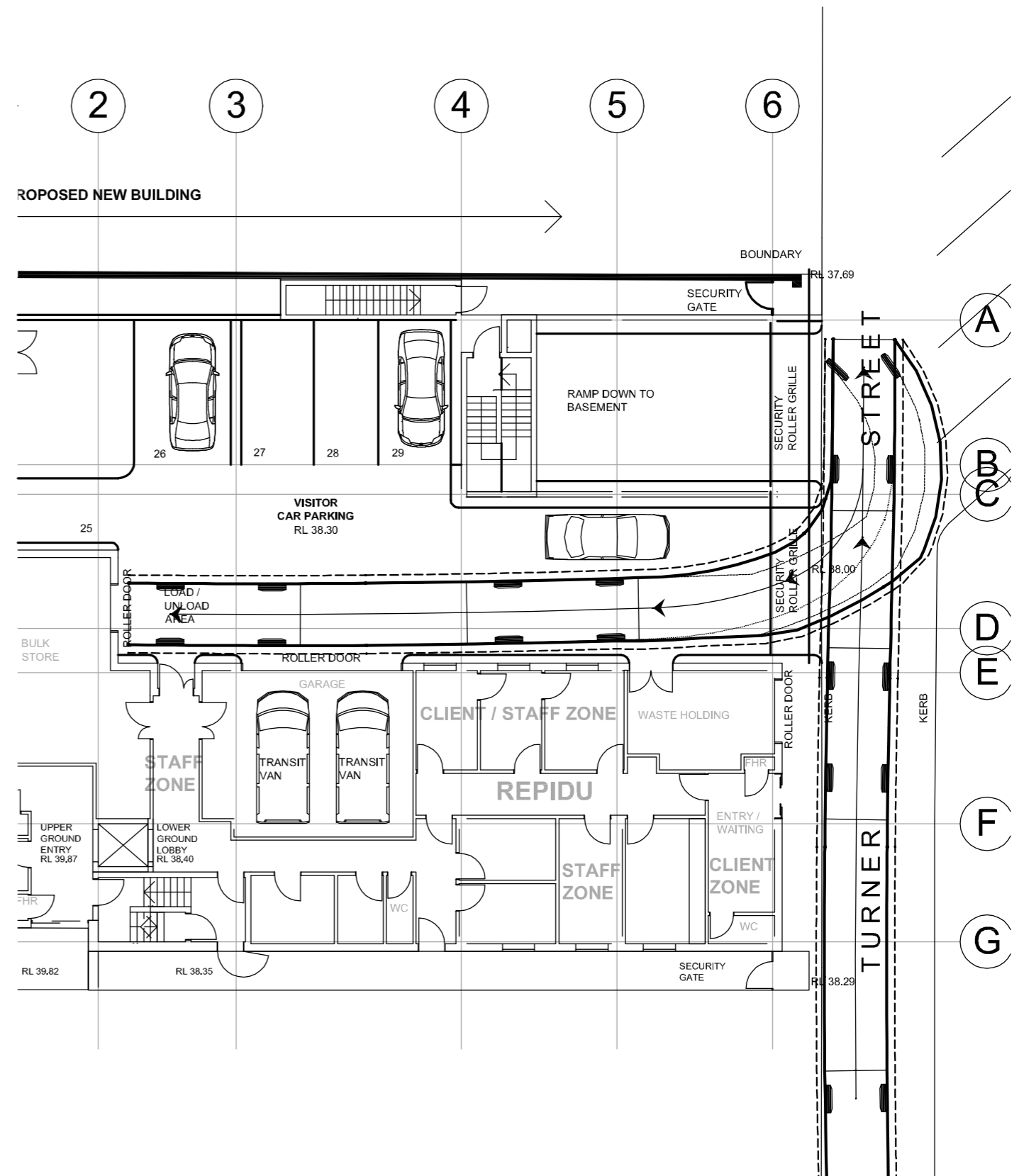


EXITING CARPARK
SCALE 1: 200



ENTERING CARPARK
SCALE 1: 200

File Name: RCHC_DA_102_K_Ground.dwg -- USER: tomyb -- Plot File Created: Dec 20, 2007 -- 11:07am

| | | | |
|---------------------------|-------------------------------------|-----|------------|
| A3 0 1 2 3 4 5 6 7 8 9 10 | | | |
| Architect | RICHARD HUDSON CONSULTING PTY LTD | | |
| | 1 FLINDERS PLACE, MT COLAH NSW 2079 | | |
| P1 PRELIMINARY | KT | TB | 20.12.07 |
| Rev | Description | Eng | Draft Date |

TaylorThomsonWhitting
Consulting Engineers
48 Chandos Street St.Leonards NSW 2065
T: +61 2 9439 7268 F: +61 2 9439 3146 ttwsyd@ttw.com.au
Taylor Thomson Whitting (NSW) Pty Ltd A.C.N. 113 578 377

Project
REFERN COMMUNITY HEALTH CENTRE

Sheet Subject
6.4m SRV TURNING PATH OPTION B

| | | |
|---|---------------|------------|
| Scale A3 | Drawn | Authorised |
| 1:200 | TB | KT |
| Job No | Drawing No | Revision |
| | SKC01B | P1 |
| Plot File Created: Dec 20, 2007 - 11:07am | | |