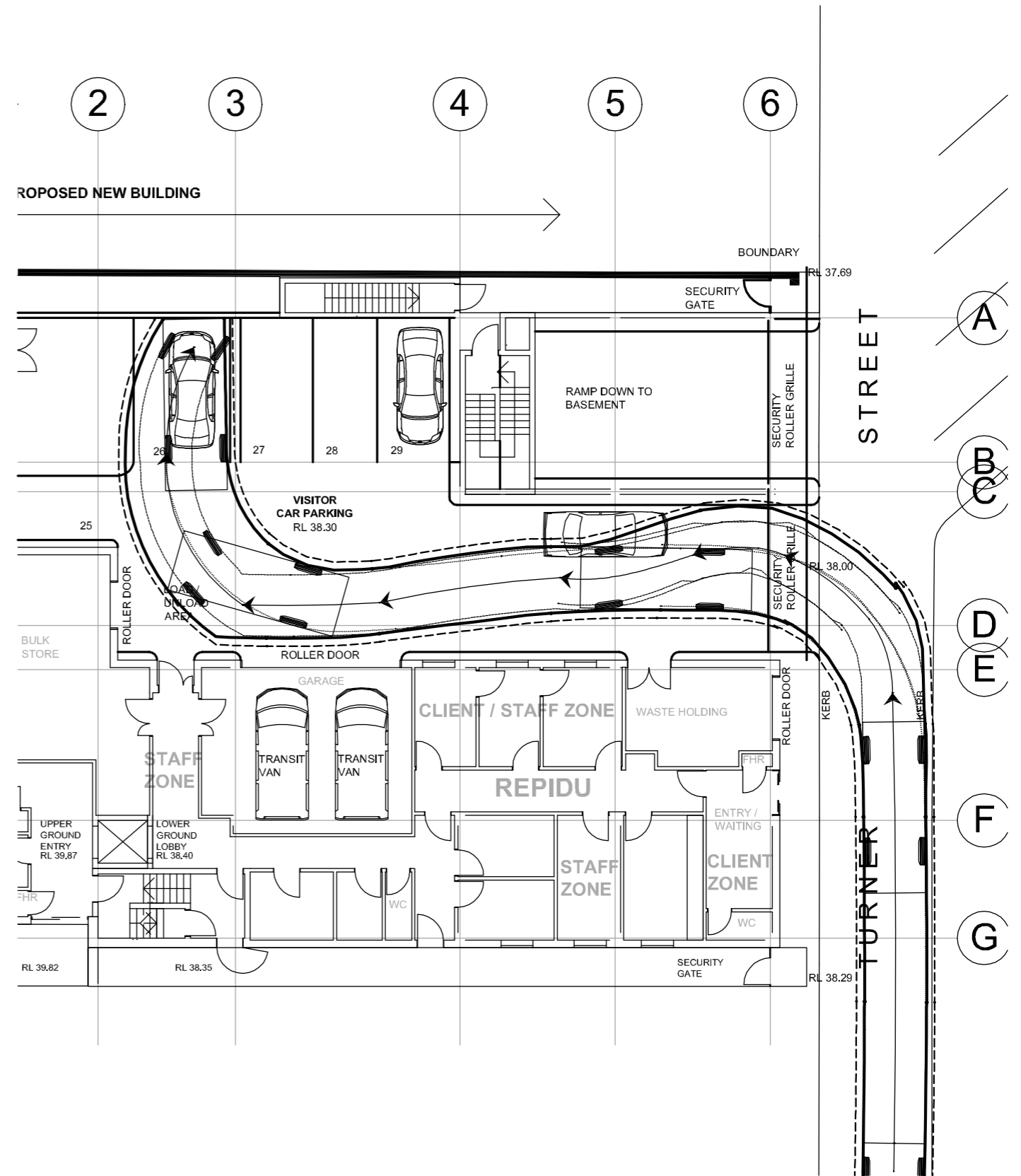


**EXITING CARPARK**  
SCALE 1: 200



**ENTERING CARPARK**  
SCALE 1: 200

File Name: RCHC\_DA\_102\_K\_Ground.dwg -- USER: tomyb -- Plot File Created: Dec 20, 2007 - 11:08am

A3 0 1 2 3 4 5 6 7 8 9 10			
Architect	RICHARD HUDSON CONSULTING PTY LTD		
	1 FLINDERS PLACE, MT COLAH NSW 2079		
P1 PRELIMINARY	KT	TB	20.12.07
Rev	Description	Eng	Draft Date

**TaylorThomsonWhitting**  
Consulting Engineers  
48 Chandos Street St. Leonards NSW 2065  
T: +61 2 9439 7268 F: +61 2 9439 3146 [ttwsyd@ttw.com.au](mailto:ttwsyd@ttw.com.au)  
Taylor Thomson Whitting (NSW) Pty Ltd A.C.N. 113 578 377

Project  
**REFERN COMMUNITY HEALTH CENTRE**

Sheet Subject  
**6.4m SRV TURNING PATH OPTION A**

Scale A3 1:200	Drawn TB	Authorised KT
Job No	Drawing No <b>SKC01A</b>	Revision <b>P1</b>
Plot File Created: Dec 20, 2007 - 11:08am		