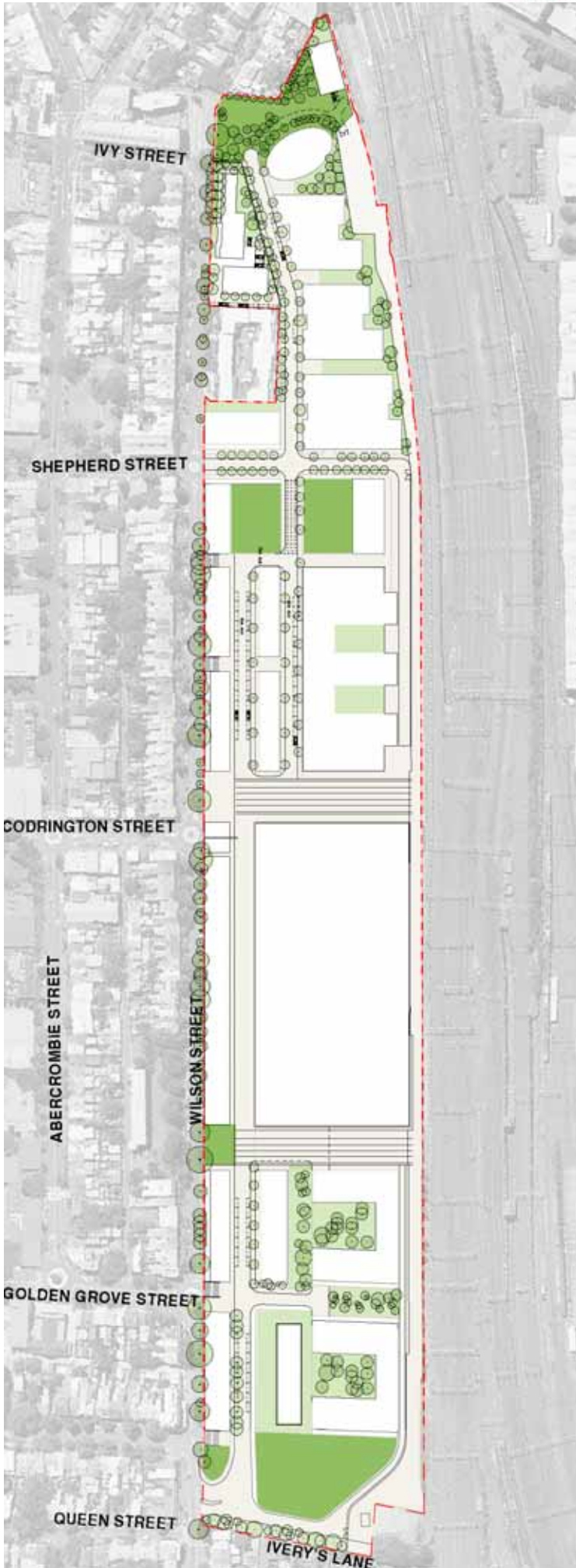




Open Space Plan
Scale 1:2500







Legend

-  Public Parks
-  Private Open Space

Parks and Public Domain Plan
Scale 1:2500



Legend

	Approximate
 Public parks to be dedicated	9,401sqm
 Roads to be dedicated	12,284sqm
 Public domain to be dedicated	744sqm
 Other public domain	5,807sqm
Total Public Parks	9,401sqm
Total Public Domain	6,551sqm
Total Public Parks & Public Domain	15,952sqm (15% of site area)

Land Use Plan
Eastern Site
Scale 1:1250



Legend

- Residential
- Office/ Retail
- Heritage - adaptive reuse
- Public Open Space

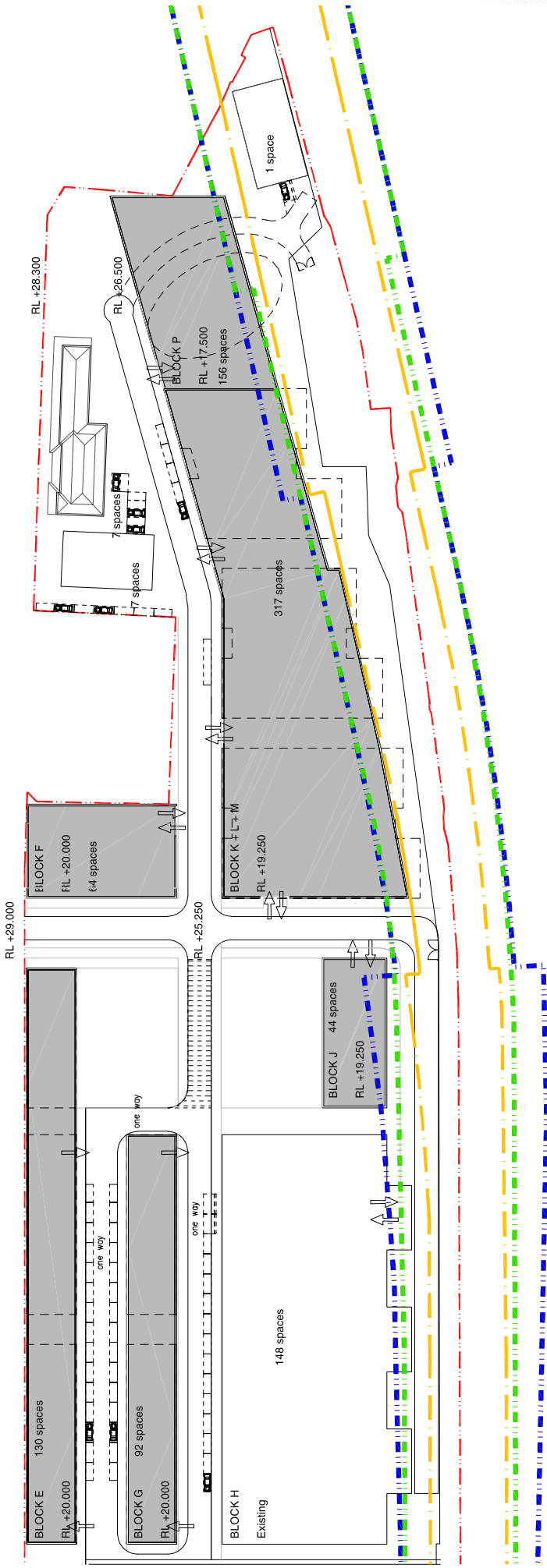
Land Use Plan
Central and Western Sites
Scale 1:1250







Legend

- Residential
- Office/ Retail
- Heritage - adaptive reuse
- Public Open Space

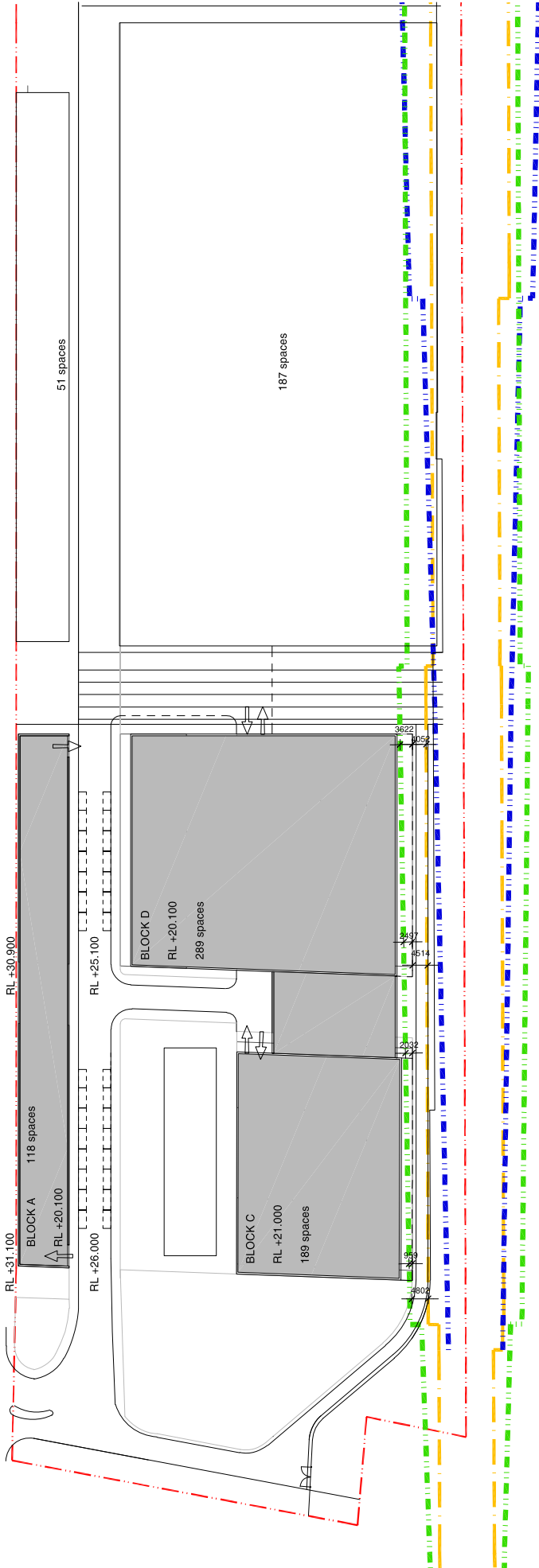
**Indicative Parking Provision
Eastern Site
Scale 1:1250**



Future Railcorp Infrastructure

-  Exclusion Zone
Foundations/Structures not permitted
-  Zone which may be intersected by discrete foundations eg. piles but within which foundations/structures may not bear and shall be transferred to below the zone. Any basement slabs or 'on ground' slabs must be suspended and any loads thereof transferred to below the zone.
-  Zone which may be intersected by discrete or continuous foundations/structures but within which foundations/structures may not bear and shall be transferred to below zone.
-  Site Boundary

**Indicative Parking Provision
Central and Western Sites
Scale 1:1250**



Future Railcorp Infrastructure

- - - Exclusion Zone
Foundations/Structures not permitted
- - - Zone which may be intersected by discrete foundations eg. piles but within which foundations/structures may not bear and shall be transferred to below the zone. Any basement slabs or 'on ground' slabs must be suspended and any loads thereof transferred to below the zone.
- - - Zone which may be intersected by discrete or continuous foundations/structures but within which foundations/structures may not bear and shall be transferred to below zone.
- - - Site Boundary

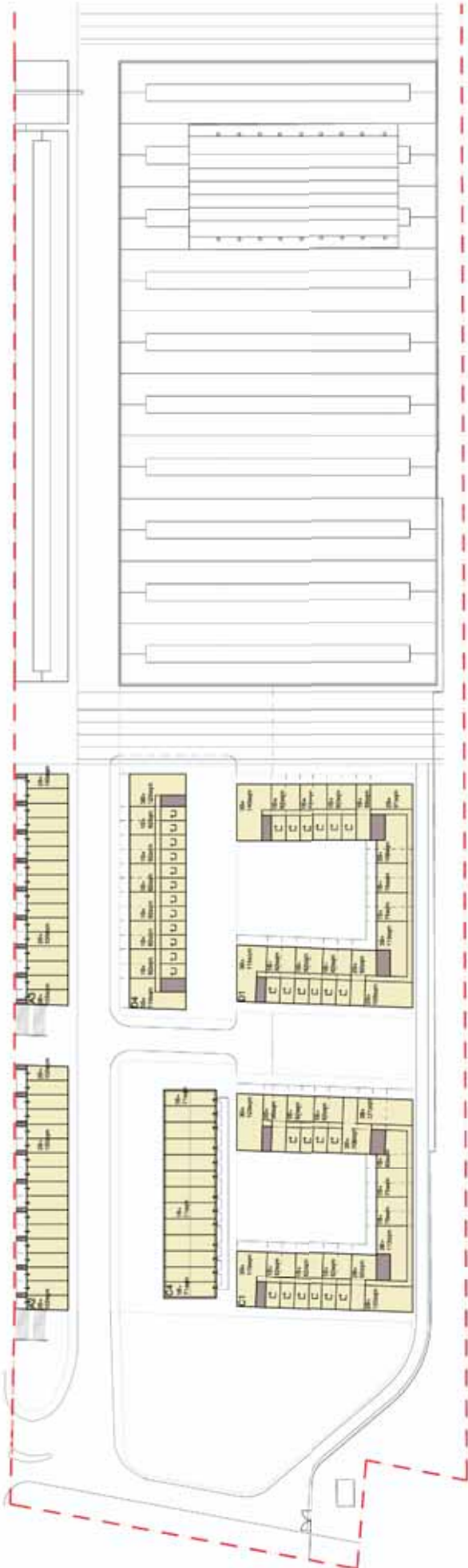
Ground Floor Plan
Eastern Site
Scale 1:1250

Indicative Apartment Layouts
(Not for approval)



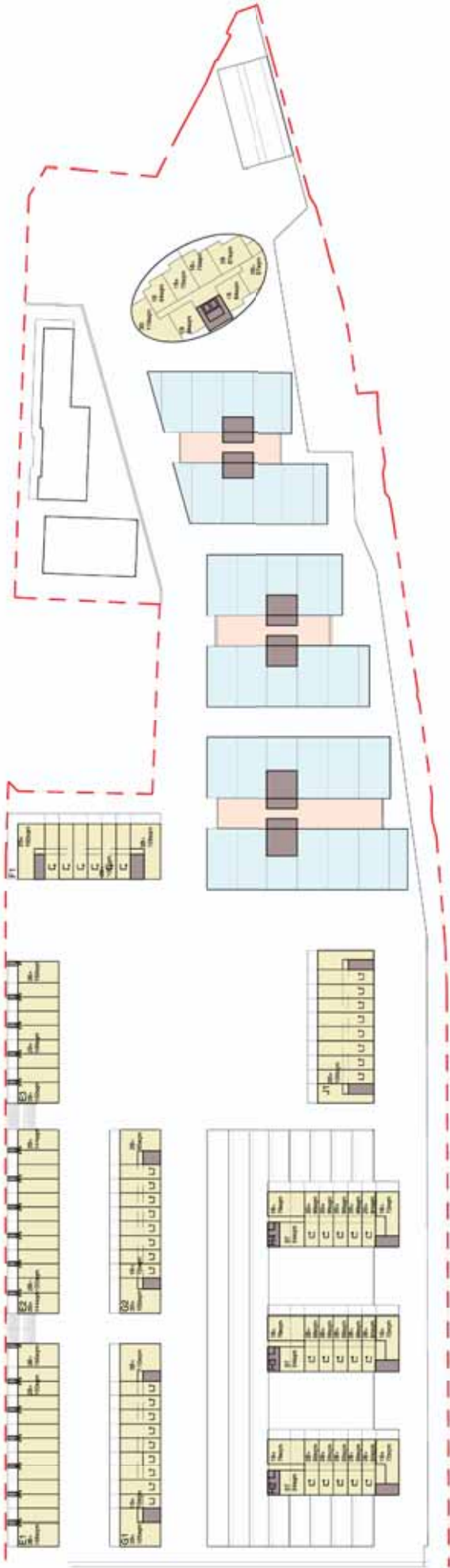
**Ground Floor Plan
Central and Western Sites
Scale 1:1250**

**Indicative Apartment Layouts
(Not for approval)**



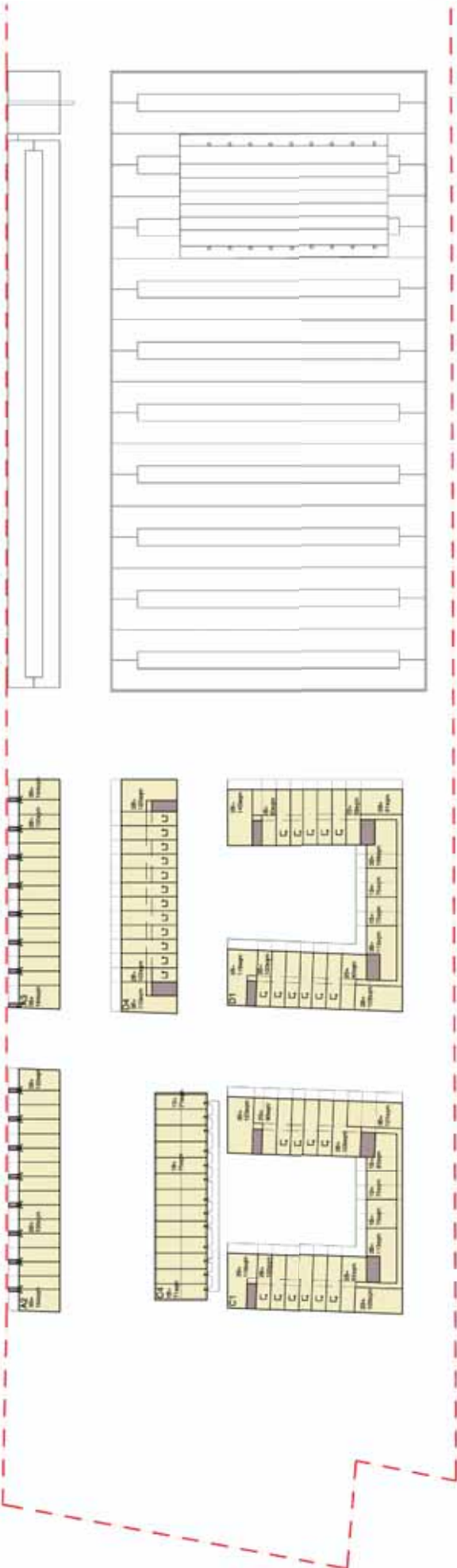
Typical Upper Floor Plan
Eastern Site
Scale 1:1250

Indicative Apartment Layouts
(Not for approval)

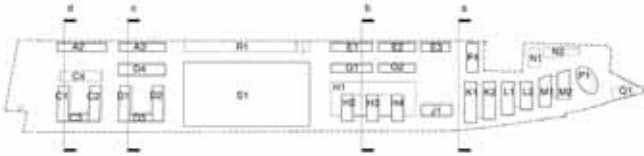


**Typical Upper Floor Plan
Central and Western Sites
Scale 1:1250**

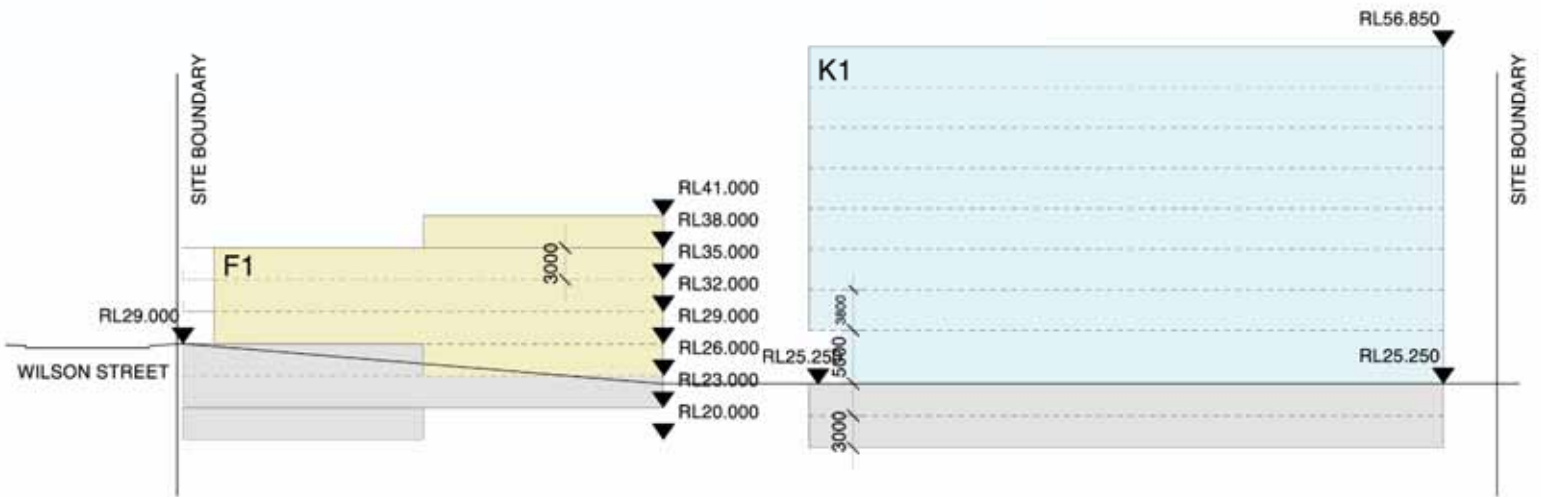
**Indicative Apartment Layouts
(Not for approval)**



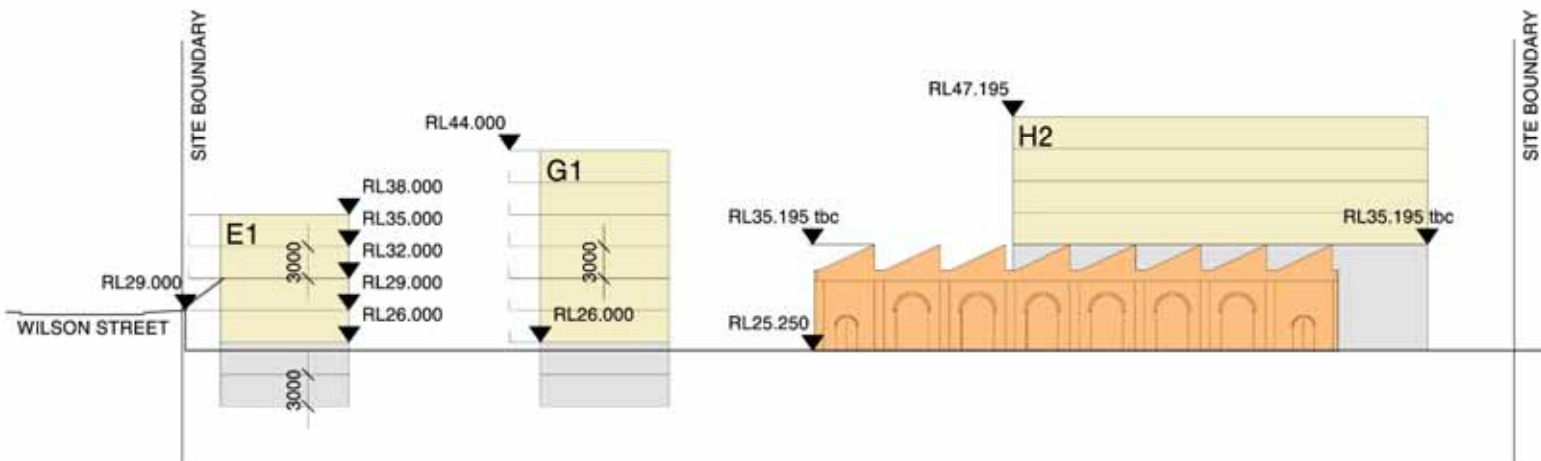
Eastern Site Sections
Scale 1:500



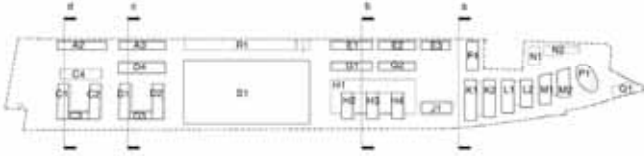
Section a



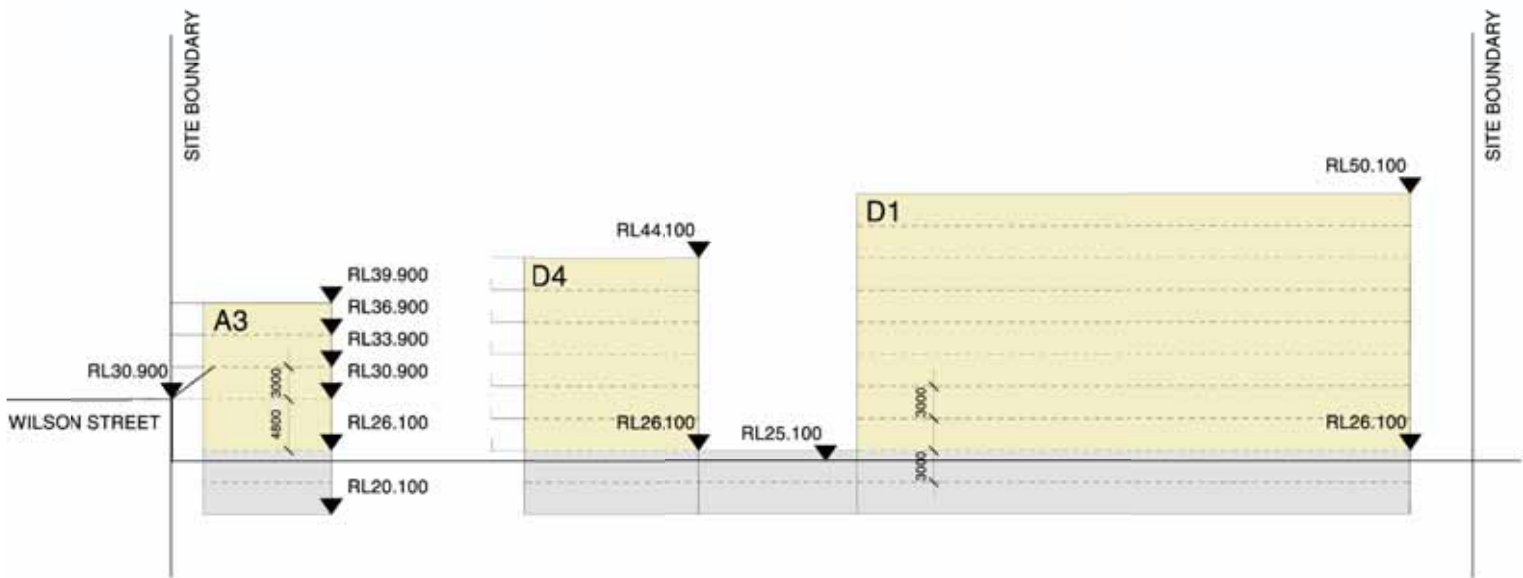
Section b



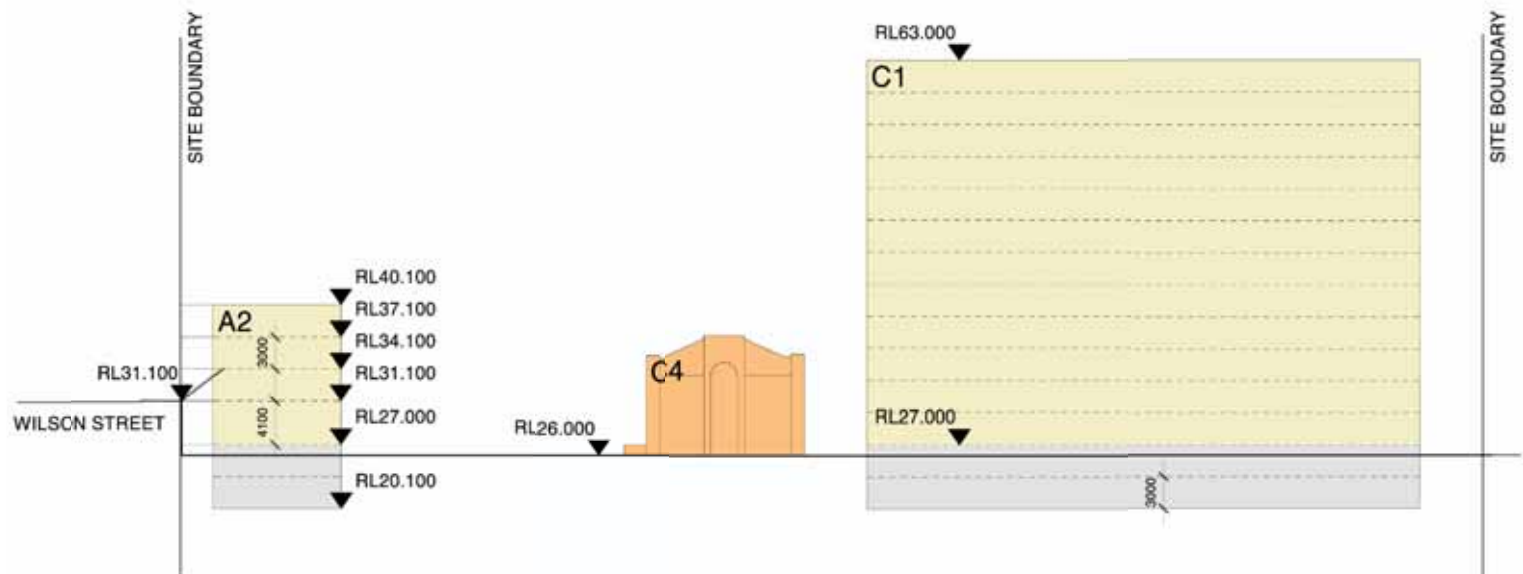
Western Site Sections
Scale 1:500



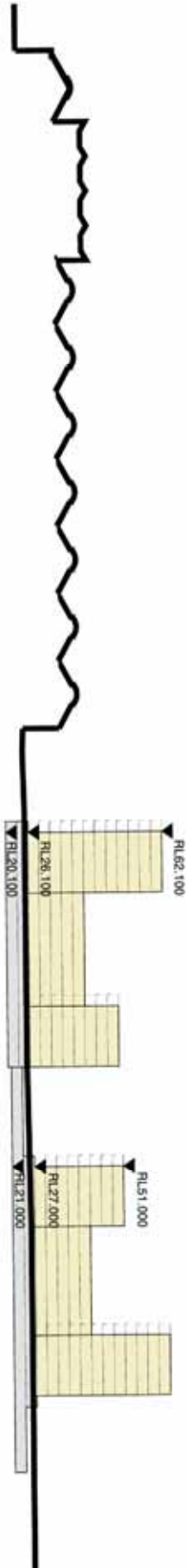
Section c



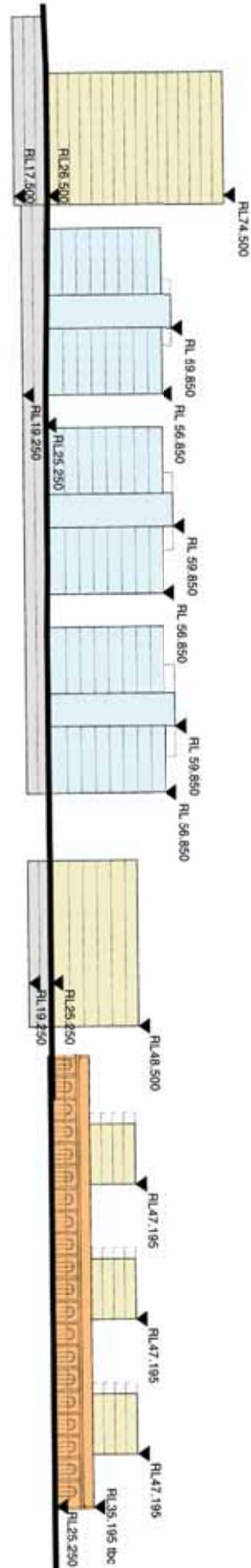
Section d



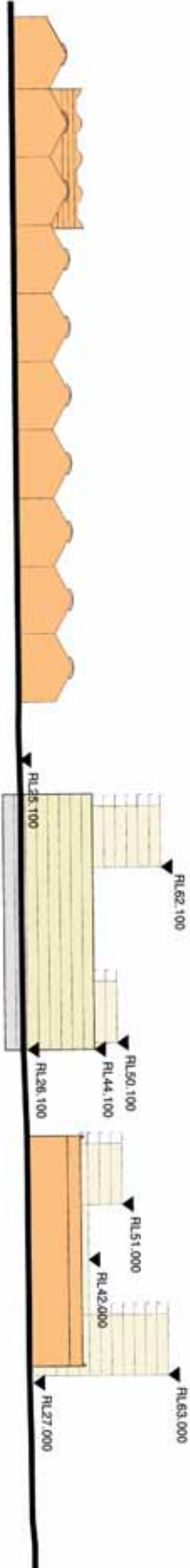
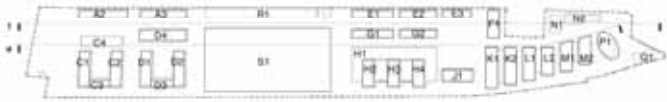
Longitudinal Sections
Scale 1:1250



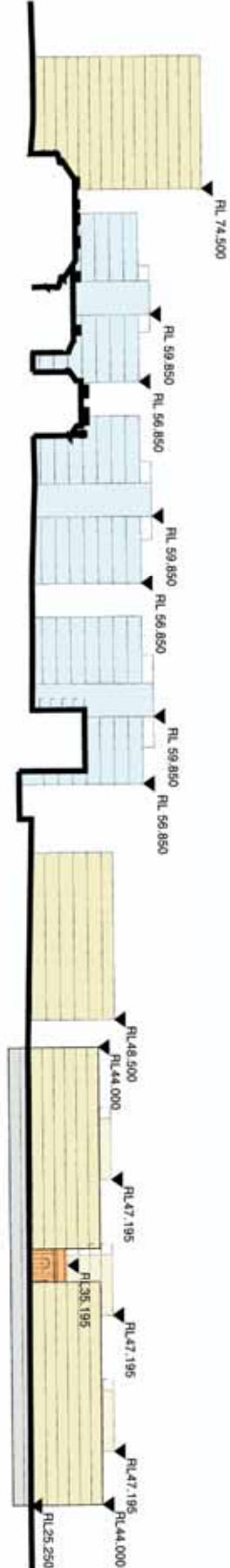
Section e



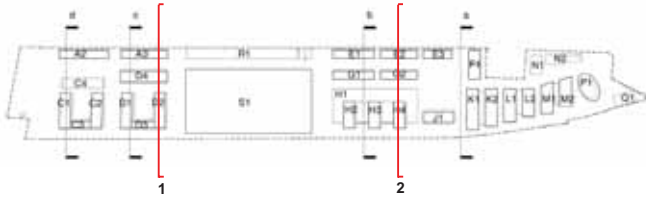
Longitudinal Sections
Scale 1:1250



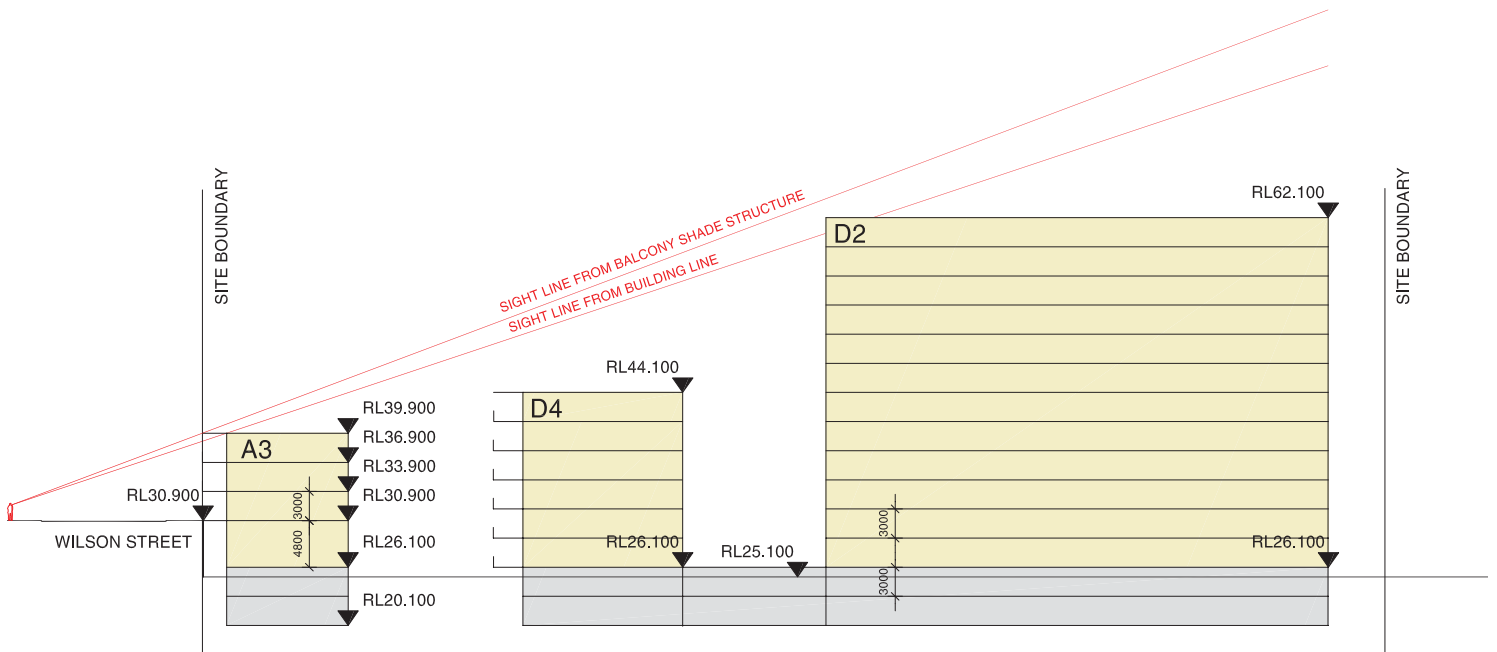
Section f



**Site Sections -
Sight Lines from Wilson Street**
Scale NTS



Section 1



Section 2

