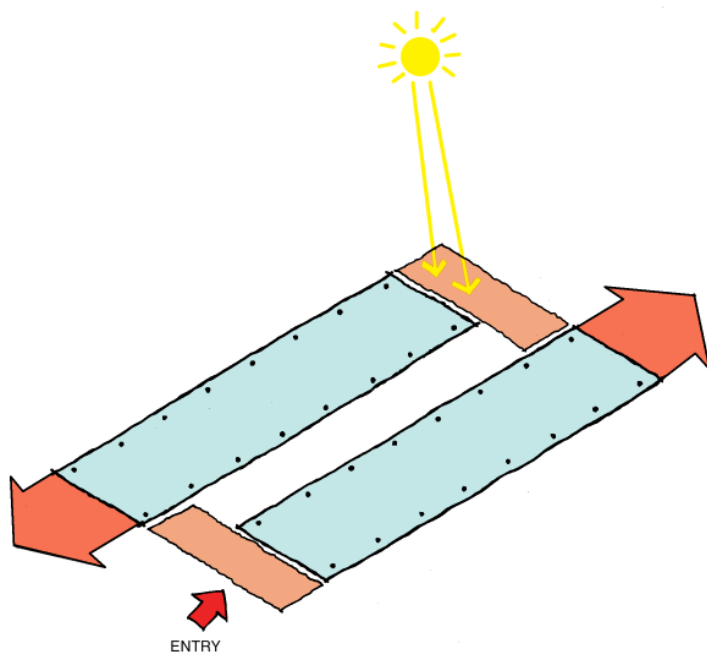


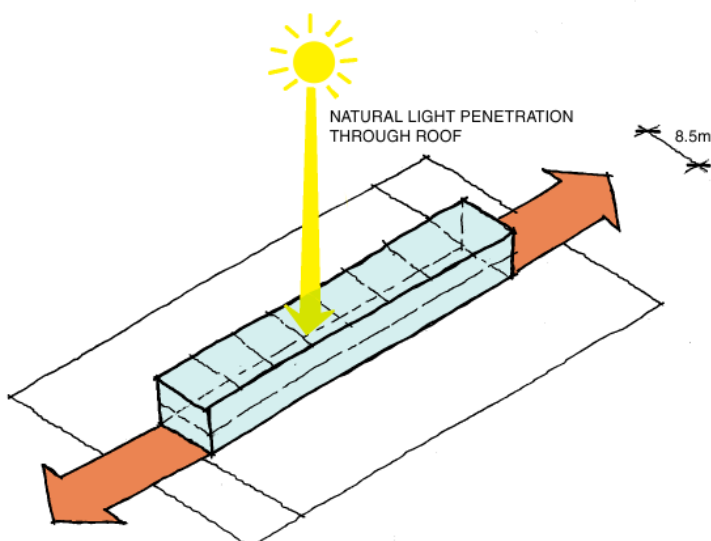
4.1 Flexible Floor Plates

The objective is to create a large open floor plate that maximises flexibility and encourages interaction. To ensure that all office space has excellent access to natural light each floor has been split into two 18m wide linear floor plates of 1240m² each. The workspace is column free allowing full internal flexibility with a single row of columns set back from the internal edge of the floor plates providing a clearly defined circulation route.



4.2 Staggered Floor Plates

Two equally sized floor plates are staggered in an east-west direction to define an entry forecourt to the south west and an outdoor recreation deck to the north east with good solar access.



4.3 Linear Street

The staggered floor plates are separated by a 8.5m wide two storey high internal 'street'. This space is top lit to maintain natural light to the adjoining office space and defines the buildings social hub and communal space.