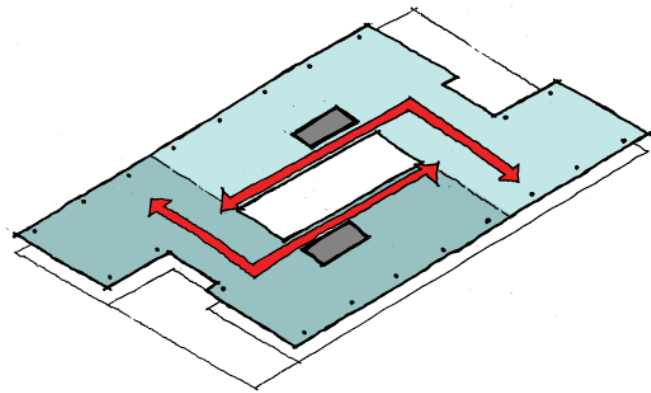


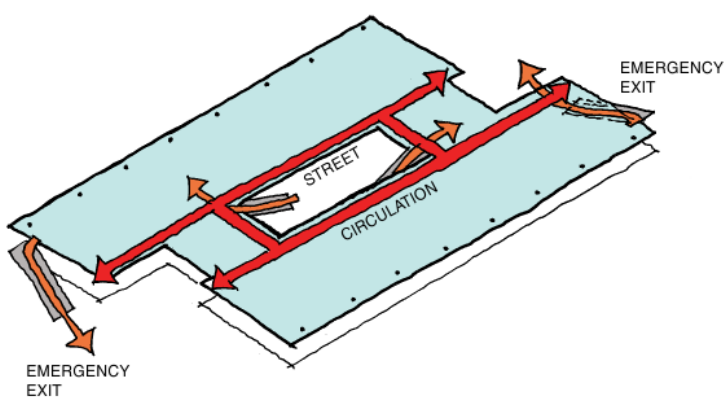
#### 4.4 Linked Floor Plate

The Level 1 floor plate is linked on the eastern and western ends of the street by a 14m wide bridge that results in a 2740m<sup>2</sup> contiguous office space.



#### 4.5 Service Cores

A service core accommodating toilets and service risers is located on each linear floor plate at alternate ends of the building to reduce service runs and ensure that all tenants are in close proximity to amenities.



#### 4.6 Circulation

Generously proportioned linear circulation routes are located at the edge of the floor plate overlooking the two storey high communal street. Vertical circulation is located within the 'street' space and consists of two open stairs located on either end of the two storey high space with a single glazed lift providing disabled access. Two external open fire stairs are located at either end of the building for emergency escape.