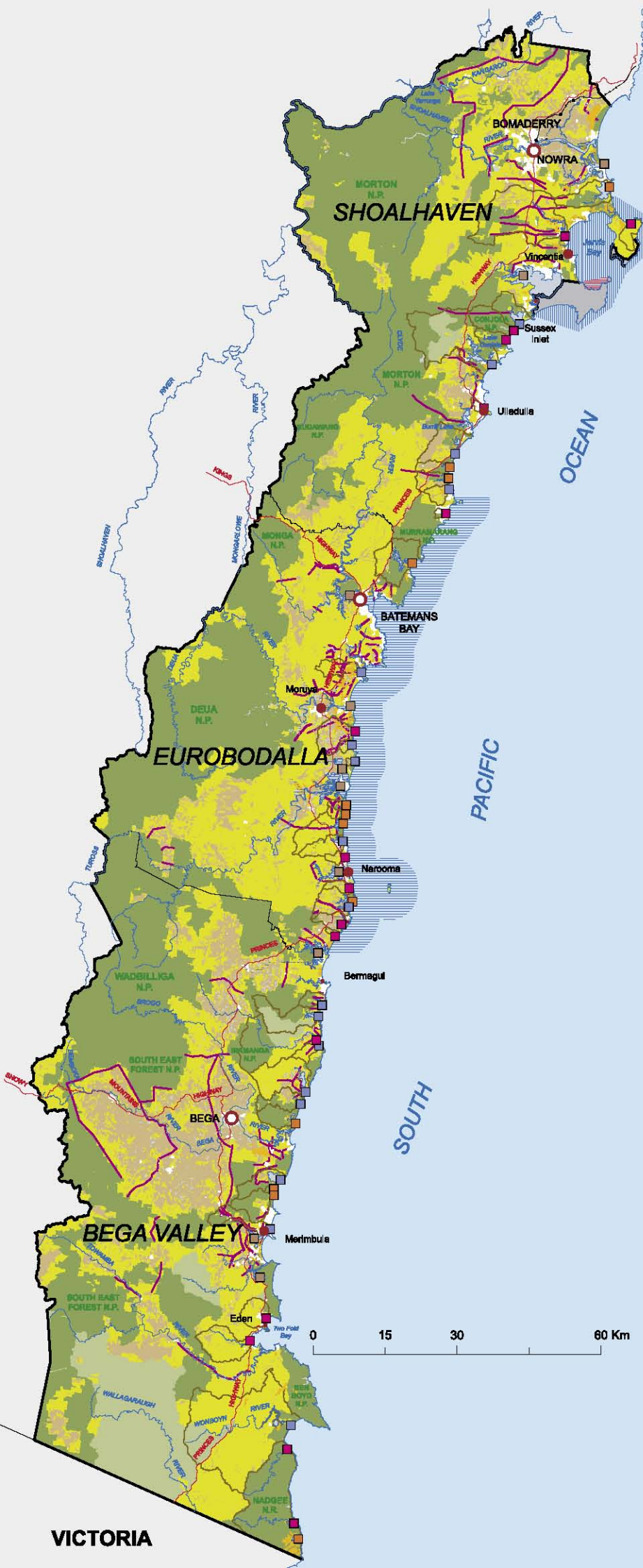


## MAP 2 BIODIVERSITY AND COASTAL ASSETS



### Map Legend

- Major Regional Centre
  - Major Town
  - Town
  - Rail Network and Station
  - Highway
  - River and Creek
  - Local Government Area
  - South Coast Regional Strategy Boundary
  - Existing Urban Area
  - Commonwealth Territory
  - Water Body
  - Ocean
  - National Park Estate
  - State Forest
  - Biodiversity Assets Outside Conservation Reserves
    - EEC or other vegetation of high conservation value
    - Old Growth Forest
    - Threatened flora habitat \*
    - Threatened fauna habitat \*
    - Extant vegetation of Landscape >70% cleared
  - Indicative Habitat Corridor
  - Rural Land and Environmental Asset
- Healthy Rivers Commission (HRC) Classification of Coastal Lakes**
- Comprehensive Protection
  - Significant Protection
- DNR Vulnerability Assessment of Coastal Lakes and Estuaries**
- Highly Vulnerable Estuary
  - Catchment boundary for HRC Coastal Lake and Vulnerable Estuary
  - Other Waterbodies with Significant Aquatic Habitat identified by DPI
- State Environmental Planning Policy 14**
- Coastal Wetland
- Marine Parks**
- Jervis Bay Marine Park
  - Batemans Marine Park
  - Commonwealth Marine Protected Area

Note: This map can viewed at a larger size on the Department of Planning website at: [www.planning.nsw.gov.au/southcoast](http://www.planning.nsw.gov.au/southcoast)