

# Riverina-Murray Implementation of Final Plan

Fact Sheet #9



April 2016

## Planning for the Riverina-Murray

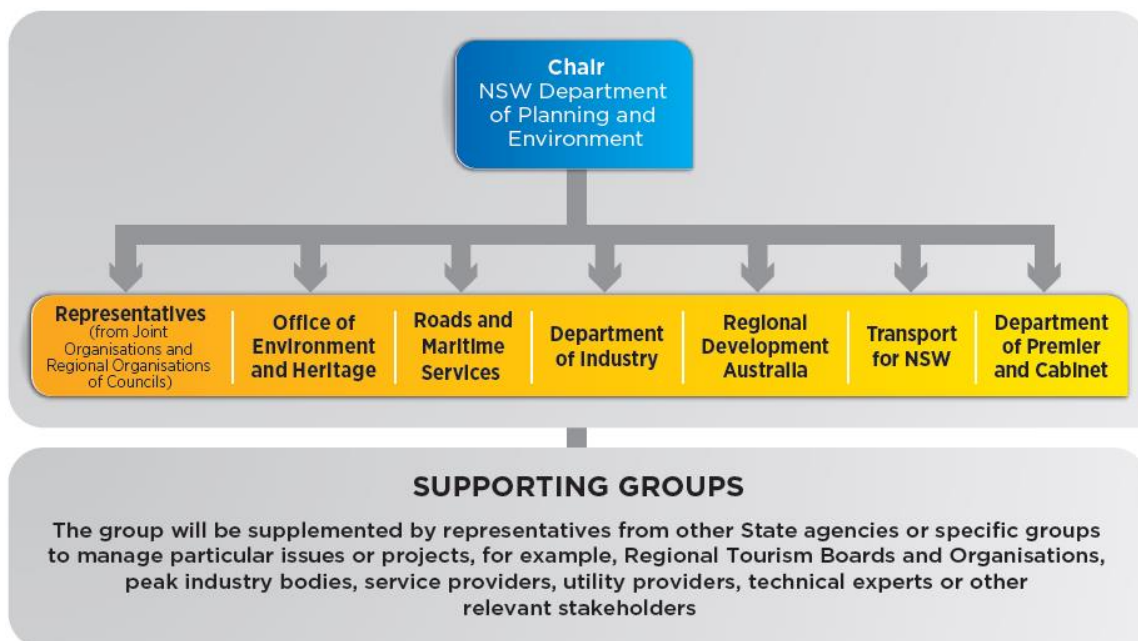
The NSW Government has released the draft Riverina-Murray Regional Plan (draft Plan) to guide sustainable growth in the region over the next 20 years.

It outlines a vision to grow and diversify the economy over the next 20 years by creating more jobs; strengthening the region's cities, towns and villages; and sustainably managing its agricultural, mining and natural resources.

You can have a say on the draft Plan which is now on exhibition.

## Who will oversee the final Plan?

A Coordination and Monitoring Committee will be established to implement the final Regional Plan. The Department of Planning and Environment will chair the committee, which will also include State agencies and councils (see below).



The committee will coordinate and drive the delivery of actions in the final Plan and provide recommendations for land use and infrastructure funding priorities.

It will prepare an annual report on progress and review and update the Plan every five years, or as necessary.

# Riverina-Murray Implementation of Final Plan

## ○ Fact Sheet #9



April 2016

## How will the final Plan be implemented?

Once the Regional Plan has been finalised, the committee will be responsible for:

- driving the delivery and monitoring of actions within the plan;
- identifying potential policy intervention and resourcing issues;
- establishing frameworks to monitor other issues such as population, housing, employment and the environment;
- providing recommendations for land use and infrastructure funding priorities; and
- reporting annual progress and updating the plan every five years.

Councils will be responsible for implementing the actions relevant to their local government area through their local planning strategies and local environmental plans.

The final Plan will replace the previous Draft Murray Regional Strategy (2009) for the local government areas of City of Albury, Balranald, Berrigan, Conargo, Corowa, Deniliquin, Greater Hume, Murray, Wakool, and Wentworth.

## Further information

To find out more about what is in the draft Plan and to make a comment visit:  
[www.planning.nsw.gov.au/riverinamurray](http://www.planning.nsw.gov.au/riverinamurray)