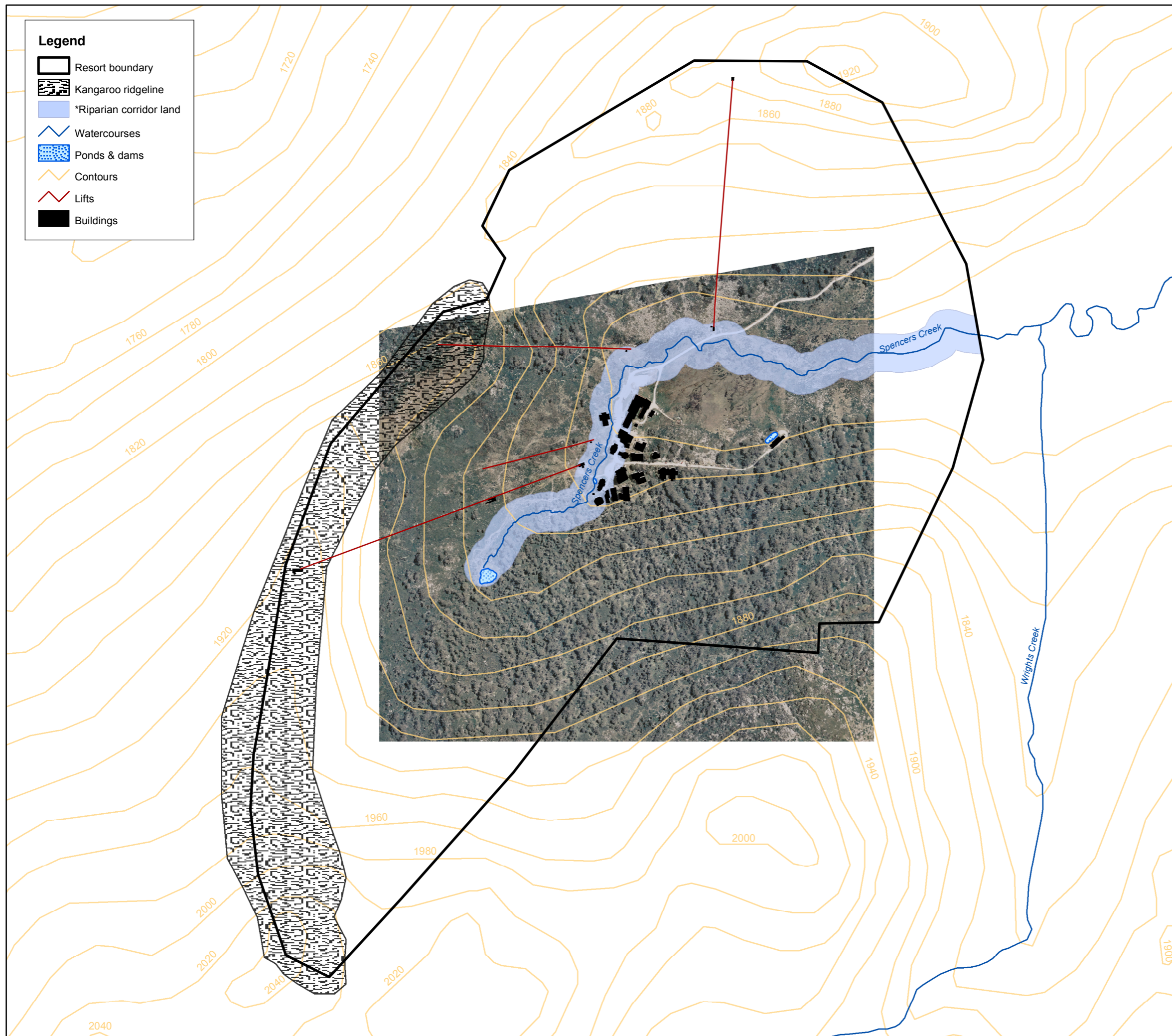




**Legend**

-  Resort boundary
-  Kangaroo ridgeline
-  \*Riparian corridor land
-  Watercourses
-  Ponds & dams
-  Contours
-  Lifts
-  Buildings

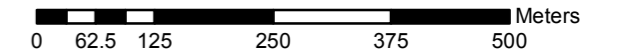


1:8,000

N



GDA 1994 MGA Zone 55  
Scale based on Resort Size



**Notations:**

Map produced by NSW Department of Planning, Jindabyne Office, 29 September 2006  
Data supplied by NSW Department of Lands and AAM Surveys Pty Ltd

Aerial coverage at 1:8000 scale for part of the land within Charlotte Pass Alpine Resort is not available. For further information contact NSW Department of Planning.

\* Riparian corridor land 40 metre buffer

Disclaimer: The State of New South Wales and the Department of Planning and its employees, officers, agents or servants are not responsible for the result of any actions taken on the basis of the information contained on this map or for any errors, omissions or inaccuracies contained in this map. The State of New South Wales and its employees, officers, agents or servants expressly disclaim all and any liability and responsibility to any person in respect of anything and of the consequence of anything done or omitted to be done by any such person in reliance, whether wholly or partially upon the information contained in the map.

© Copyright New South Wales Government

**ENVIRONMENTAL PLANNING & ASSESSMENT ACT 1979  
STATE ENVIRONMENTAL PLANNING POLICY  
(KOSCIUSZKO NATIONAL PARK - ALPINE RESORTS) 2007**

I, FRANK SARTOR, MINISTER FOR PLANNING, MAKE THE  
STATE ENVIRONMENTAL PLANNING POLICY (KOSCIUSZKO  
NATIONAL PARK- ALPINE RESORTS) 2007 PURSUANT TO  
ENVIRONMENTAL PLANNING & ASSESSMENT ACT 1979.