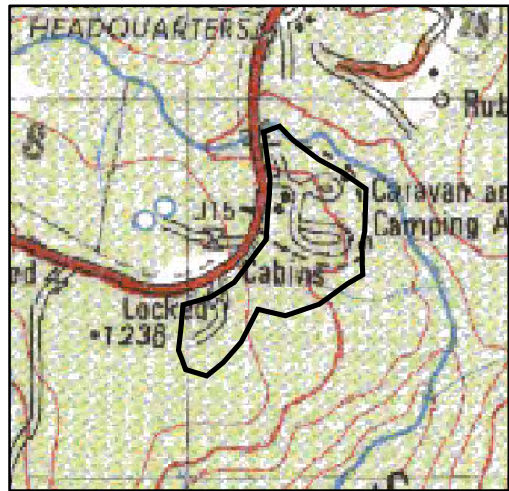


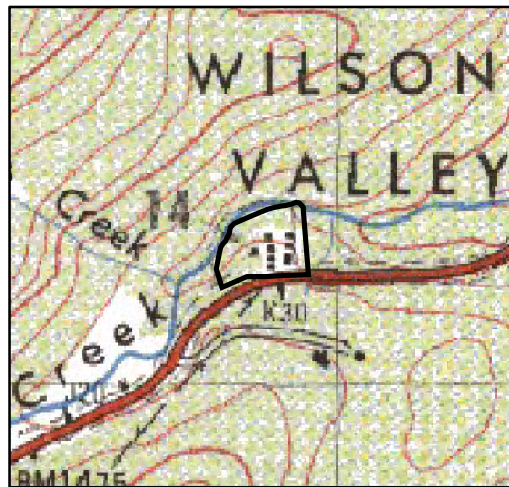
Sponars Chalet Alpine Resort

0 125 250 500 750 1,000 Meters



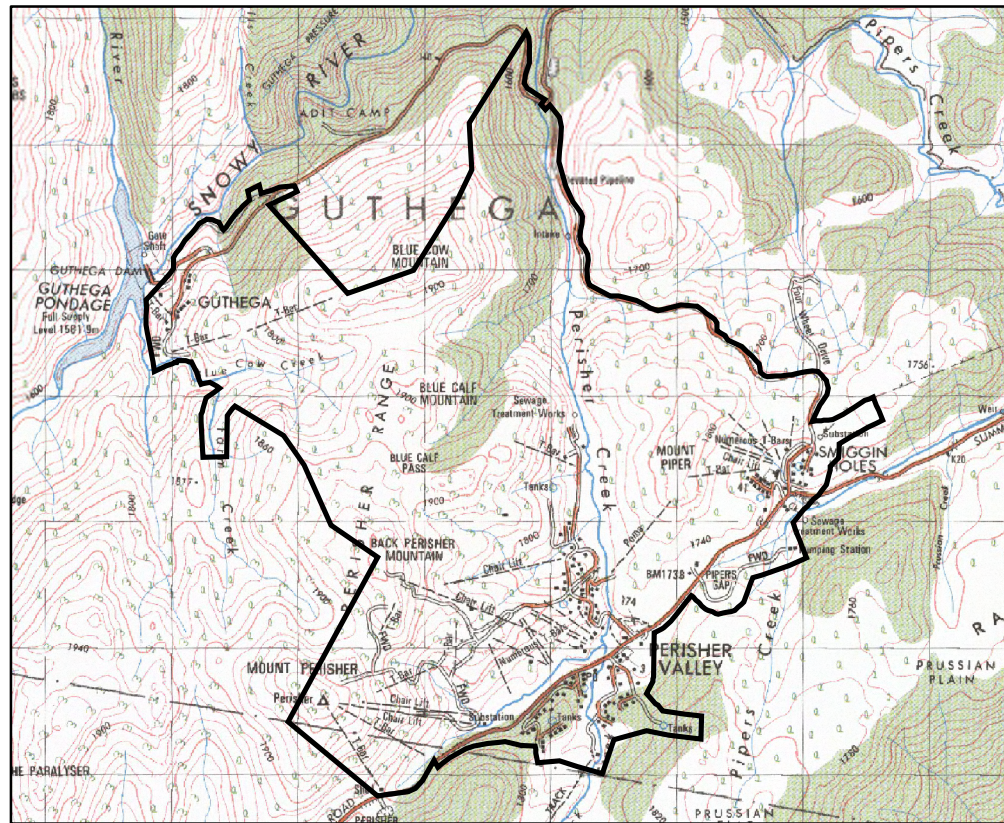
Kosciuszko Mountain Retreat Alpine Resort

0 125 250 500 750 1,000 Meters



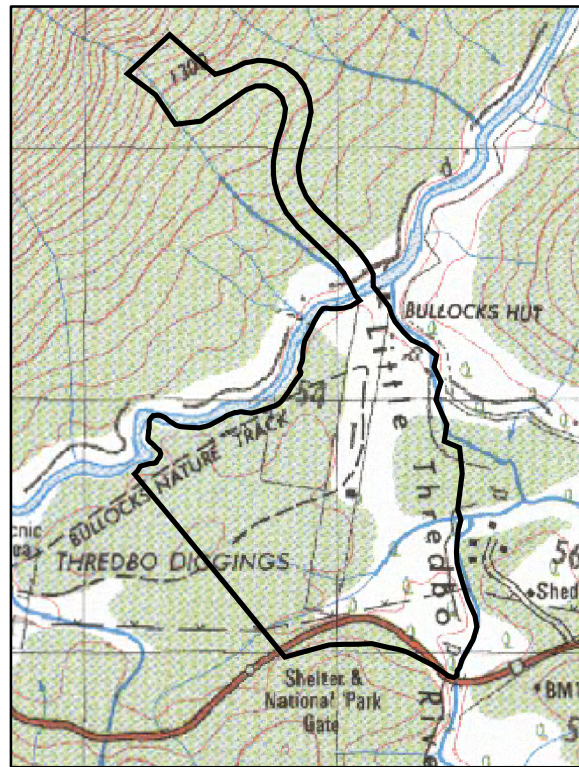
Ski Rider Alpine Resort

0 125 250 500 750 1,000 Meters



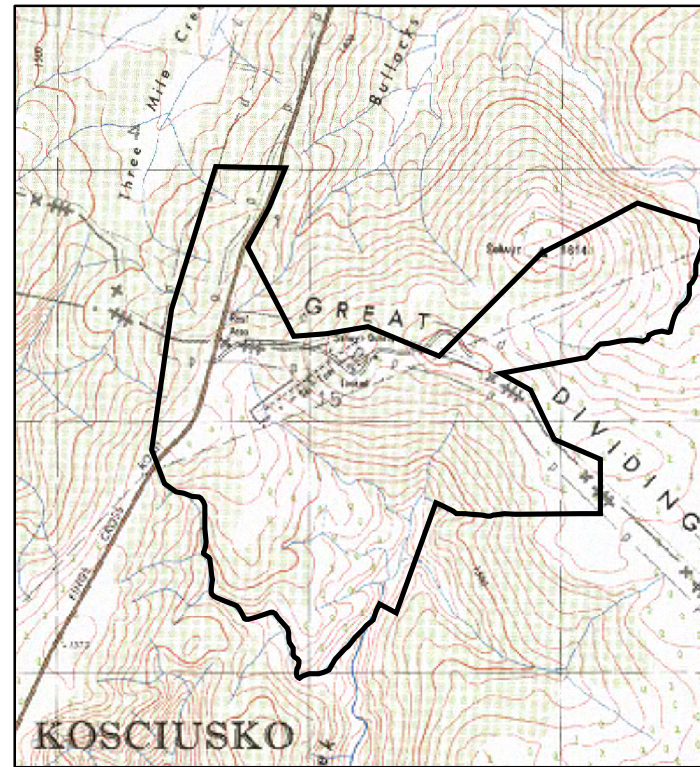
Perisher Range Alpine Resort

0 500 1,000 2,000 3,000 4,000 Meters



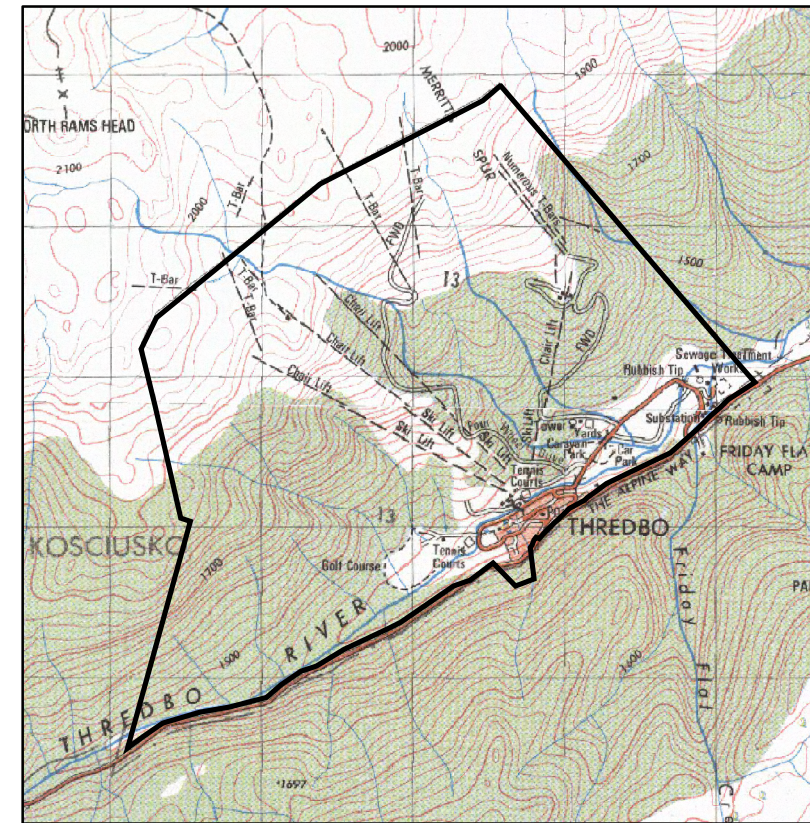
Bullocks Flat Terminal

0 250 500 1,000 1,500 2,000 Meters



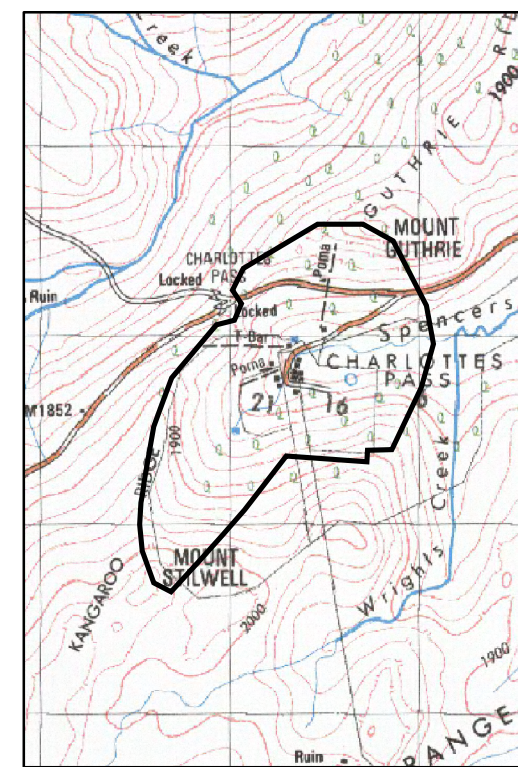
Mount Selwyn Alpine Resort

0 250 500 1,000 1,500 2,000 Meters



Thredbo Alpine Resort

0 375 750 1,500 2,250 3,000 Meters



Charlotte Pass Alpine Resort

0 250 500 1,000 1,500 2,000 Meters

LAND TO WHICH THIS POLICY APPLIES



Description of Boundaries

All boundaries are based on either the boundaries included in the Kosciuszko National Park Plan of Management, 2006 or the lease area boundaries. Some boundaries have been amended to include resort related infrastructure.

Thredbo Alpine Resort, Perisher Range Alpine Resort and Mount Selwyn Alpine Resort

Boundaries are based on Kosciuszko National Park Plan of Management, 2006 – Alpine Resort Zone boundary, and adjusted to include resort related infrastructure.

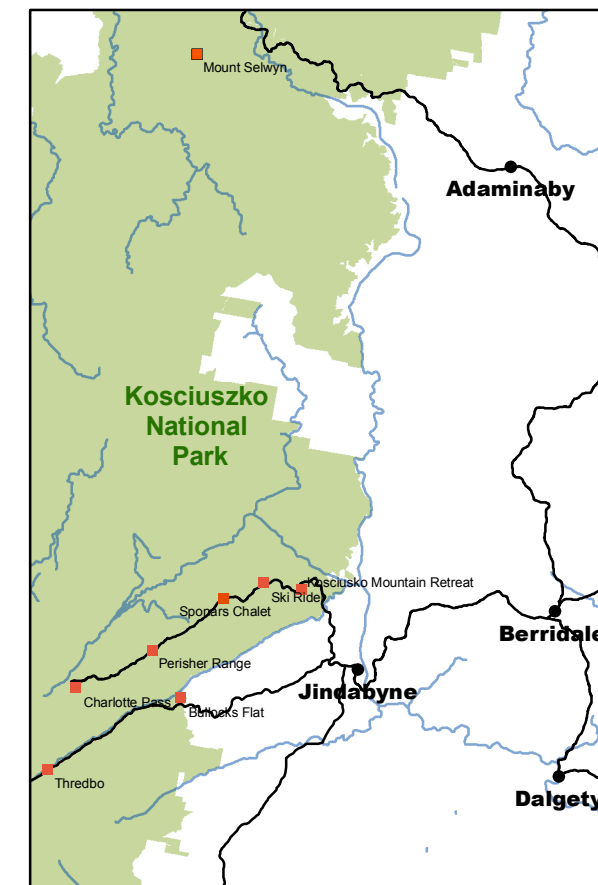
Sponars Chalet Alpine Resort and Ski Rider Alpine Resort

Boundaries are based on Kosciuszko National Park Plan of Management, 2006 – Visitors Services Zone boundary, and adjusted to include resort related infrastructure.

Bullocks Flat Terminal and Kosciuszko Mountain Retreat Alpine Resort

Boundaries are based on lease boundary.

Location Diagram



Map produced by NSW Department of Planning, Jindabyne Office, 30 November 2006.

Data supplied by NSW Department of Lands. Copies of this map are available through the NSW Department of Planning - (02) 6456 1733

© Copyright New South Wales Government



NSW DEPARTMENT OF PLANNING ENVIRONMENTAL PLANNING AND ASSESSMENT ACT, 1979 STATE ENVIRONMENTAL PLANNING POLICY (KOSCIUSZKO NATIONAL PARK – ALPINE RESORTS) 2007 LAND APPLICATION MAP

ENVIRONMENTAL PLANNING & ASSESSMENT ACT 1979
STATE ENVIRONMENTAL PLANNING POLICY (KOSCIUSZKO NATIONAL PARK - ALPINE RESORTS) 2007.

I, FRANK SARTOR, MINISTER FOR PLANNING, MAKE THE STATE ENVIRONMENTAL PLANNING POLICY (KOSCIUSZKO NATIONAL PARK – ALPINE RESORTS) 2007 PURSUANT TO ENVIRONMENTAL PLANNING & ASSESSMENT ACT 1979.

SYDNEY

MINISTER FOR PLANNING
2007