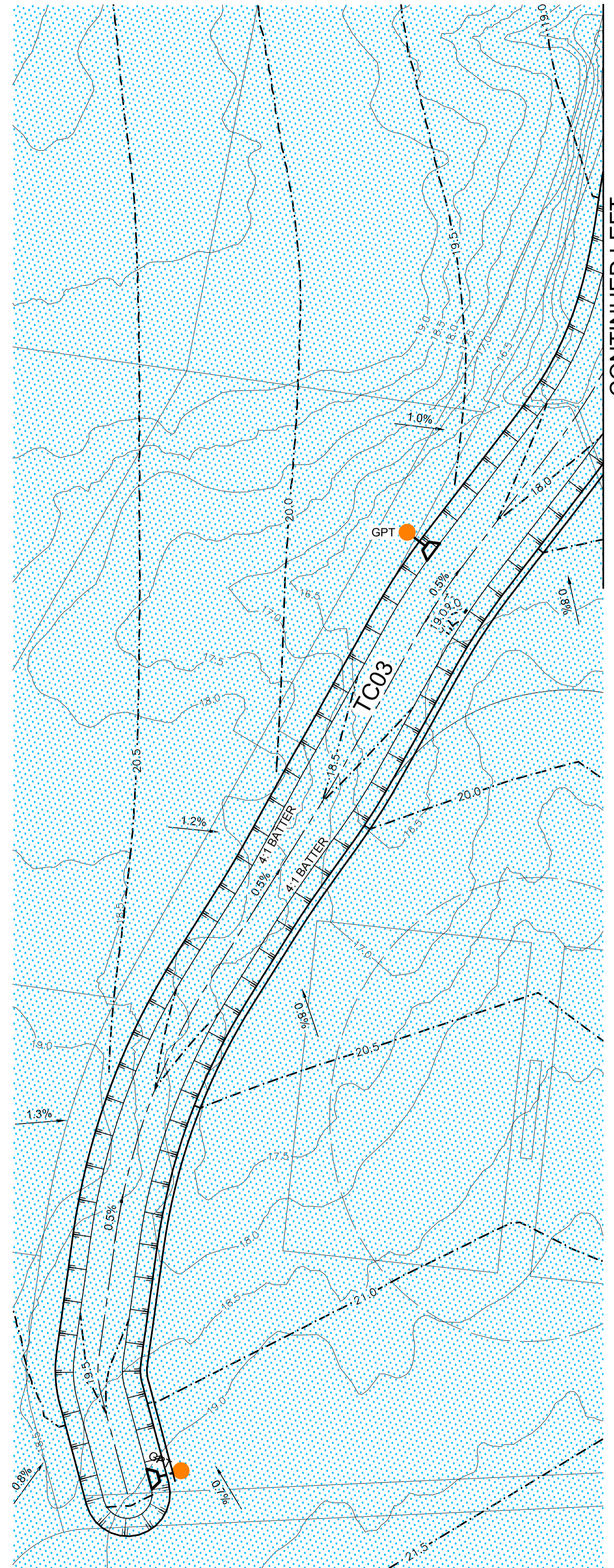
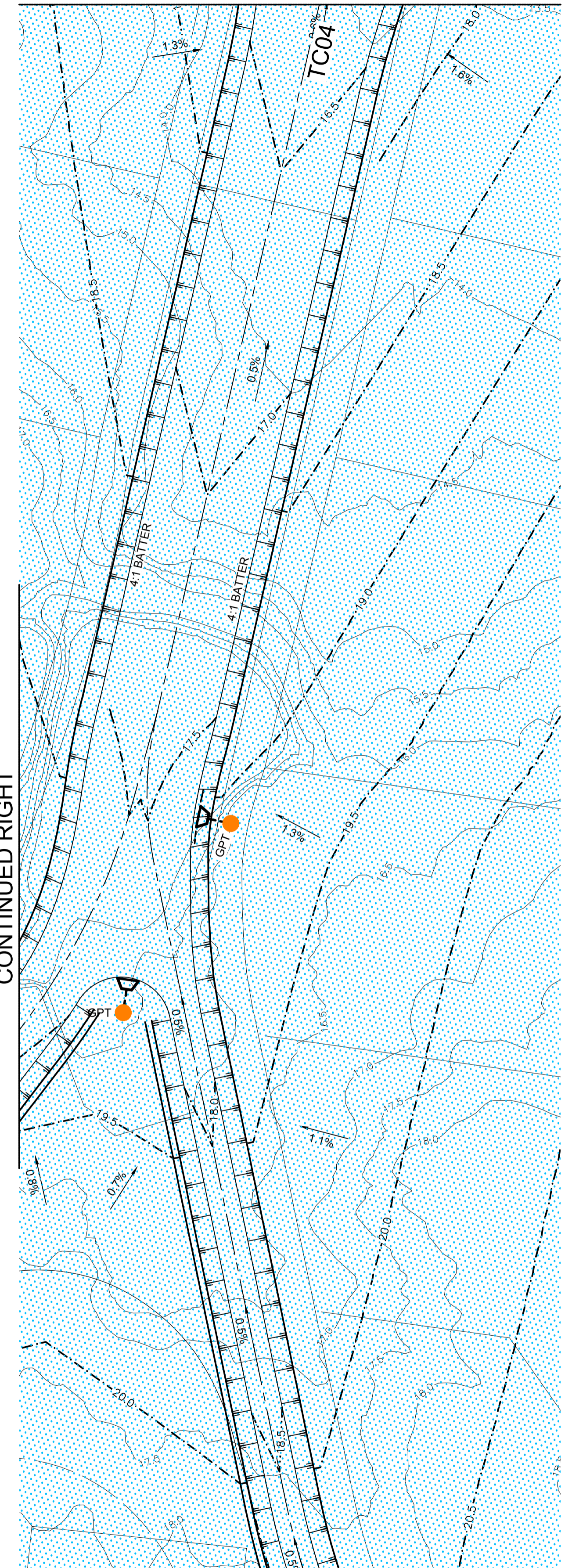


Plotted: 6 June 2013 8:15:48 AM File Name: J:\9351\DK - Concept Sketch Designs\9351\SK314.dwg

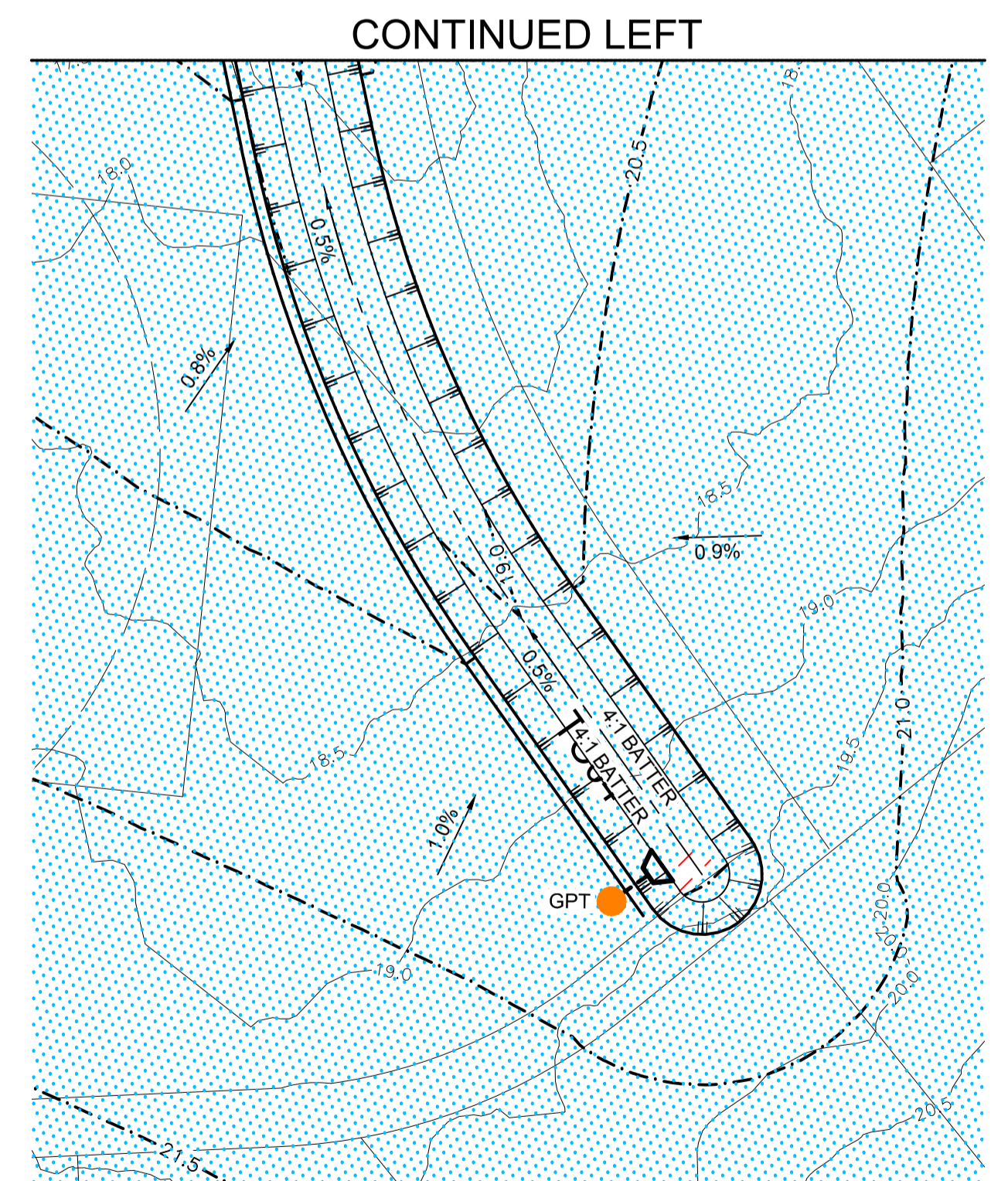
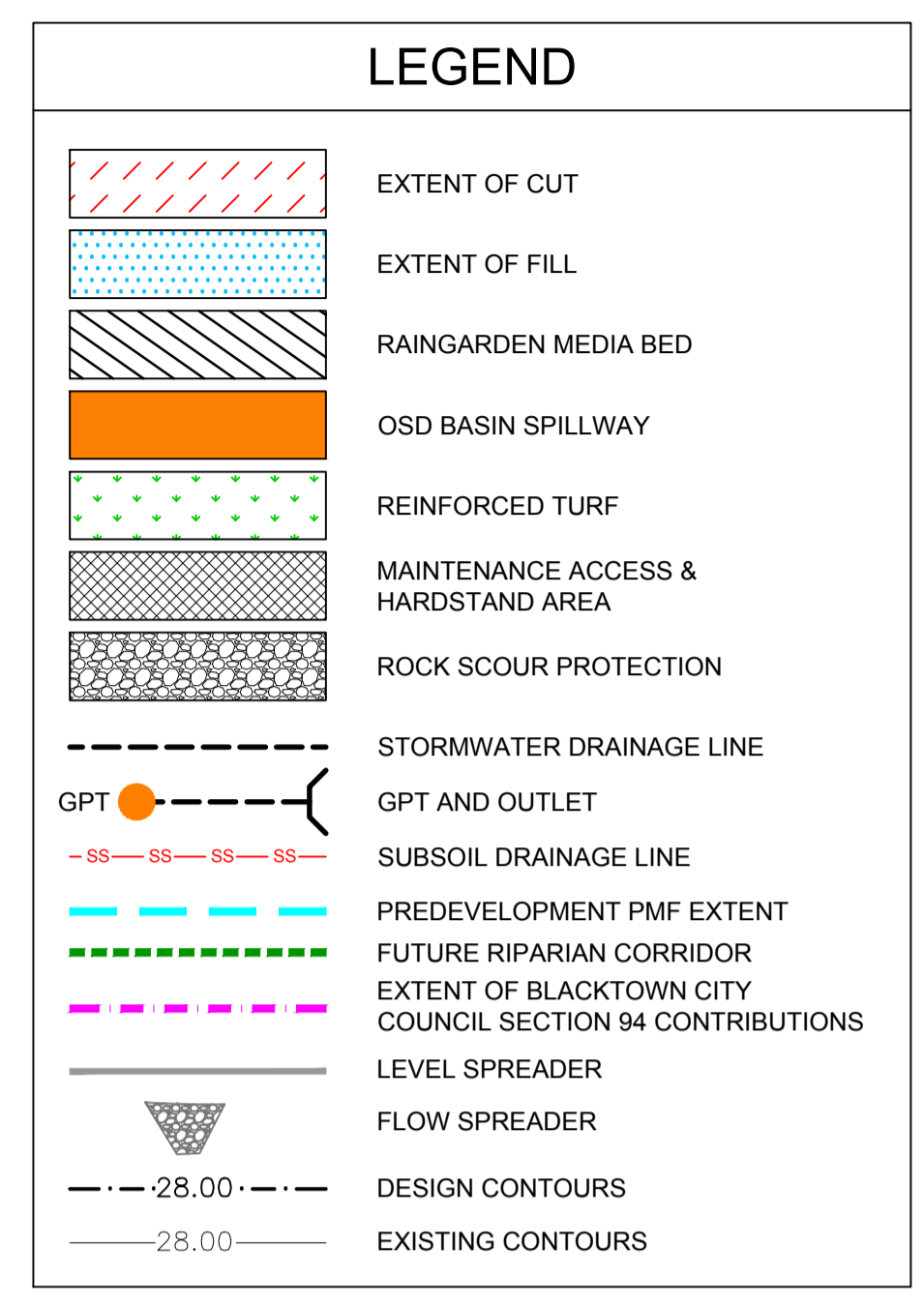


CONTINUED LEFT

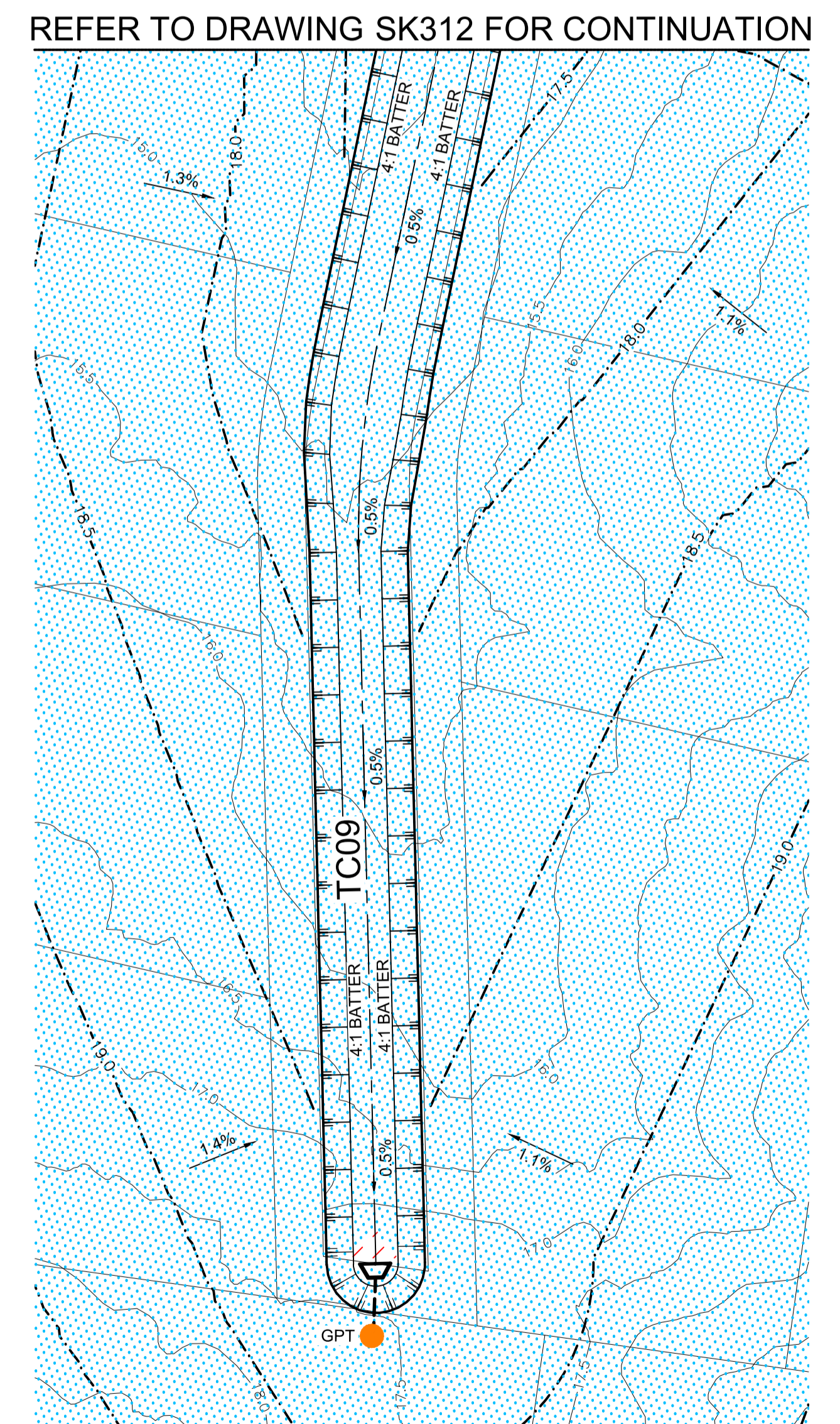


CONTINUED RIGHT

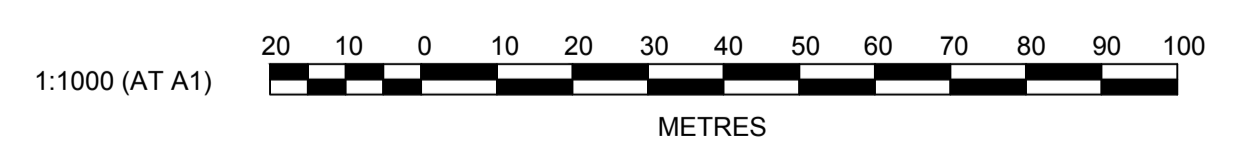
CONTINUED RIGHT



CONTINUED LEFT



REFER TO DRAWING SK312 FOR CONTINUATION



AMENDMENT	DES	DRN	CKD	APR	DATE
D	KM	KM	DH	DC	
C	KM	LVD	MS	DC	06/05/13
B	PAS	LVD	JC	DC	27/07/12
A	PAS	LVD	JC	DC	04/07/12

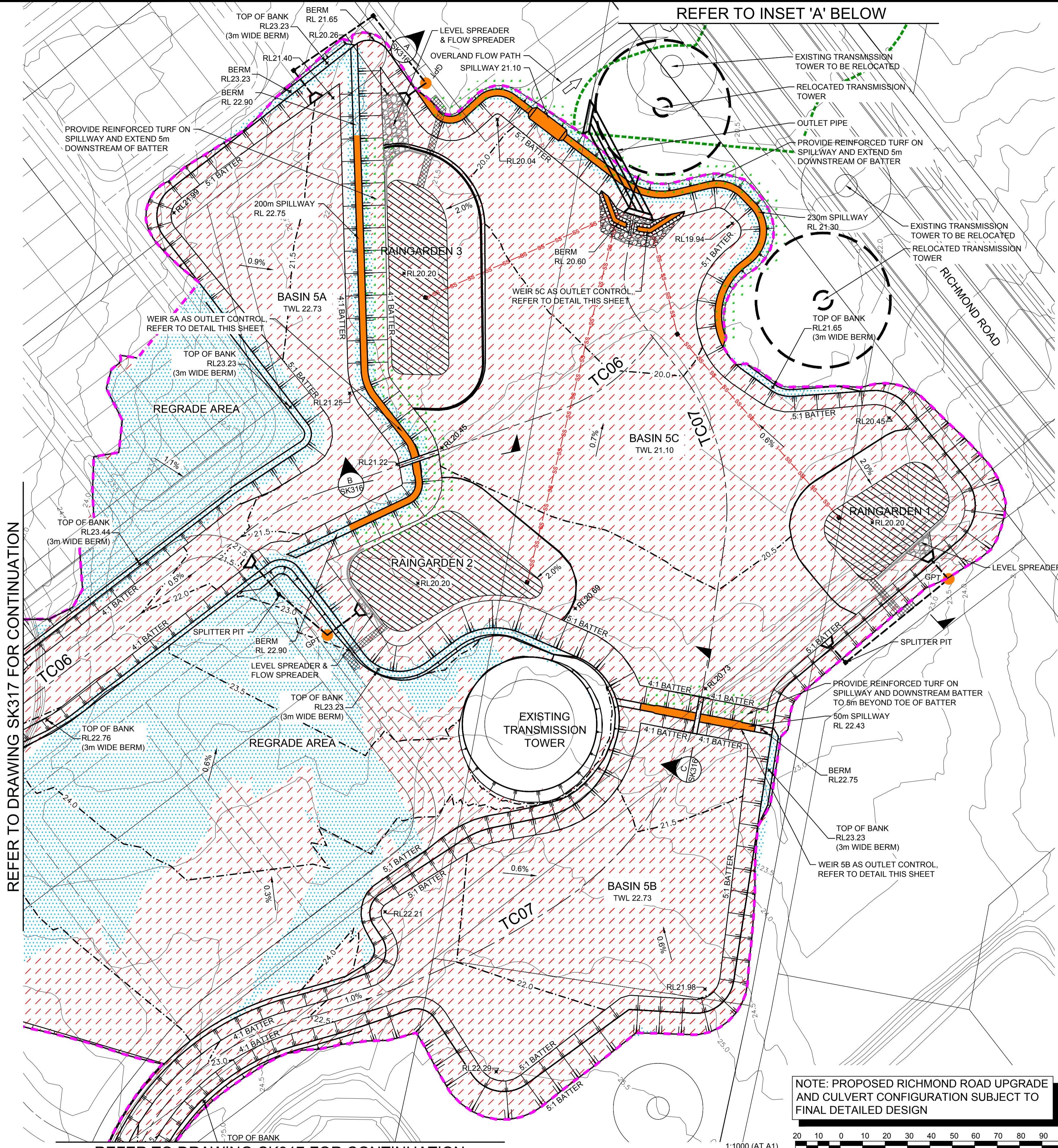
**J. WYNDHAM PRINCE** CONSULTING CIVIL INFRASTRUCTURE ENGINEERS & PROJECT MANAGERS  
 PO Box 4366 PENRITH WESTFIELD NSW 2750  
 P 02 4720 3300 F 02 4721 7638 W www.jwprince.com.au E jwp@jwprince.com.au

AZIMUTH:  
 DATUM:  
 ORIGIN:

CLIENT:  
  
 WINTEN PROPERTY GROUP  
 THIS DRAWING MUST NOT BE USED FOR CONSTRUCTION UNLESS SIGNED AS PART OF AN APPROVED CONSTRUCTION CERTIFICATE.

**ADVANCE COPY ONLY**  
**NOT FOR CONSTRUCTION**  
 MARSDEN PARK RESIDENTIAL PRECINCT  
 CHANNELS TC03, TC04 AND TC09  
 PLAN

PLAN No:	9351/SK314	<input type="checkbox"/>
FILE No:	9351SK314	
SHEET SIZE:	A1 ORIGINAL	



### LEGEND

- EXTENT OF CUT
- EXTENT OF FILL
- RAINGARDEN MEDIA BED
- OSD BASIN SPILLWAY
- REINFORCED TURF
- MAINTENANCE ACCESS & HARDSTAND AREA
- ROCK SCOUR PROTECTION
- STORMWATER DRAINAGE LINE
- GPT AND OUTLET
- SUBSOIL DRAINAGE LINE
- PREDEVELOPMENT PMF EXTENT
- FUTURE RIPARIAN CORRIDOR
- EXTENT OF BLACKTOWN CITY COUNCIL SECTION 94 CONTRIBUTIONS
- LEVEL SPREADER
- FLOW SPREADER
- DESIGN CONTOURS
- EXISTING CONTOURS

### BASIN 5 RAINGARDEN SUMMARY

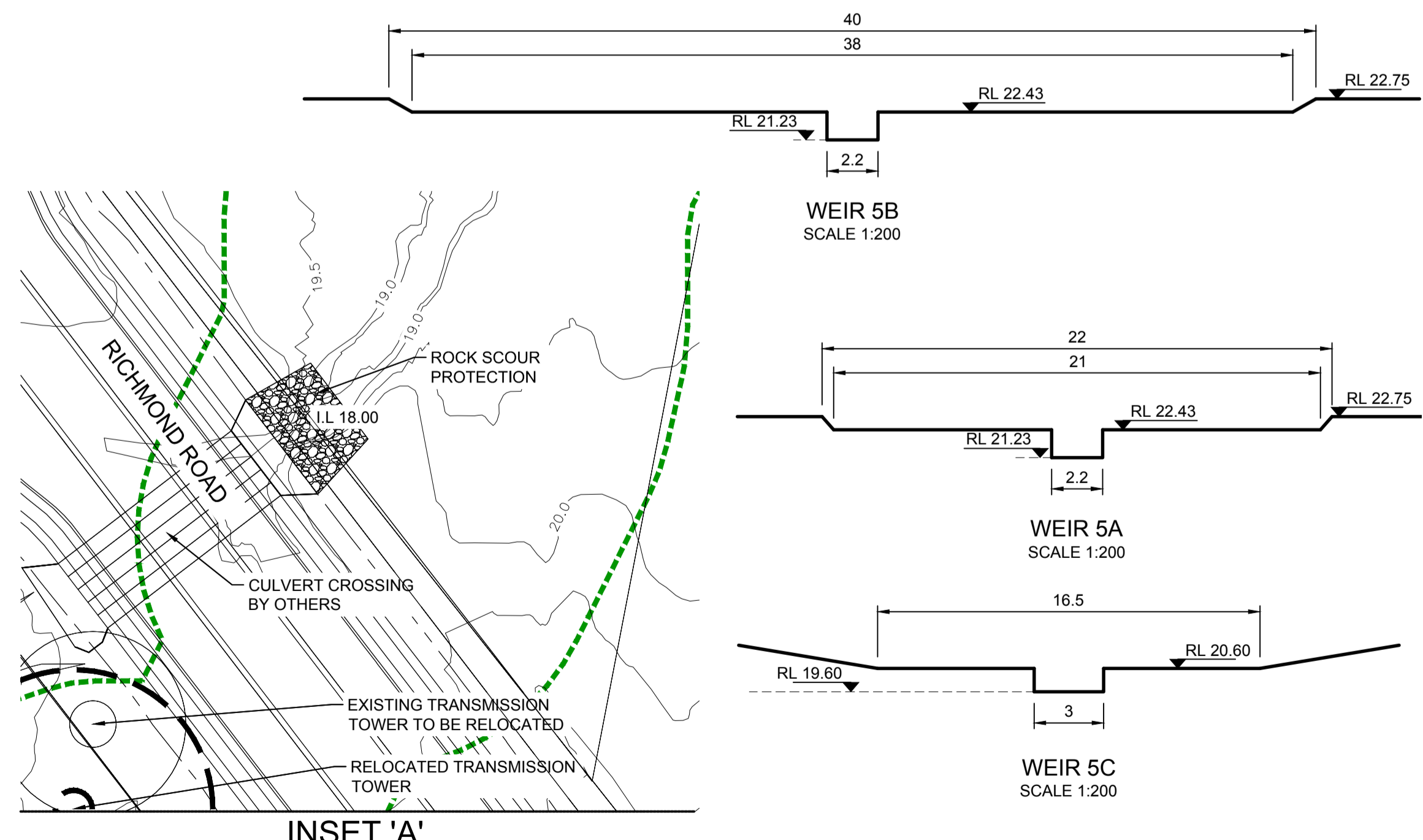
LOCATION	MEDIA BED SURFACE AREA (m2)
RAINGARDEN 1	1700
RAINGARDEN 2	2620
RAINGARDEN 3	2135
RAINGARDEN 5B-OS	600
RAINGARDEN 5D	1600
<b>TOTAL</b>	<b>4335</b>

NOTE: RAINGARDEN AREAS SUBJECT TO CHANGE

### BASIN 5 SUMMARY TABLE

LOCATION	OSD STORAGE VOLUME (m3)	S94 EXTENT OF CUT (m3)	S94 EXTENT OF FILL (m3)	S94 BALANCE (m3)	S94 DISTURBED AREA (m2)
BASIN 5A	13605	-	-	-	-
BASIN 5B	14845	-	-	-	-
BASIN 5C	32510	-	-	-	-
<b>BASIN 5 TOTAL</b>	<b>-</b>	<b>-136970</b>	<b>3152</b>	<b>-133818</b>	<b>91472</b>
TC06	-	-27877	463	-27414	19974
TC07	-	-13093	321	-12772	15627
<b>TOTAL</b>	<b>60960</b>	<b>-177940</b>	<b>3936</b>	<b>-174004</b>	<b>127073</b>

NOTE: VOLUMES ARE MEASURED BETWEEN THE EXISTING SURFACE AND THE FINAL DESIGN SURFACE AND DO NOT ALLOW FOR TOPSOIL REMOVAL OR RESPREAD



NOTE: PROPOSED RICHMOND ROAD UPGRADE AND CULVERT CONFIGURATION SUBJECT TO FINAL DETAILED DESIGN

1:1000 (AT A1)

0 10 20 30 40 50 60 70 80 90 100 METRES

Plotfile: 27 May, 2019 3:25:58 PM File Name: J:\09351\DISK - Concept Sketch Designs\09351\SK315.dwg

AMENDMENT	DES	DRN	CKD	APR	DATE
C		LVD	MS	DC	06/05/13
B		LVD	JC	DC	27/07/12
A		LVD	JC	DC	04/07/12

**J. WYNDHAM PRINCE** CONSULTING CIVIL INFRASTRUCTURE ENGINEERS & PROJECT MANAGERS

PO Box 4366 PENRITH WESTFIELD NSW 2750  
 P 02 4720 3300 F 02 4721 7638 W www.jwprince.com.au E jwp@jwprince.com.au

AZIMUTH:  
 DATUM:  
 ORIGIN:

CLIENT:

**WINTEN PROPERTY GROUP**

THIS DRAWING MUST NOT BE USED FOR CONSTRUCTION UNLESS SIGNED AS PART OF AN APPROVED CONSTRUCTION CERTIFICATE.

**ADVANCE COPY ONLY**  
 NOT FOR CONSTRUCTION

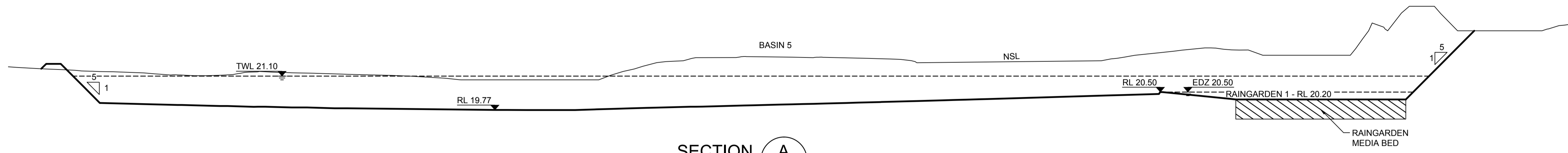
MARSDEN PARK RESIDENTIAL PRECINCT

BASIN 5 PLAN

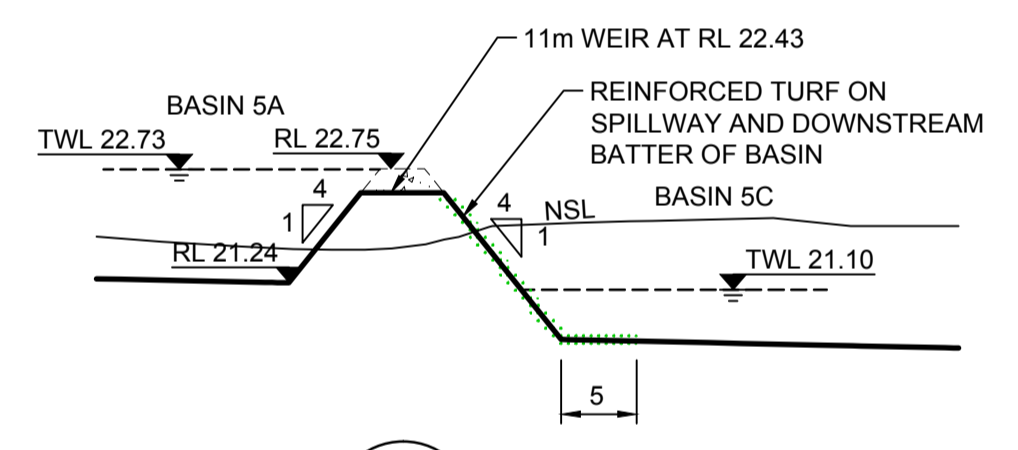
PLAN No: 9351/SK315 **C**

FILE No: 9351SK315

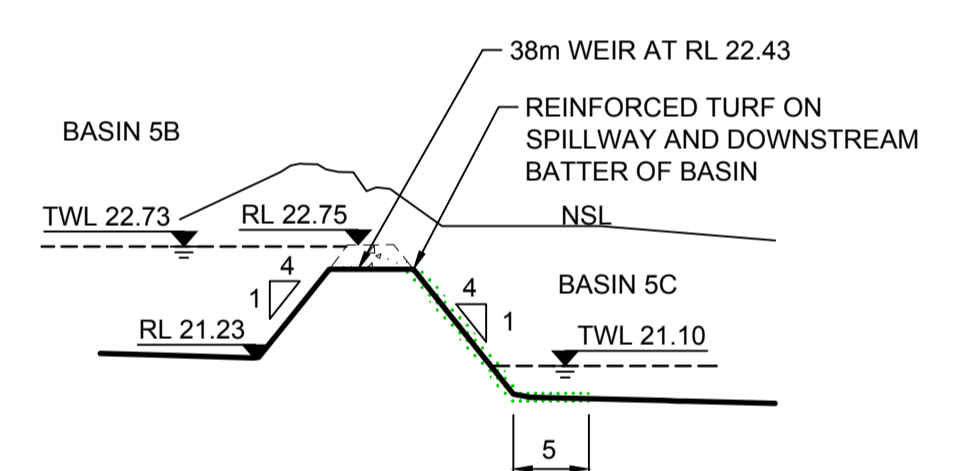
SHEET SIZE: A1 ORIGINAL



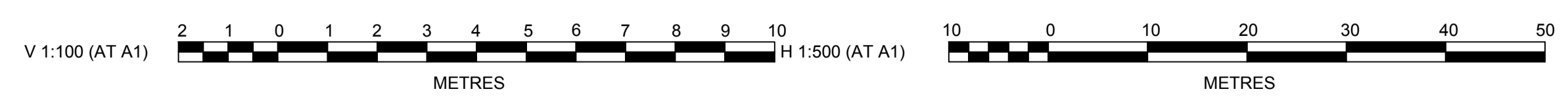
**SECTION A**  
SCALE H 1:500  
V 1:100  
SK315



**SECTION B**  
SCALE H 1:500  
V 1:100  
SK315



**SECTION C**  
SCALE H 1:500  
V 1:100  
SK315



**J. WYNDHAM PRINCE** CONSULTING CIVIL INFRASTRUCTURE ENGINEERS & PROJECT MANAGERS

PO Box 4366 PENRITH WESTFIELD NSW 2750  
P 02 4720 3300 F 02 4721 7638 W www.jwprince.com.au E jwp@jwprince.com.au

AZIMUTH:  
DATUM:  
ORIGIN:

CLIENT:

THIS DRAWING MUST NOT BE USED FOR CONSTRUCTION UNLESS SIGNED AS PART OF AN APPROVED CONSTRUCTION CERTIFICATE.

**ADVANCE COPY ONLY**  
NOT FOR CONSTRUCTION

MARSDEN PARK RESIDENTIAL PRECINCT

BASIN 5 SECTIONS

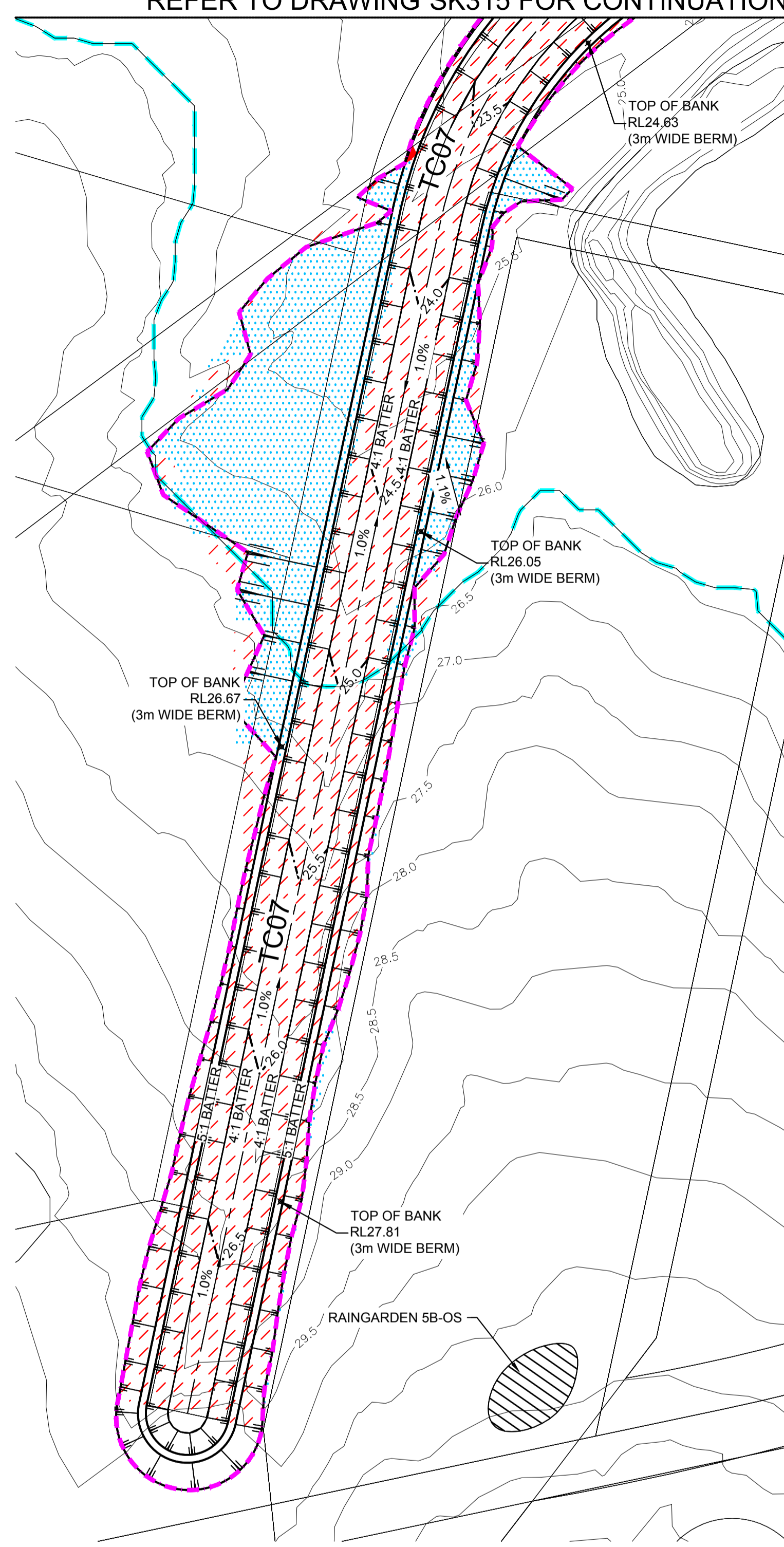
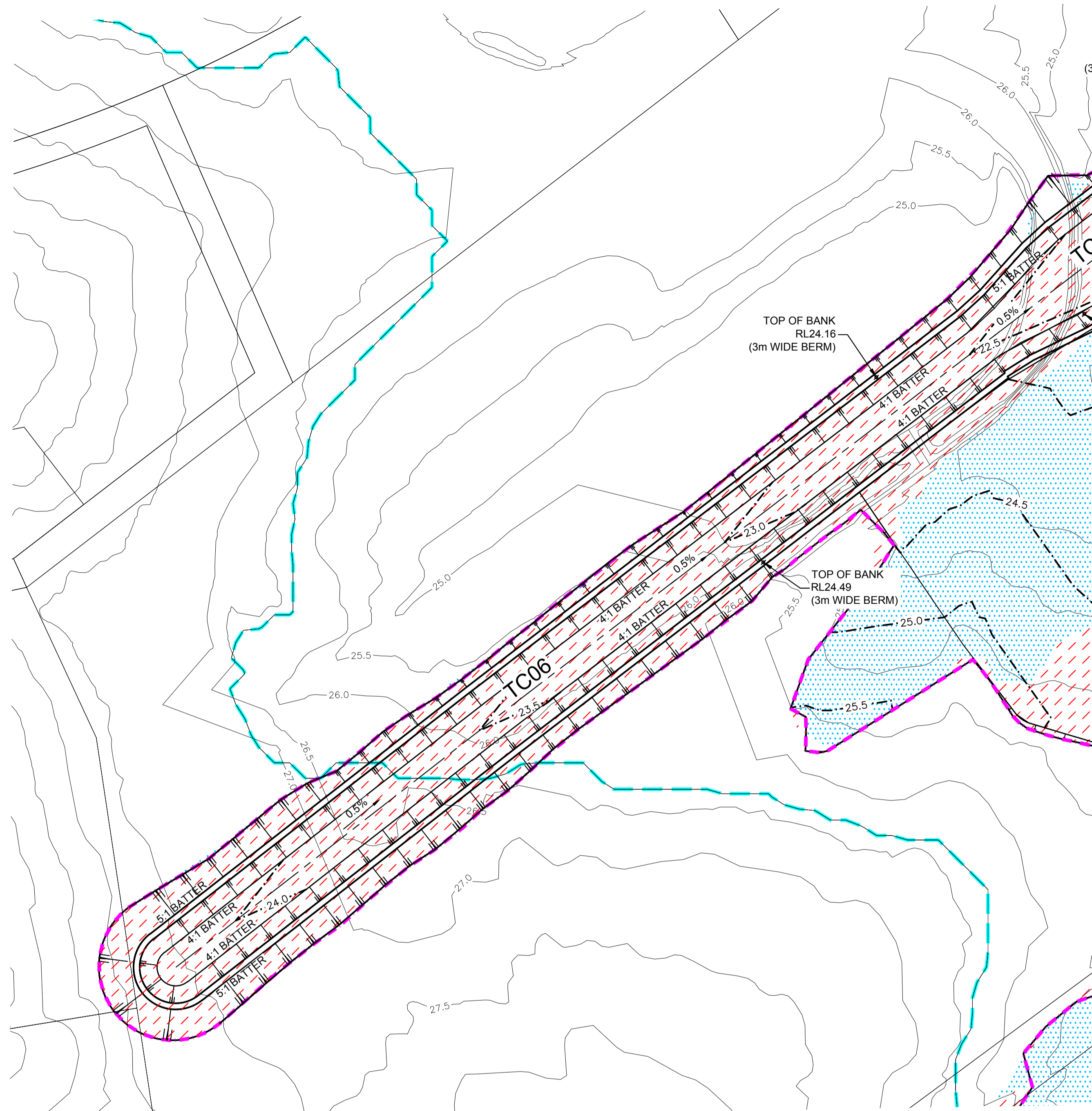
PLAN No:	9351/SK316	C
FILE No:	9351SK316	
SHEET SIZE:	A1 ORIGINAL	

AMENDMENT	DES	DRN	CKD	APR	DATE
C	KM	LVD	MS	DC	06/05/13
B	PAS	LVD	JC	DC	27/07/12
A	PAS	LVD	JC	DC	04/07/12

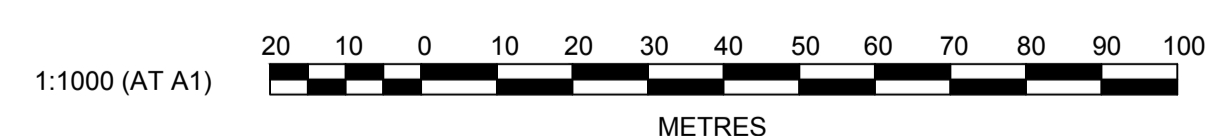
Plotted: 7 May 2013 3:34:52 PM File Name: J:\9351\DISK - Concept Sketch Designs\9351SK316.dwg

REFER TO DRAWING SK315 FOR CONTINUATION

REFER TO DRAWING SK315 FOR CONTINUATION



LEGEND	
	EXTENT OF CUT
	EXTENT OF FILL
	RAINGARDEN MEDIA BED
	OSD BASIN SPILLWAY
	REINFORCED TURF
	MAINTENANCE ACCESS & HARDSTAND AREA
	ROCK SCOUR PROTECTION
	STORMWATER DRAINAGE LINE
	GPT AND OUTLET
	SUBSOIL DRAINAGE LINE
	PREDEVELOPMENT PMF EXTENT
	FUTURE RIPARIAN CORRIDOR
	EXTENT OF BLACKTOWN CITY COUNCIL SECTION 94 CONTRIBUTIONS
	LEVEL SPREADER
	FLOW SPREADER
	DESIGN CONTOURS
	EXISTING CONTOURS



**J. WYNDHAM PRINCE** CONSULTING CIVIL INFRASTRUCTURE ENGINEERS & PROJECT MANAGERS

PO Box 4366 PENRITH WESTFIELD NSW 2750  
P 02 4720 3300 F 02 4721 7638 W www.jwprince.com.au E jwp@jwprince.com.au

AZIMUTH:  
DATUM:  
ORIGIN:

CLIENT:

WINTEN PROPERTY GROUP

THIS DRAWING MUST NOT BE USED FOR CONSTRUCTION UNLESS SIGNED AS PART OF AN APPROVED CONSTRUCTION CERTIFICATE.

**ADVANCE COPY ONLY**  
NOT FOR CONSTRUCTION

MARSDEN PARK RESIDENTIAL PRECINCT

CHANNELS TC06 AND TC07  
PLAN

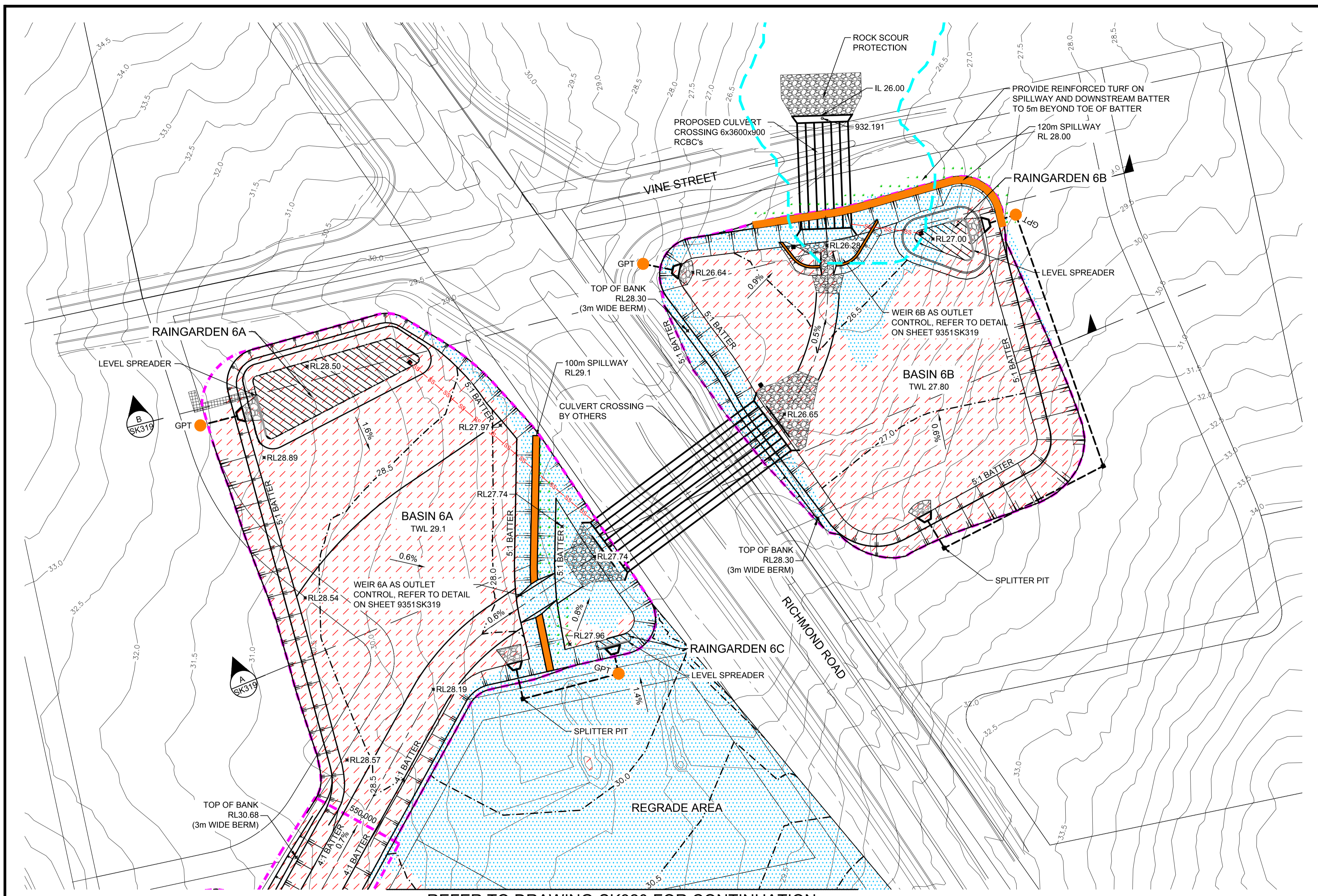
PLAN No: 9351/SK317 **D**

FILE No: 9351SK317

SHEET SIZE: A1 ORIGINAL

Plotted: 22 May 2013 3:16:42 PM File Name: J:\9351\DISK - Concept Sketch Designs\9351SK317.dwg

AMENDMENT	DES	DRN	CKD	APR	DATE
D	KM	KM	MS	DC	
C	KM	LVD	MS	DC	06/05/13
B	PAS	LVD	JC	DC	27/07/12
A	PAS	LVD	JC	DC	04/07/12



### LEGEND

- EXTENT OF CUT
- EXTENT OF FILL
- RAINGARDEN MEDIA BED
- OSD BASIN SPILLWAY
- REINFORCED TURF
- MAINTENANCE ACCESS & HARDSTAND AREA
- ROCK SCOUR PROTECTION
- STORMWATER DRAINAGE LINE
- GPT AND OUTLET
- SUBSOIL DRAINAGE LINE
- PREDEVELOPMENT PMF EXTENT
- FUTURE RIPARIAN CORRIDOR
- EXTENT OF BLACKTOWN CITY COUNCIL SECTION 94 CONTRIBUTIONS
- LEVEL SPREADER
- FLOW SPREADER
- DESIGN CONTOURS
- EXISTING CONTOURS

### BASIN 6 SUMMARY TABLE

LOCATION	OSD STORAGE VOLUME (m3)	S94 EXTENT OF CUT (m3)	S94 EXTENT OF FILL (m3)	S94 BALANCE (m3)	S94 DISTURBED AREA (m2)
BASIN 6A	11275	-14620	3155	-11465	19860
BASIN 6B	13775	-28605	3865	-24740	24665
TC08	-	-15745	4365	-11380	22145
RAINGARDEN 6E	-	-3780	0	-3780	2500
TOTAL	25050	-62750	11385	-51365	69170

NOTE: VOLUMES ARE MEASURED BETWEEN THE EXISTING SURFACE AND THE FINAL DESIGN SURFACE AND DO NOT ALLOW FOR TOPSOIL REMOVAL OR RESPREAD

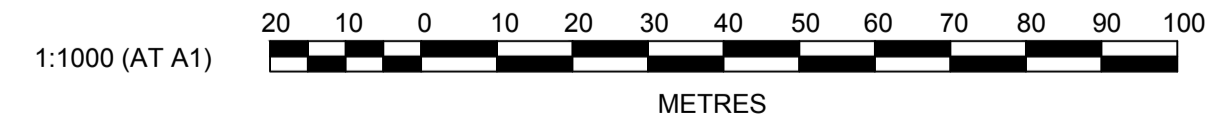
### BASIN 6 RAINGARDEN SUMMARY

LOCATION	MEDIA BED SURFACE AREA (m2)
RAINGARDEN 6A	1375
RAINGARDEN 6B	250
RAINGARDEN 6C	50
RAINGARDEN 6E	1000
TOTAL	2675

NOTE: RAINGARDEN AREAS SUBJECT TO CHANGE

REFER TO DRAWING SK320 FOR CONTINUATION

NOTE: PROPOSED RICHMOND ROAD UPGRADE SUBJECT TO FINAL DETAILED DESIGN



Plotfile: 27 May, 2013 3:22:35 PM File Name: J:\9351\DISK - Concept Sketch Designs\9351\SK318.dwg

AMENDMENT	DES	DRN	CKD	APR	DATE
D	KM	KM	MS	DC	
C	KM	LVD	MS	DC	06/05/13
B	PAS	LVD	JC	DC	27/07/12
A	PAS	LVD	JC	DC	04/07/12

**J. WYNDHAM PRINCE** CONSULTING CIVIL INFRASTRUCTURE ENGINEERS & PROJECT MANAGERS

PO Box 4366 PENRITH WESTFIELD NSW 2750  
 P 02 4720 3300 F 02 4721 7638 W www.jwprince.com.au E jwp@jwprince.com.au

AZIMUTH:  
 DATUM:  
 ORIGIN:

CLIENT:

THIS DRAWING MUST NOT BE USED FOR CONSTRUCTION UNLESS SIGNED AS PART OF AN APPROVED CONSTRUCTION CERTIFICATE.

**ADVANCE COPY ONLY**  
 NOT FOR CONSTRUCTION

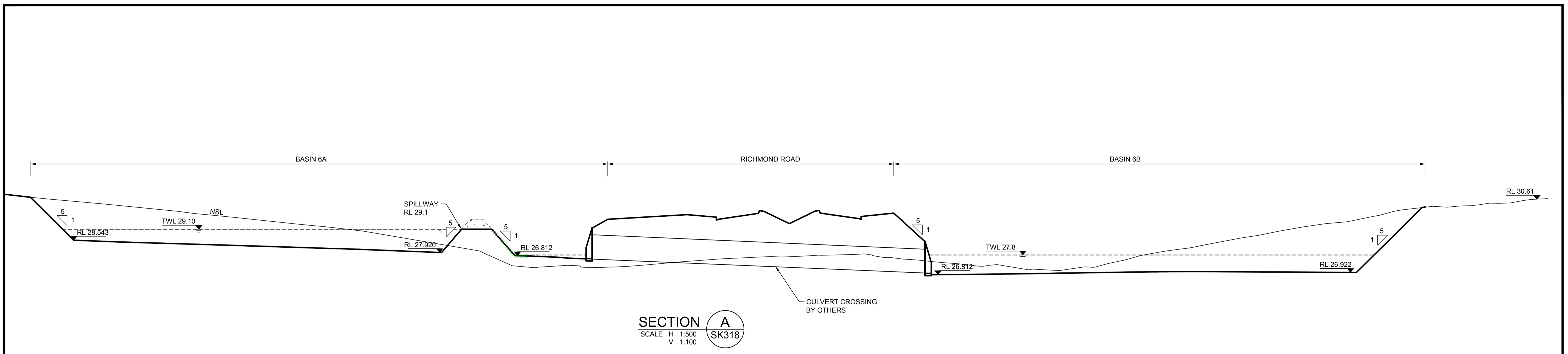
MARSDEN PARK RESIDENTIAL PRECINCT

BASIN 6 PLAN

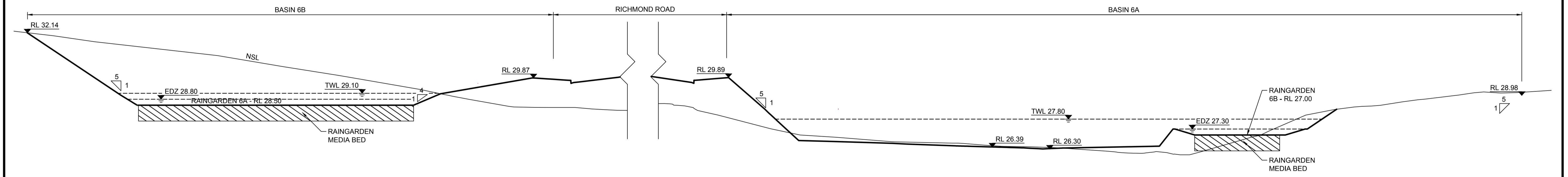
PLAN No: 9351/SK318 **D**

FILE No: 9351SK318

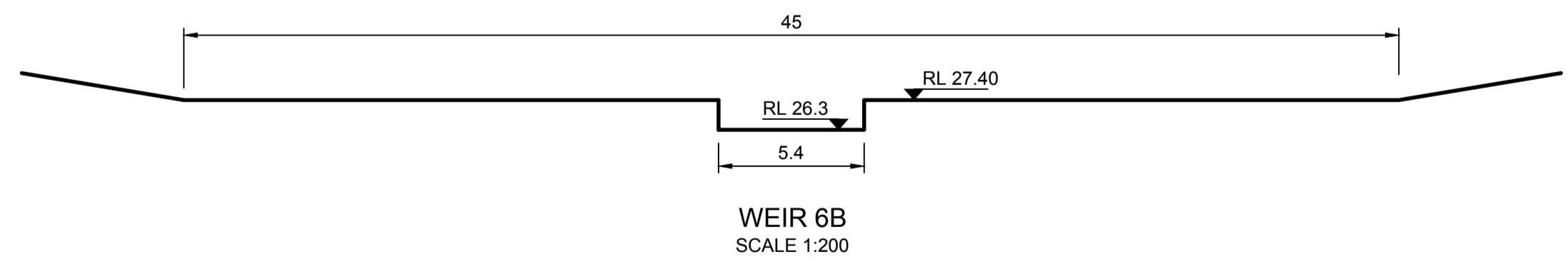
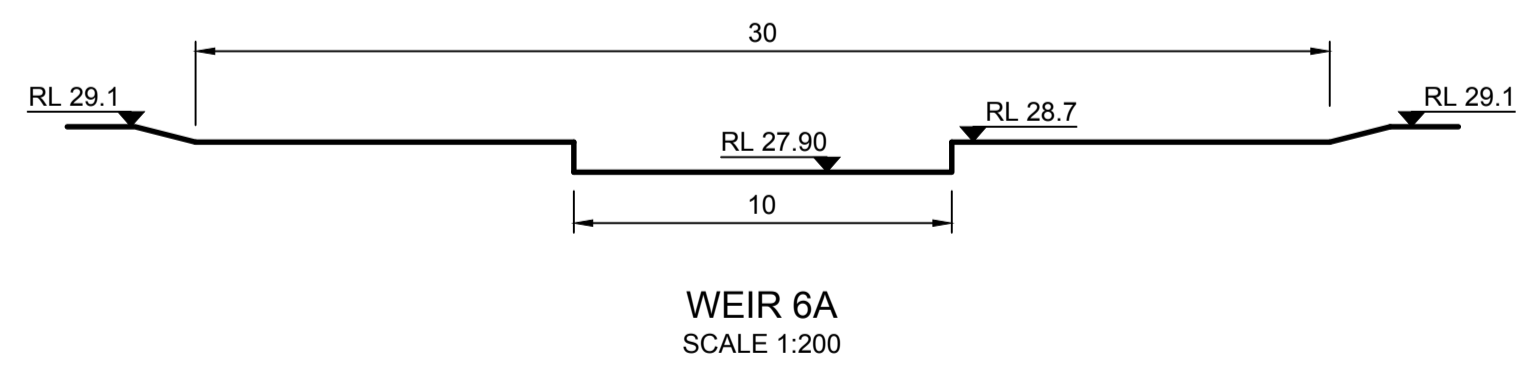
SHEET SIZE: A1 ORIGINAL



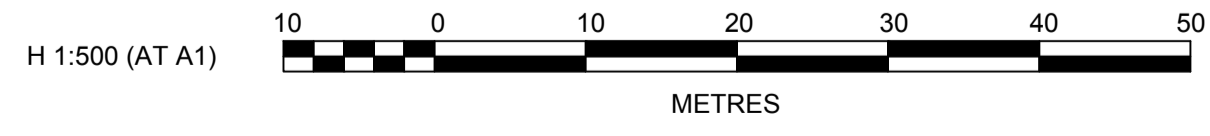
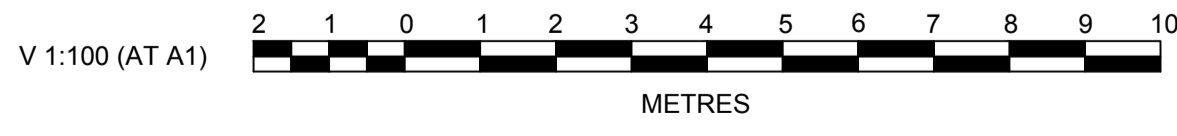
**SECTION A**  
SCALE H 1:500  
V 1:100  
SK318



**SECTION B**  
SCALE H 1:500  
V 1:100  
SK318



NOTE: PROPOSED RICHMOND ROAD UPGRADE  
SUBJECT TO FINAL DETAILED DESIGN



Plotted: 7 May 2013 3:37:42 PM File Name: J:\9351\DISK - Concept Sketch Designs\9351SK319.dwg

NO.	DESCRIPTION	DES	DRN	CKD	APR	DATE
C	POST EXHIBITION REVISED BASIN DESIGN	KM	LVD	MS	DC	06/05/13
B	ISSUED FOR EXHIBITION	PAS	LVD	JC	DC	27/07/12
A	ISSUED FOR EXHIBITION	PAS	LVD	JC	DC	04/07/12
	AMENDMENT	DES	DRN	CKD	APR	DATE

**J. WYNDHAM PRINCE** CONSULTING CIVIL INFRASTRUCTURE ENGINEERS & PROJECT MANAGERS  
 PO Box 4366 PENRITH WESTFIELD NSW 2750  
 P 02 4720 3300 F 02 4721 7638 W www.jwprince.com.au E jwp@jwprince.com.au

AZIMUTH:  
DATUM:  
ORIGIN:

CLIENT:  
  
 THIS DRAWING MUST NOT BE USED FOR CONSTRUCTION UNLESS SIGNED AS PART OF AN APPROVED CONSTRUCTION CERTIFICATE.

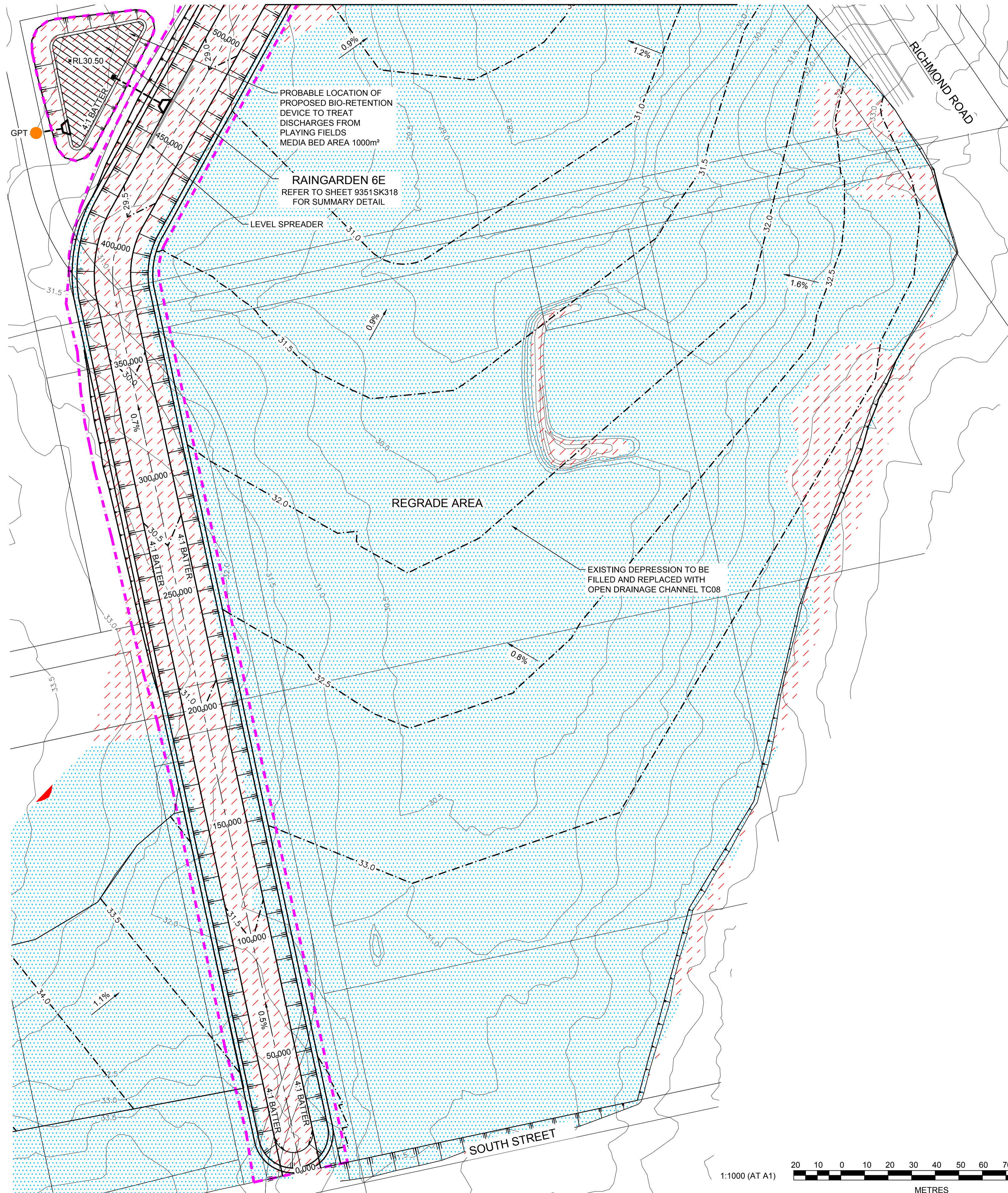
**ADVANCE COPY ONLY**  
NOT FOR CONSTRUCTION

MARSDEN PARK RESIDENTIAL PRECINCT

BASIN 6 SECTIONS

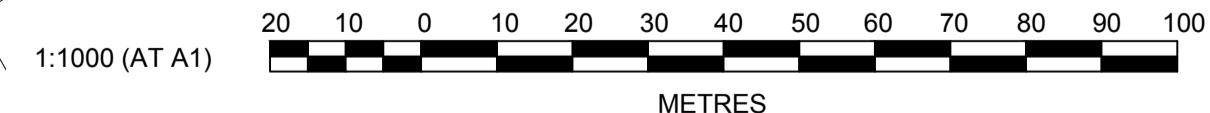
PLAN No: 9351/SK319 **C**  
 FILE No: 9351SK319  
 SHEET SIZE: A1 ORIGINAL

REFER TO DRAWING SK318 FOR CONTINUATION



LEGEND	
	EXTENT OF CUT
	EXTENT OF FILL
	RAINGARDEN MEDIA BED
	OSD BASIN SPILLWAY
	REINFORCED TURF
	MAINTENANCE ACCESS & HARDSTAND AREA
	ROCK SCOUR PROTECTION
	STORMWATER DRAINAGE LINE
	GPT AND OUTLET
	SUBSOIL DRAINAGE LINE
	PREDEVELOPMENT PMF EXTENT
	FUTURE RIPARIAN CORRIDOR
	EXTENT OF BLACKTOWN CITY COUNCIL SECTION 94 CONTRIBUTIONS
	LEVEL SPREADER
	FLOW SPREADER
	DESIGN CONTOURS
	EXISTING CONTOURS

Plotted: 7 May 2013 3:38:47 PM File Name: J:\9351\DISK - Concept Sketch Designs\9351SK320.dwg



AMENDMENT	DES	DRN	CKD	APR	DATE
C	KM	LVD	MS	DC	06/05/13
B	PAS	LVD	JC	DC	27/07/12
A	PAS	LVD	JC	DC	04/07/12

**J. WYNDHAM PRINCE** CONSULTING CIVIL INFRASTRUCTURE ENGINEERS & PROJECT MANAGERS

PO Box 4366 PENRITH WESTFIELD NSW 2750  
P 02 4720 3300 F 02 4721 7638 W www.jwprince.com.au E jwp@jwprince.com.au

AZIMUTH:  
DATUM:  
ORIGIN:

CLIENT:  
**WINTEN PROPERTY GROUP**

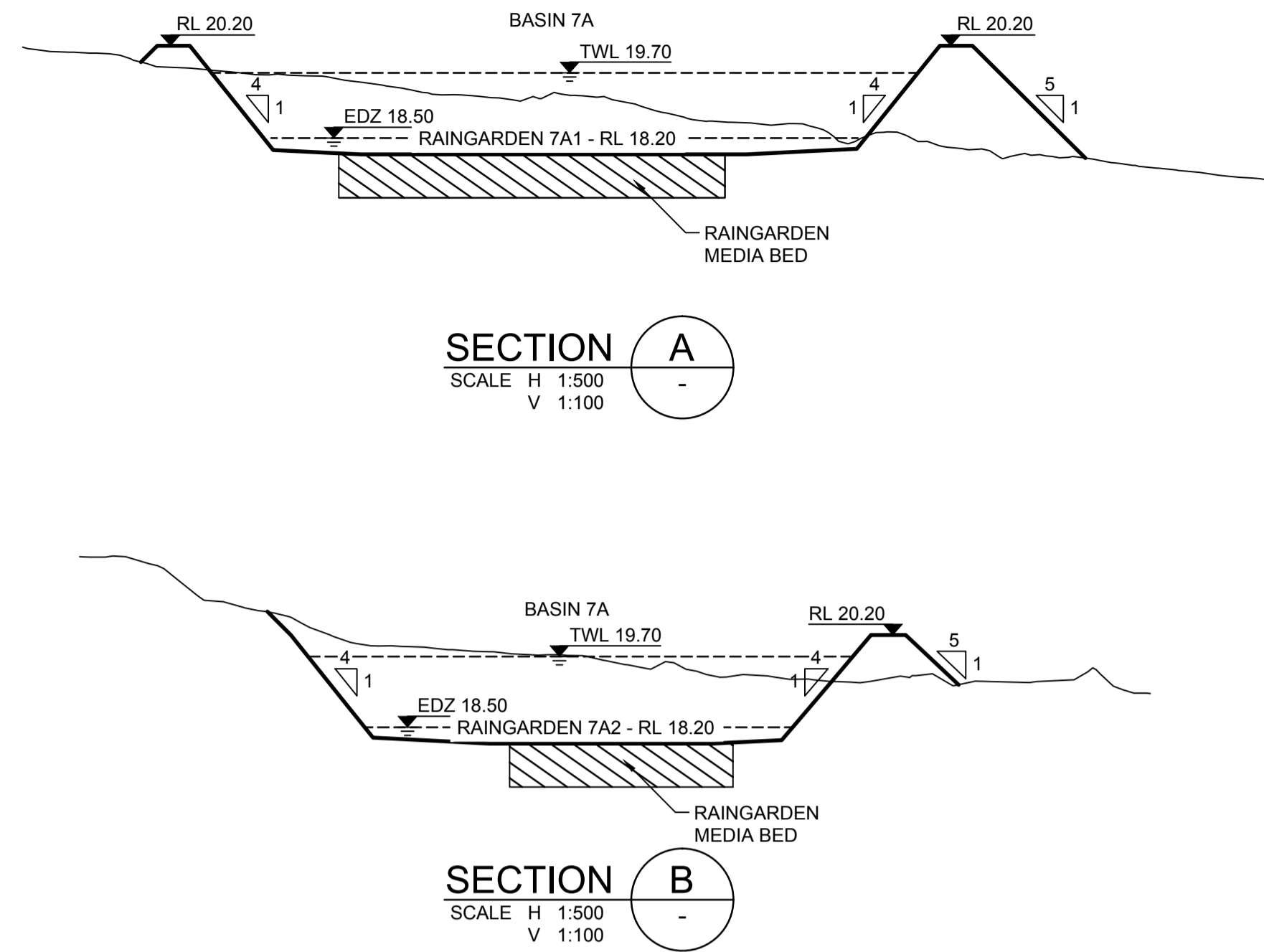
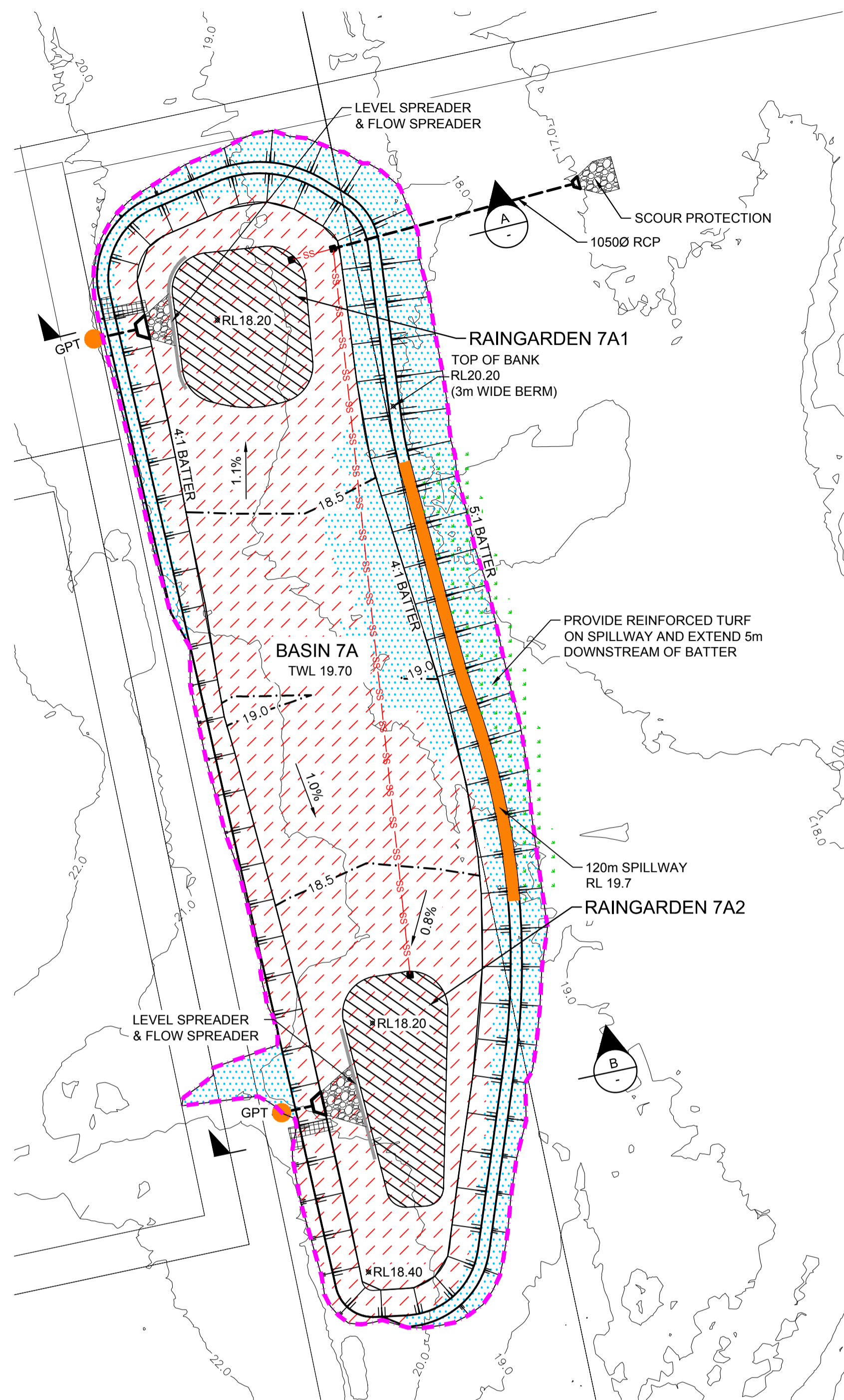
THIS DRAWING MUST NOT BE USED FOR CONSTRUCTION UNLESS SIGNED AS PART OF AN APPROVED CONSTRUCTION CERTIFICATE.

**ADVANCE COPY ONLY**  
NOT FOR CONSTRUCTION

MARSDEN PARK RESIDENTIAL PRECINCT

CHANNEL TC08  
PLAN

PLAN No: 9351/SK320 **C**  
FILE No: 9351SK320  
SHEET SIZE: A1 ORIGINAL



LEGEND	
	EXTENT OF CUT
	EXTENT OF FILL
	RAINGARDEN MEDIA BED
	OSD BASIN SPILLWAY
	REINFORCED TURF
	MAINTENANCE ACCESS & HARDSTAND AREA
	ROCK SCOUR PROTECTION
	STORMWATER DRAINAGE LINE
	GPT AND OUTLET
	SUBSOIL DRAINAGE LINE
	PREDEVELOPMENT PMF EXTENT
	FUTURE RIPARIAN CORRIDOR
	EXTENT OF BLACKTOWN CITY COUNCIL SECTION 94 CONTRIBUTIONS
	LEVEL SPREADER
	FLOW SPREADER
	DESIGN CONTOURS
	EXISTING CONTOURS

BASIN 7A SUMMARY TABLE

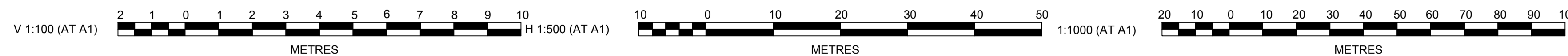
LOCATION	OSD STORAGE VOLUME (m3)	S94 EXTENT OF CUT (m3)	S94 EXTENT OF FILL (m3)	S94 BALANCE (m3)	S94 DISTURBED AREA (m2)
BASIN 7A	17390	-16500	6335	-10165	23750

NOTE: VOLUMES ARE MEASURED BETWEEN THE EXISTING SURFACE AND THE FINAL DESIGN SURFACE AND DO NOT ALLOW FOR TOPSOIL REMOVAL OR RESPREAD

BASIN 7A RAINGARDEN SUMMARY

LOCATION	MEDIA BED SURFACE AREA (m2)
RAINGARDEN 7A1	750
RAINGARDEN 7A2	750
TOTAL	1500

NOTE: RAINGARDEN AREAS SUBJECT TO CHANGE



Plotfile: 7 May 2013 3:39:33 PM File Name: J:\9351\DISK - Concept Sketch Designs\9351\SK321.dwg

AMENDMENT	DES	DRN	CKD	APR	DATE
C	KM	LVD	MS	DC	06/05/13
B	PAS	LVD	JC	DC	27/07/12
A	PAS	LVD	JC	DC	04/07/12

**J. WYNDHAM PRINCE** CONSULTING CIVIL INFRASTRUCTURE ENGINEERS & PROJECT MANAGERS

PO Box 4366 PENRITH WESTFIELD NSW 2750  
P 02 4720 3300 F 02 4721 7638 W www.jwprince.com.au E jwp@jwprince.com.au

AZIMUTH:  
DATUM:  
ORIGIN:

CLIENT:

WINTEN PROPERTY GROUP

THIS DRAWING MUST NOT BE USED FOR CONSTRUCTION UNLESS SIGNED AS PART OF AN APPROVED CONSTRUCTION CERTIFICATE.

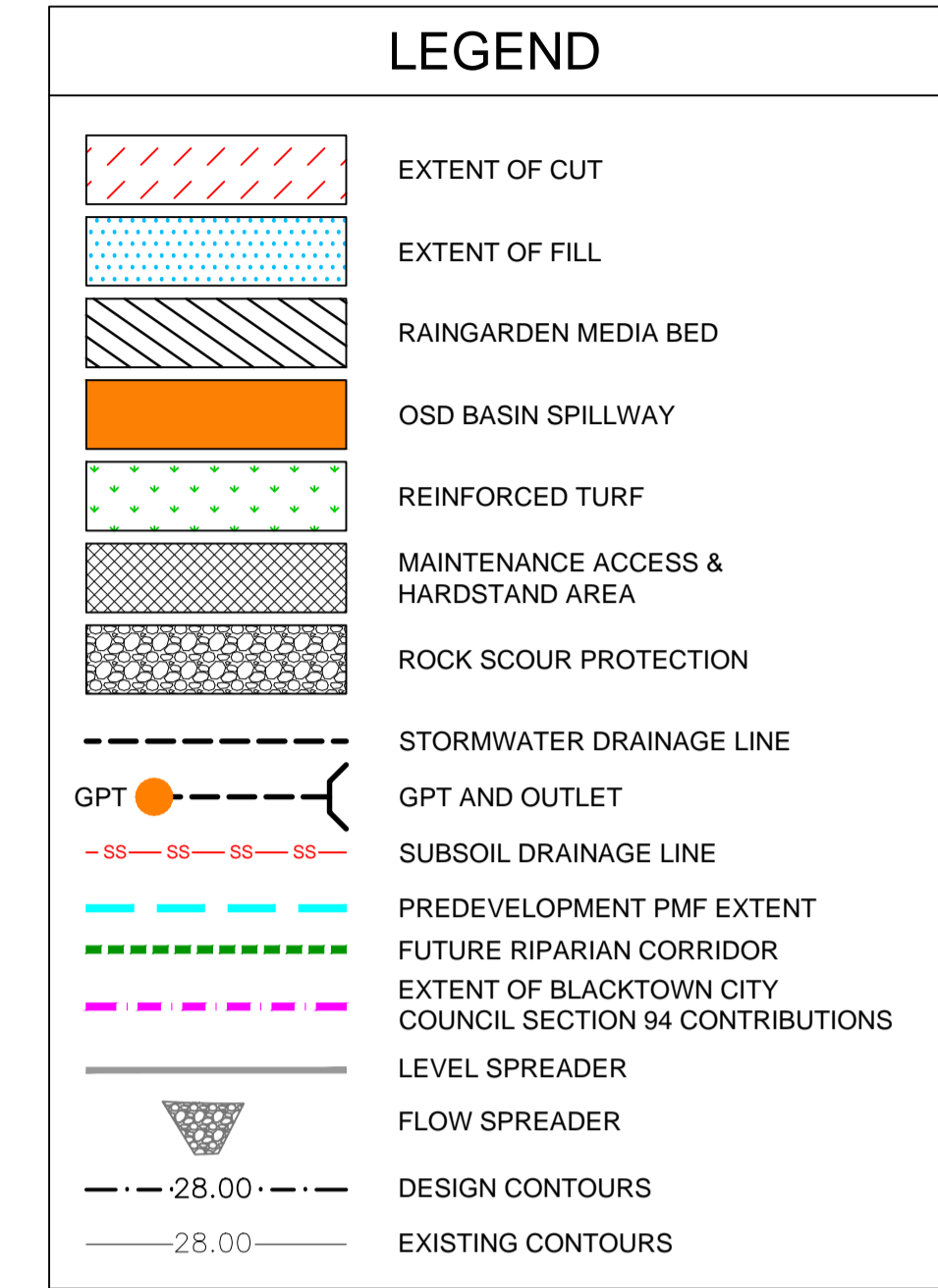
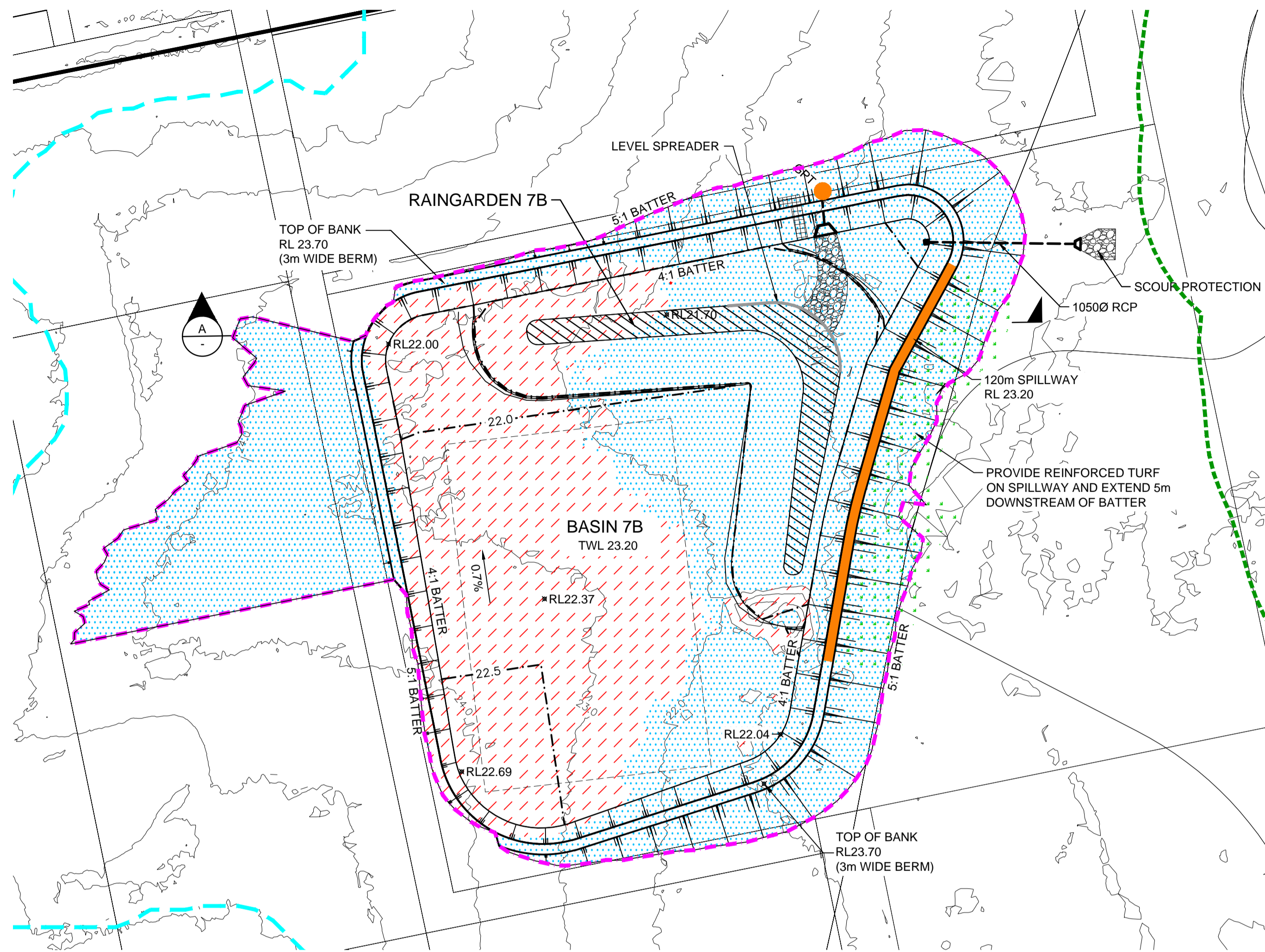
**ADVANCE COPY ONLY**  
NOT FOR CONSTRUCTION

MARSDEN PARK RESIDENTIAL PRECINCT

BASIN 7A  
PLAN AND SECTION

PLAN No:	9351/SK321	C
FILE No:	9351SK321	
SHEET SIZE:	A1 ORIGINAL	





**BASIN 7B SUMMARY TABLE**

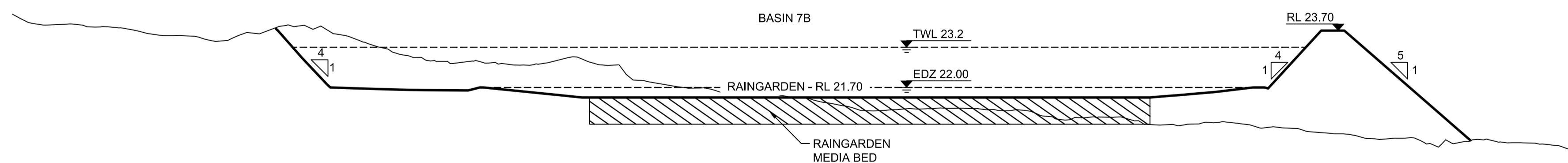
LOCATION	OSD STORAGE VOLUME (m3)	S94 EXTENT OF CUT (m3)	S94 EXTENT OF FILL (m3)	S94 BALANCE (m3)	S94 DISTURBED AREA (m2)
BASIN 7B	20000	-7542	18202	10660	32052

NOTE: VOLUMES ARE MEASURED BETWEEN THE EXISTING SURFACE AND THE FINAL DESIGN SURFACE AND DO NOT ALLOW FOR TOPSOIL REMOVAL OR RESPREAD

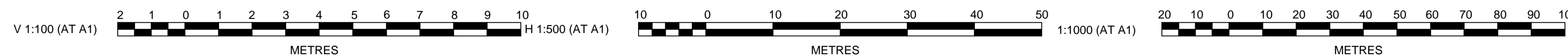
**BASIN 7B RAINGARDEN SUMMARY**

LOCATION	MEDIA BED SURFACE AREA (m2)
RAINGARDEN 7B	1200

NOTE: RAINGARDEN AREAS SUBJECT TO CHANGE



**SECTION A**  
SCALE H 1:500  
V 1:100



Plotfile: 22\_May\_2013\_3:18:56 PM File Name: J:\9351\DISK - Concept Sketch Designs\9351\SK322.dwg

AMENDMENT	DES	DRN	CKD	APR	DATE
C	PAS	LVD	MS	DC	06/05/13
B	PAS	LVD	JC	DC	27/07/12
A	PAS	LVD	JC	DC	04/07/12

**J. WYNDHAM PRINCE** CONSULTING CIVIL INFRASTRUCTURE ENGINEERS & PROJECT MANAGERS

PO Box 4366 PENRITH WESTFIELD NSW 2750  
P 02 4720 3300 F 02 4721 7638 W www.jwprince.com.au E jwp@jwprince.com.au

AZIMUTH:  
DATUM:  
ORIGIN:



THIS DRAWING MUST NOT BE USED FOR CONSTRUCTION UNLESS SIGNED AS PART OF AN APPROVED CONSTRUCTION CERTIFICATE.

**ADVANCE COPY ONLY**  
**NOT FOR CONSTRUCTION**

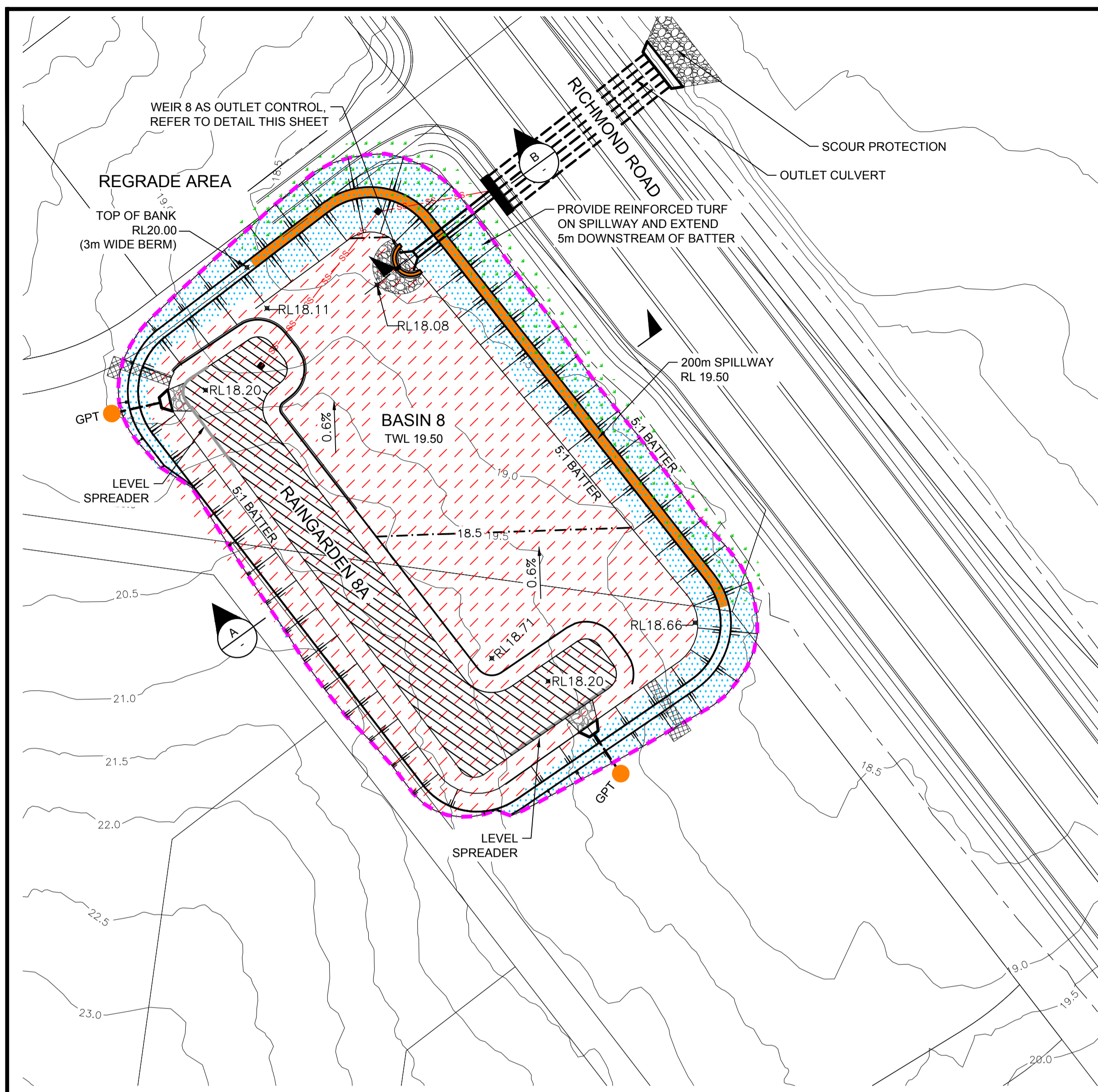
MARSDEN PARK RESIDENTIAL PRECINCT

BASIN 7B  
PLAN AND SECTION

PLAN No:  
**9351/SK322** **D**

FILE No: 9351SK322

SHEET SIZE: A1 ORIGINAL



### LEGEND

- EXTENT OF CUT
- EXTENT OF FILL
- RAINGARDEN MEDIA BED
- OSD BASIN SPILLWAY
- REINFORCED TURF
- MAINTENANCE ACCESS & HARDSTAND AREA
- ROCK SCOUR PROTECTION
- STORMWATER DRAINAGE LINE
- GPT AND OUTLET
- SUBSOIL DRAINAGE LINE
- PREDEVELOPMENT PMF EXTENT
- FUTURE RIPARIAN CORRIDOR
- EXTENT OF BLACKTOWN CITY COUNCIL SECTION 94 CONTRIBUTIONS
- LEVEL SPREADER
- FLOW SPREADER
- DESIGN CONTOURS
- EXISTING CONTOURS

### BASINS 8 SUMMARY TABLE

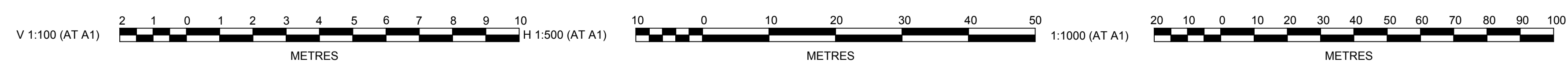
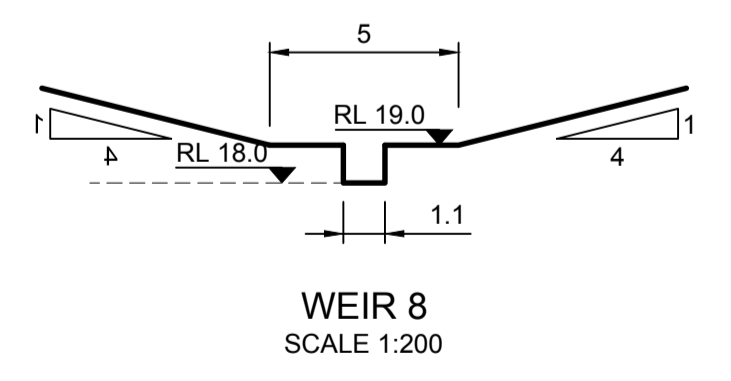
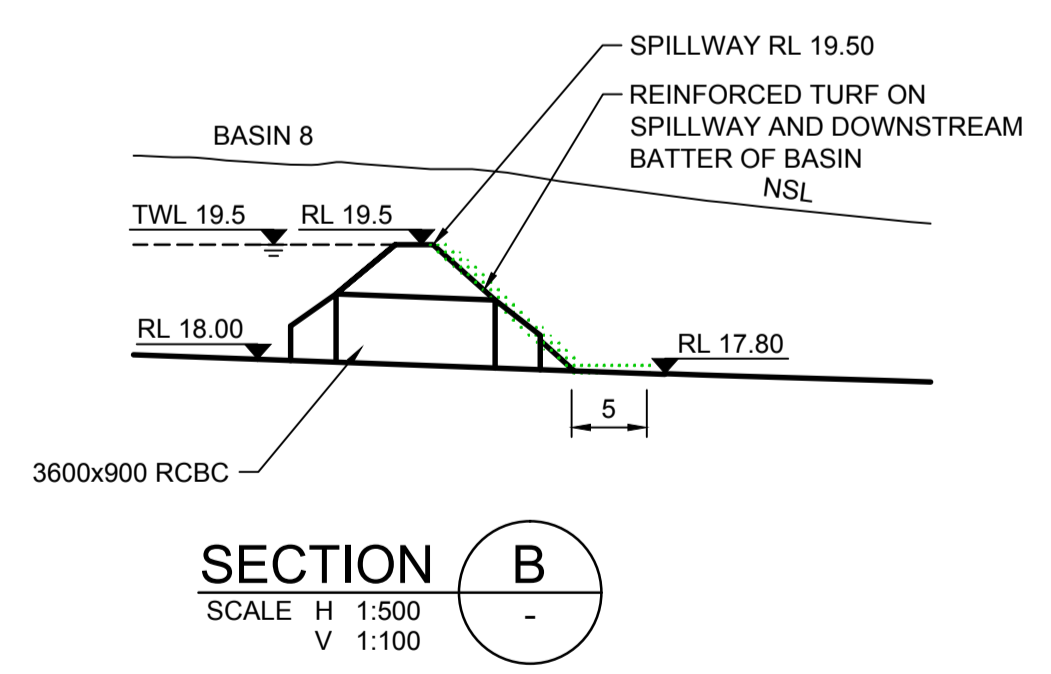
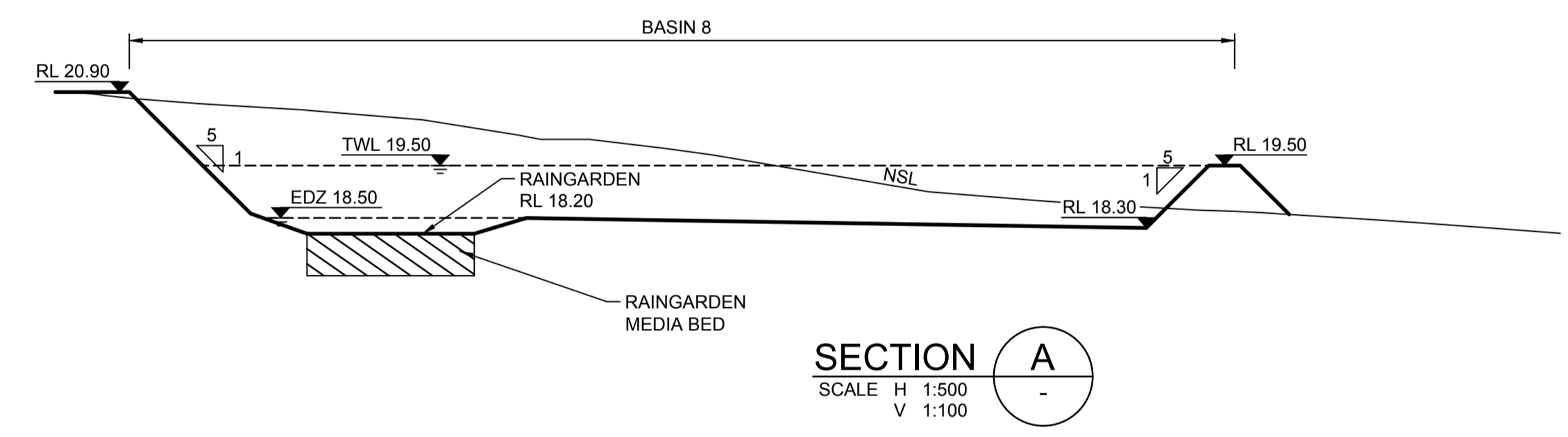
LOCATION	OSD STORAGE VOLUME (m3)	S94 EXTENT OF CUT (m3)	S94 EXTENT OF FILL (m3)	S94 BALANCE (m3)	S94 DISTURBED AREA (m2)
BASIN 8	23345	-16490	4715	-11775	21110

NOTE: VOLUMES ARE MEASURED BETWEEN THE EXISTING SURFACE AND THE FINAL DESIGN SURFACE AND DO NOT ALLOW FOR TOPSOIL REMOVAL OR RESPREAD

### BASINS 8 RAINGARDEN SUMMARY

LOCATION	MEDIA BED SURFACE AREA (m2)
BASIN 8A	3140

NOTE: RAINGARDEN AREAS SUBJECT TO CHANGE



Plotted: 7 May 2013 3:42:54 PM File Name: J:\9351\DISK - Concept Sketch Designs\9351SK323.dwg

AMENDMENT	DES	DRN	CKD	APR	DATE
C	PAS	LVD	MS	DC	06/05/13
B	PAS	LVD	JC	DC	27/07/12
A	PAS	LVD	JC	DC	04/07/12

**J. WYNDHAM PRINCE** CONSULTING CIVIL INFRASTRUCTURE ENGINEERS & PROJECT MANAGERS

PO Box 4366 PENRITH WESTFIELD NSW 2750  
 P 02 4720 3300 F 02 4721 7638 W www.jwprince.com.au E jwp@jwprince.com.au

AZIMUTH:  
 DATUM:  
 ORIGIN:

CLIENT:

THIS DRAWING MUST NOT BE USED FOR CONSTRUCTION UNLESS SIGNED AS PART OF AN APPROVED CONSTRUCTION CERTIFICATE.

**ADVANCE COPY ONLY  
NOT FOR CONSTRUCTION**

MARSDEN PARK RESIDENTIAL PRECINCT

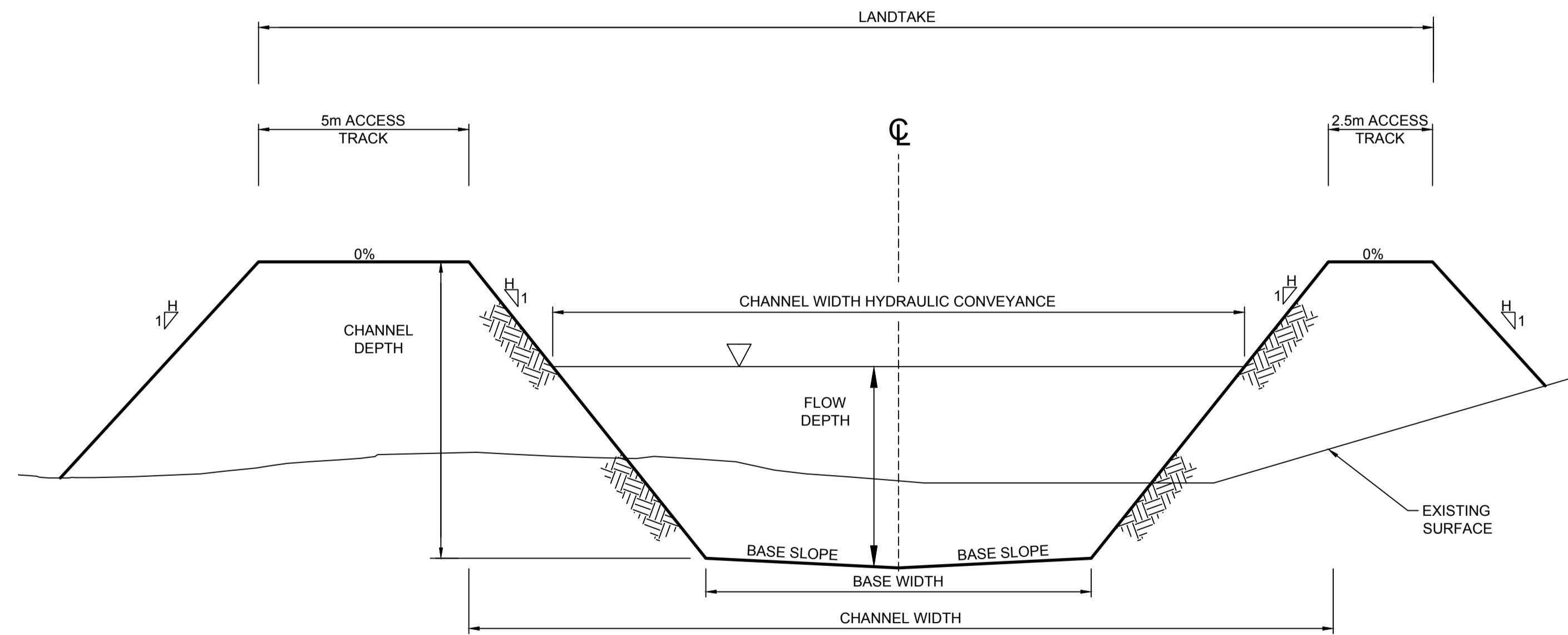
BASINS 8  
PLAN AND SECTION

PLAN No: <b>9351/SK323</b>	<b>C</b>
FILE No: 9351SK323	
SHEET SIZE: A1 ORIGINAL	

CHANNEL SUMMARY TABLE

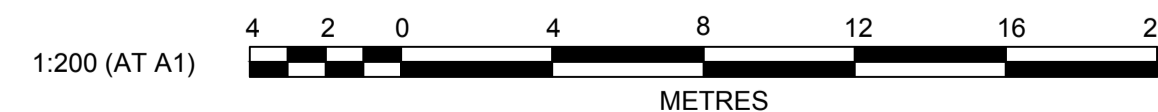
CHANNEL	SEGMENT	START	END	CHANNEL	CHANNEL	BASE	BASE	BATTER	100yr	FLOW	FREEBOARD	CHANNEL	CHANNEL	CHANNEL	MAINTANANCE	PROVISIONS
		CHAINAGE (m)	CHAINAGE (m)	LENGTH (m)	GRADE (%)	SLOPE (%)	WIDTH (m)	SLOPE (H:1V)	DESIGN FLOW (m3/S)	DEPTH (m)	(m)	DEPTH (m)	HYDRAULIC CONVEYANCE (m)	WIDTH (m)	MAJOR ACCESS 5m WIDE	MINOR ACCESS 2.5m WIDE
TC01	XS01	0	245	245	1	2	5.7	4	10	1	0.5	1.5	13.47	17.3	INTERNAL ROAD AT LEFT	INTERNAL ROAD AT RIGHT
	TRANSITION	245	275	30	1	2	-	4	-	1	0.5	1.5	-	-	INTERNAL ROAD AT LEFT	INTERNAL ROAD AT RIGHT
	XS02	275	600	325	1	2	11.5	4	16.4	1	0.5	1.5	19.04	22.6	INTERNAL ROAD AT LEFT	INTERNAL ROAD AT RIGHT
	TRANSITION	600	700	100	1	-	-	4	-	1	0.5	1.5	-	-	INTERNAL ROAD AT LEFT	INTERNAL ROAD AT RIGHT
	XS03	700	1150	450	1	1	40	4	34	1	0.5	1.5	46.40	50.4	INTERNAL ROAD AT LEFT	INTERNAL ROAD AT RIGHT
TC02	TRANSITION	1150	1200	50	0.5	1	40	4	-	-	0.5	-	-	-	INTERNAL ROAD AT LEFT	INTERNAL ROAD AT RIGHT
	XS04	1200	1450	250	0.5	1	40	4	44	1.15	0.5	1.65	47.60	51.6	INTERNAL ROAD AT LEFT	INTERNAL ROAD AT RIGHT
	TRANSITION	1450	1500	50	0.5	1	40	4	-	-	0.5	-	-	-	INTERNAL ROAD AT LEFT	INTERNAL ROAD AT RIGHT
	XS05	1500	1800	300	0.5	1	40	4	70	1.5	0.5	2	50.40	54.4	INTERNAL ROAD AT LEFT	INTERNAL ROAD AT RIGHT
	XS01	0	180	180	0.5	2	20.8	4	18	1	0.5	1.5	27.97	31.2	INTERNAL ROAD AT LEFT	INTERNAL ROAD AT RIGHT
TC03	TRANSITION	180	220	40	0.5	2	-	4	-	-	0.5	-	-	-	INTERNAL ROAD AT LEFT	INTERNAL ROAD AT RIGHT
	XS02	220	410	190	0.5	2	21.3	4	22	1.1	0.5	1.6	29.25	32.3	INTERNAL ROAD AT LEFT	INTERNAL ROAD AT RIGHT
TC04	XS01	270	460	190	0.5	2	14.8	4	14	1	0.5	1.5	22.21	25.6	INTERNAL ROAD AT LEFT	INTERNAL ROAD AT RIGHT
	TRANSITION	220	270	50	0.5	2	-	4	-	1	0.5	1.5	-	-	INTERNAL ROAD AT LEFT	INTERNAL ROAD AT RIGHT
TC05	XS02	90	220	130	0.5	2	19.2	4	17	1	0.5	1.5	26.43	29.7	INTERNAL ROAD AT LEFT	INTERNAL ROAD AT RIGHT
	XS01	420	714	294	0.5	2	9.4	4	10	1	0.5	1.5	17.02	20.6	INTERNAL ROAD AT LEFT	INTERNAL ROAD AT RIGHT
	TRANSITION	327	420	93	0.5	-	-	4	-	1	0.5	1.5	-	-	INTERNAL ROAD AT LEFT	INTERNAL ROAD AT RIGHT
	XS02	130	327	197	0.5	1	35.4	4	31.2	1	0.5	1.5	41.98	46	INTERNAL ROAD AT LEFT	INTERNAL ROAD AT RIGHT
	TRANSITION	80	130	50	0.5	1	-	4	-	1	0.5	1.5	-	-	INTERNAL ROAD AT LEFT	INTERNAL ROAD AT RIGHT
TC06	XS03	0	80	80	0.5	1	41	4	35	1	0.5	1.5	47.36	51.4	INTERNAL ROAD AT LEFT	INTERNAL ROAD AT RIGHT
	TRANSITION	380	420	40	0.5	2	-	4	-	1	0.5	1.5	-	-	INTERNAL ROAD AT LEFT	INTERNAL ROAD AT RIGHT
TC07	XS02	420	510	90	0.5	2	24.1	4	20	1	0.5	1.5	31.14	34.2	INTERNAL ROAD AT LEFT	INTERNAL ROAD AT RIGHT
	XS01	0	510	510	1	2	10.2	4	15	1	0.5	1.5	17.79	21.4	INTERNAL ROAD AT LEFT	INTERNAL ROAD AT RIGHT
TC08	XS01	0	170	170	0.5	1	18.4	4	21.5	1.1	0.5	1.63	26.46	30	INTERNAL ROAD AT LEFT	INTERNAL ROAD AT RIGHT
	TRANSITION	170	200	30	0.7	1	18.2	4	-	-	0.5	1.63	-	30	INTERNAL ROAD AT LEFT	INTERNAL ROAD AT RIGHT
	XS02	200	320	120	0.7	1	18.2	4	27.4	1.15	0.5	1.63	26.67	30	INTERNAL ROAD AT LEFT	INTERNAL ROAD AT RIGHT
	TRANSITION	320	350	30	0.7	1	-	4	-	-	0.5	-	-	30	INTERNAL ROAD AT LEFT	INTERNAL ROAD AT RIGHT
TC09	XS03	350	600	250	0.7	1	15.4	4	32.5	1.3	0.5	1.81	25.18	30	INTERNAL ROAD AT LEFT	INTERNAL ROAD AT RIGHT
	XS01	0	150	150	0.5	2	9.4	4	10	1	0.5	1.5	17.02	20.7	INTERNAL ROAD AT LEFT	INTERNAL ROAD AT RIGHT
	TRANSITION	150	180	30	0.5	2	-	4	-	1	0.5	1.5	-	-	INTERNAL ROAD AT LEFT	INTERNAL ROAD AT RIGHT
TC10	XS02	180	275	95	0.5	2	14.8	4	14	1	0.5	1.5	22.21	25.6	INTERNAL ROAD AT LEFT	INTERNAL ROAD AT RIGHT

NOTE: ALL FLOWS ARE POST CLIMATE CHANGE



CHANNEL TYPICAL SECTION

1:200 H  
1:40 V



Plotfile: 7 May 2013 3:43:08 PM File Name: J:\9351\DISK - Concept Sketch Designs\9351\SK324.dwg

C	POST EXHIBITION REVISED BASIN DESIGN	KM	LVD	MS	DC	06/05/13
B	ISSUED FOR EXHIBITION	PAS	LVD	JC	DC	27/07/12
A	ISSUED FOR EXHIBITION	PAS	LVD	JC	DC	04/07/12
	AMENDMENT	DES	DRN	CKD	APR	DATE

**J. WYNDHAM PRINCE** CONSULTING CIVIL INFRASTRUCTURE ENGINEERS & PROJECT MANAGERS

PO Box 4366 PENRITH WESTFIELD NSW 2750  
P 02 4720 3300 F 02 4721 7638 W www.jwprince.com.au E jwp@jwprince.com.au

AZIMUTH:  
DATUM:  
ORIGIN:

CLIENT:

THIS DRAWING MUST NOT BE USED FOR CONSTRUCTION UNLESS SIGNED AS PART OF AN APPROVED CONSTRUCTION CERTIFICATE.

**ADVANCE COPY ONLY**  
NOT FOR CONSTRUCTION

MARSDEN PARK RESIDENTIAL PRECINCT

CHANNEL TYPICAL SECTION & CHANNEL SUMMARY

PLAN No: 9351/SK324 **C**

FILE No: 9351SK324

SHEET SIZE: A1 ORIGINAL