

APPENDIX E – Figures



**J. WYNDHAM PRINCE**

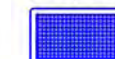
CONSULTING CIVIL INFRASTRUCTURE ENGINEERS  
& PROJECT MANAGERS  
PO Box 4366 PENRITH WESTFIELD NSW 2750  
P 02 4720 3300 www.jwprince.com.au  
F 02 4721 7638 E wp@jwprince.com.au

**LEGEND**

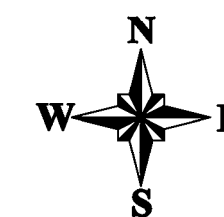
Precinct Boundary



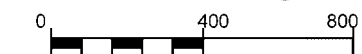
Proposed Detention Basin



Basins	Detention Volume (m <sup>3</sup> )
Basin A1	23400
Basin A3	10200
Basin 2	35000
Basin 3	121500
Basin 4	59600
Basin 5A	13600
Basin 5B	14800
Basin 5C	32500
Basin 6A	11300
Basin 6B	13800
Basin 7A	17600
Basin 7B	19200
Basin 8	15300
<b>Totals</b>	<b>387800</b>



Scale 1: 20,000 @ A3

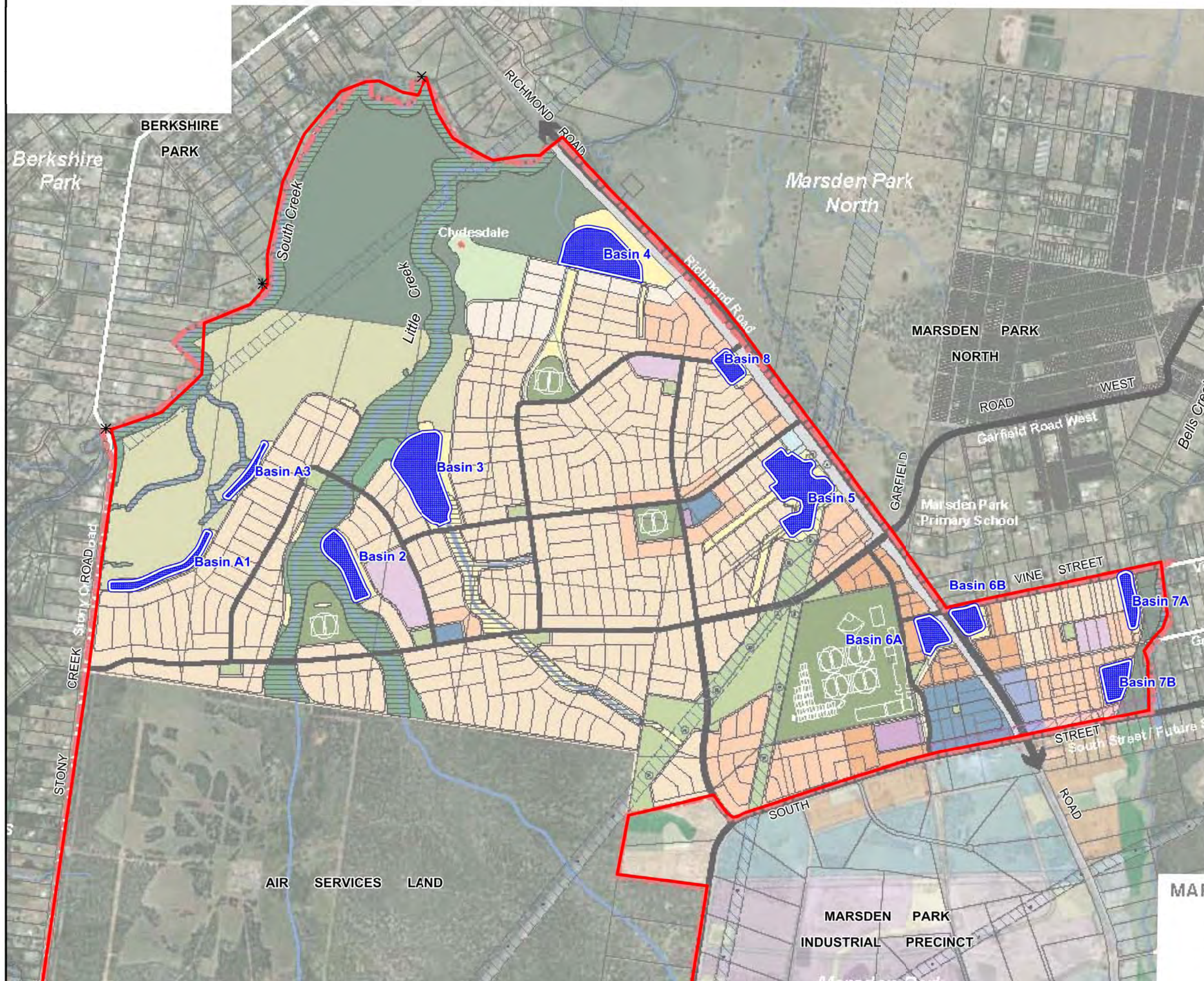


**Figure 5.1**

**Marsden Park Residential Precinct**

**Water Cycle Management Plan**

**Detention Basins**





**J. WYNDHAM PRINCE**

CONSULTING CIVIL INFRASTRUCTURE ENGINEERS  
& PROJECT MANAGERS  
PO Box 4366 PENRITH WESTFIELD NSW 2750  
P 02 4720 3300 W www.jwprince.com.au  
F 02 4721 7638 E wp@jwprince.com.au

**LEGEND**

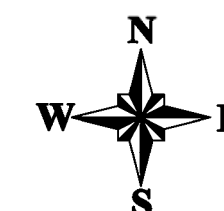
Precinct Boundary



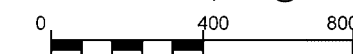
Water Quality Treatment Device

- Raingarden
- Baseflow Management Device

Catchment Designation	Total Treated Catchment Area (ha)	Raingarden Area (m <sup>2</sup> )
A1	27.2	4130
A2	14.1	380
A3	14.5	1450
A4	3.8	380
B1	18.2	1820
B2	9.8	980
B3	9.6	960
1	20.2	1400
2	31.6	3160
3 Basin	12.3	1600
3F	5.7	570
4 Basin	132.9	1600
5A	12.8	1700
5B	9.9	2620
5C	3.4	2135
5B-OS	11.2	600
5D (Playing Fields)	33.1	1600
6A	6.0	1375
6B	2.5	250
6C	3.4	50
6E (Playing Fields)	17.6	1000
7A	15.4	1500
7B	12.1	1200
8A	26.7	3140
<b>Total</b>		<b>35220</b>



Scale 1: 20,000 @ A3

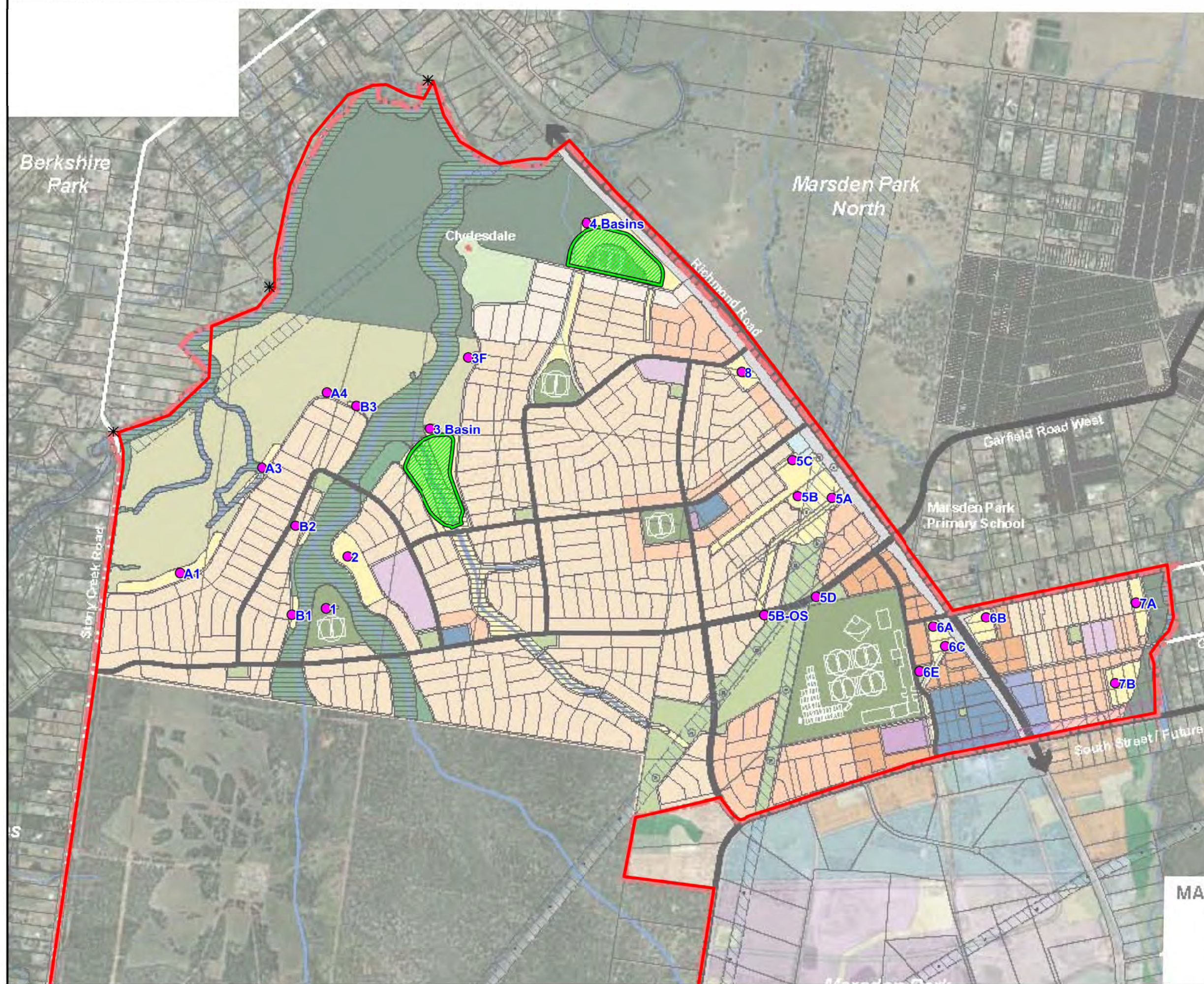


**Figure 5.2**

**Marsden Park Residential Precinct**

**Water Cycle Management Plan**

**Water Quality Treatment Devices**





**J. WYNDHAM PRINCE**

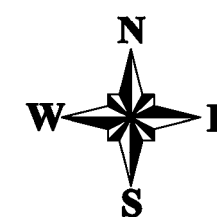
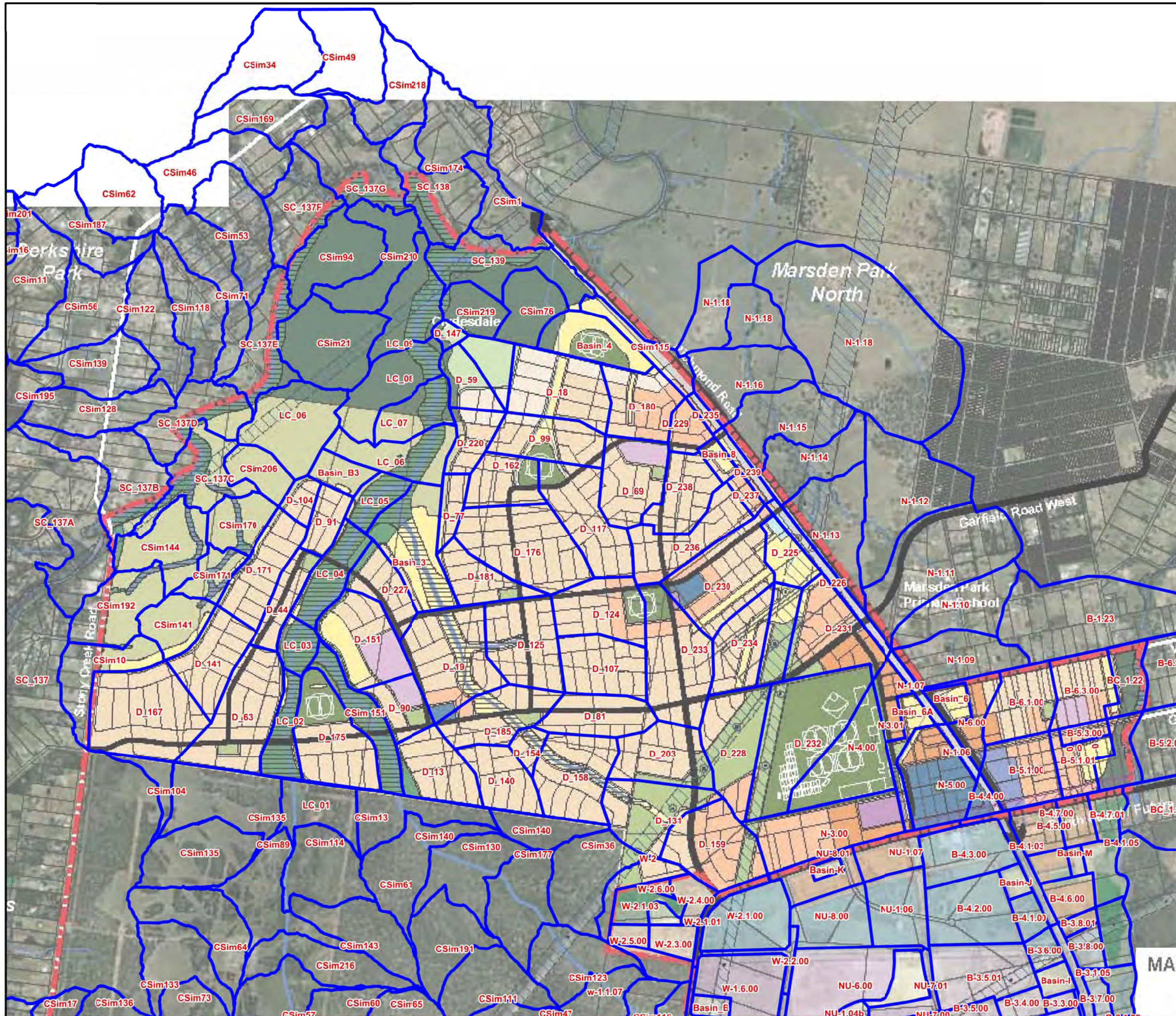
CONSULTING CIVIL INFRASTRUCTURE ENGINEERS  
& PROJECT MANAGERS  
PO Box 4366 PENRITH WESTFIELD NSW 2750  
P 02 4720 3300 W www.jwprince.com.au  
F 02 4721 7638 E jwp@jwprince.com.au

**LEGEND**

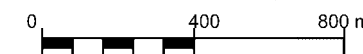
Precinct Boundary



Developed Catchment Boundary



Scale 1: 20,000 @ A3



**Figure 5.3**

**Marsden Park Residential Precinct**



**Developed Catchment Layout**

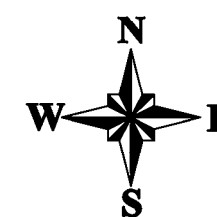
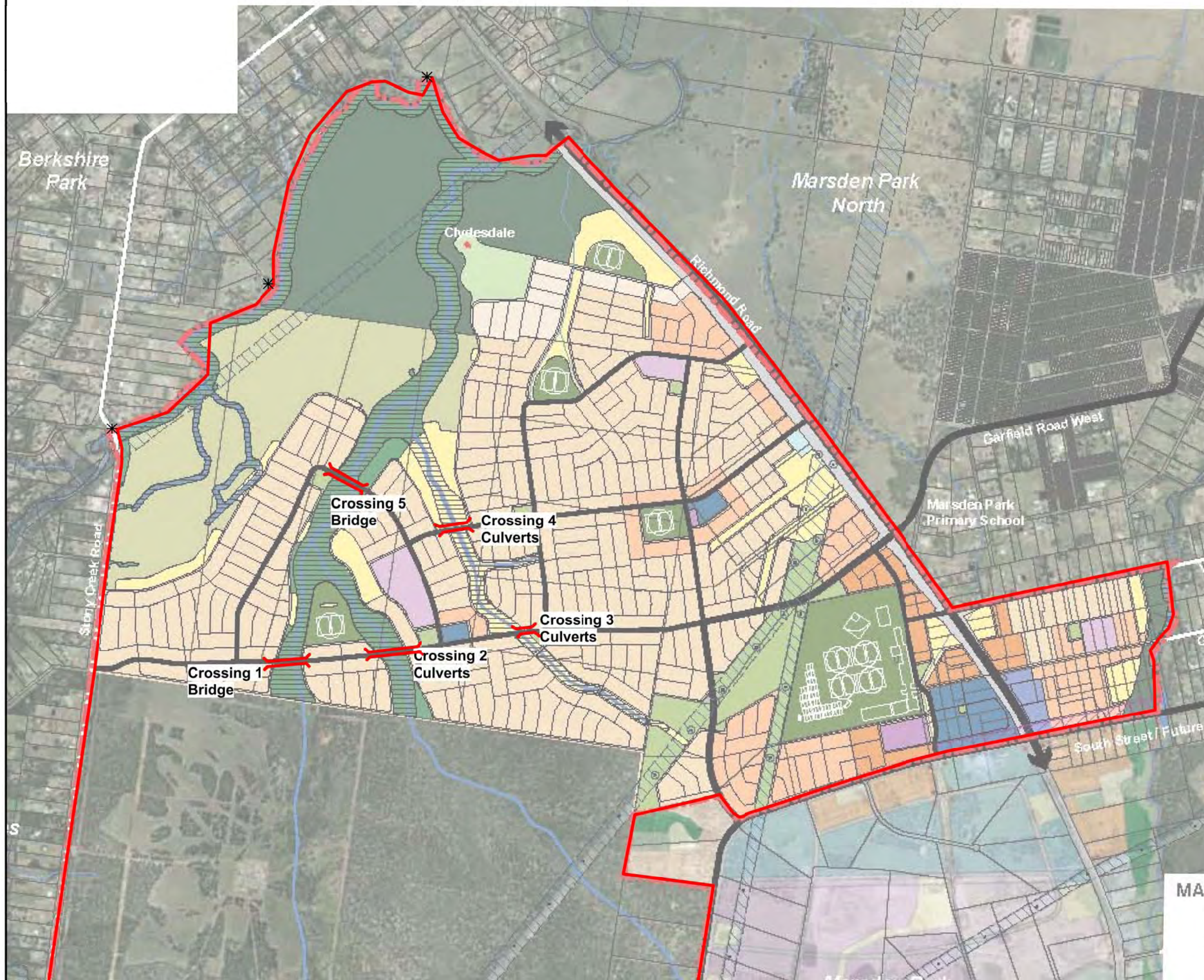


**J. WYNDHAM PRINCE**

CONSULTING CIVIL INFRASTRUCTURE ENGINEERS  
& PROJECT MANAGERS  
PO Box 4366 PENRITH WESTFIELD NSW 2750  
P 02 4720 3300 www.jwprince.com.au  
F 02 4721 7638 E wp@jwprince.com.au

**LEGEND**

-  Precinct Boundary
-  Bridge or Culvert Watercourse Crossing with Label
- Crossing 3**



Scale 1: 20,000 @ A3



**Figure 5.4**

**Marsden Park Residential Precinct**

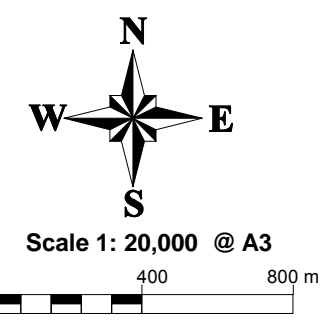
**Water Cycle Management Plan**

**Crossing Structures**



**LEGEND**

Depth (m)	
	0.0 to 0.5
	0.5 to 1.0
	1.0 to 2.0
	2.0 to 3.0
	3.0 to 4.0
	4.0 to 5.0
	5.0 to 7.0
	7.0 to 10.0
	10.0 +
	17.5 Flood Level (mAHD)
	Precinct Boundary



**Figure 6.1**  
**Marsden Park Residential Precinct**  
 Peak 2 year ARI  
 No Tailwater  
 Existing Condition  
 Flood Depth and Level Plan

