



2018

***Five Million
Trees for
Greater
Sydney***

**Local Government
Grant Program**

**2018-19
Guidelines**



Acknowledgement

**NSW Department of Planning and Environment
acknowledges the Traditional Custodians of the land
and pays respect to all Elders past, present and future.**

To view an electronic version in PDF format,
visit www.planning.nsw.gov.au

© Crown Copyright 2018

Department of Planning and Environment
November 2018

Disclaimer

While every reasonable effort has been made to ensure that this document is correct at the time of printing, the State of New South Wales, its agents and employees, disclaim any and all liability to any person in respect of anything or the consequences of anything done or omitted to be done in reliance or upon the whole or any part of this document.

Copyright Notice

In keeping with the Department of Planning and Environment's commitment to encourage the availability of information, you are welcome to reproduce the material that appears in this Guideline for personal, in-house or non-commercial use without formal permission or charge. All other rights are reserved. If you wish to reproduce, alter, store or transmit material appearing in this Guideline for any other purpose, a request for formal permission should be directed to:

Department of Planning and Environment
GPO Box 39
Sydney NSW 2001

You are required to acknowledge that the material is provided by the Department or the owner of the copyright as indicated in this Guideline and to include this copyright notice and disclaimer in any copy. You are also required to acknowledge the author (the Department of Planning and Environment) of the material as indicated in this Guideline.

Forewords



The New South Wales Government is committed to creating greener and healthier communities across the Greater Sydney Region. We know that creating a greener city is about more than creating tree-lined streets and shelter for our open spaces. It's also about our health, our environment and our economy.

In a word, it's all about one thing: liveability.

That's why we are investing \$37.5 million into Five Million Trees – our coordinated plan to boost Greater Sydney's urban tree canopy to 40%. By increasing our urban tree canopy we are not only providing much needed shelter from heat waves, we are supporting native wildlife, reducing carbon dioxide in our air and promoting a stronger connection with nature in our city.

It's all part of the lasting-legacy we want to pass onto the next generation of Sydneysiders. But like all big endeavours, we know we can't get there on our own. We need your help and local expertise to turn our ambition into a reality. The guidelines for how we envisage our partnership with you are outlined in this document.

Working together, I know that we can deliver exceptional green, open spaces for the people of Greater Sydney.

Anthony Roberts
Minister for Planning and Housing



I am very pleased to launch the program guidelines for the Five Million Trees (5MT) Grants – a landmark program to partner with local Councils to promote tree planting in public spaces across Greater Sydney.

Whether it's a street, a park, or a pedestrian plaza, 5MT is our commitment to match you, dollar-for-dollar, to invest in tree planting activities in your council area. With \$6 million dollars in grant funding on offer, this program represents a major part of a broader state government initiative to boost Greater Sydney's urban tree canopy to 40%.

5MT is yet another way the New South Wales Government is working to expand Sydney's ever-growing urban forest. The hallmark of this program will be partnership and collaboration with local Councils and local communities – particularly those living in areas with a urban tree canopy of less than 15%.

By working together on long-term solutions for the communities we are here to serve, we can ensure that we are creating world-class places for Sydneysiders to live, work and play for years to come.

If you have any questions about the program or these guidelines, please don't hesitate to contact Linda Smith, Office of Open Space and Parklands on 02 8275 1084 or at 5milliontrees@planning.nsw.gov.au

Fiona Morrison
Commissioner for Open Space and Parklands

1

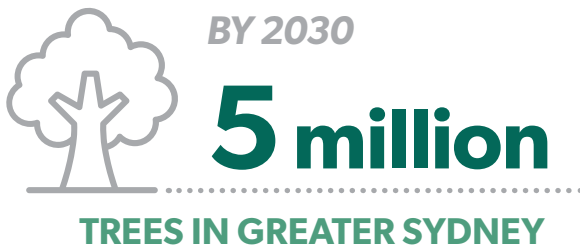
Introduction

Glue.
STORY



○ **Five Million Trees for Greater Sydney Program**

The target of the 5MT Program is to plant five million trees across Greater Sydney by 2030.



Five Million Trees Program

Five Million Trees for Greater Sydney (5MT) program was created to expand the tree canopy across all 33 Local Government Areas (LGAs) within Greater Sydney. It is about planting more trees in our streets, parks, private yards, neighbourhoods and schools under the goal of increasing Sydney's urban tree canopy. Objectives of 5MT include:

- Five million more trees planted in Greater Sydney by 2030
- Increase Greater Sydney's urban tree canopy cover to 40%
- Ameliorate climate extremes by provide shade and cooling urban areas through tree planting
- Creating a healthier, more liveable and greener Greater Sydney.

The 5MT Grants Program has been created to support and increase tree planting in all LGAs across Greater Sydney.

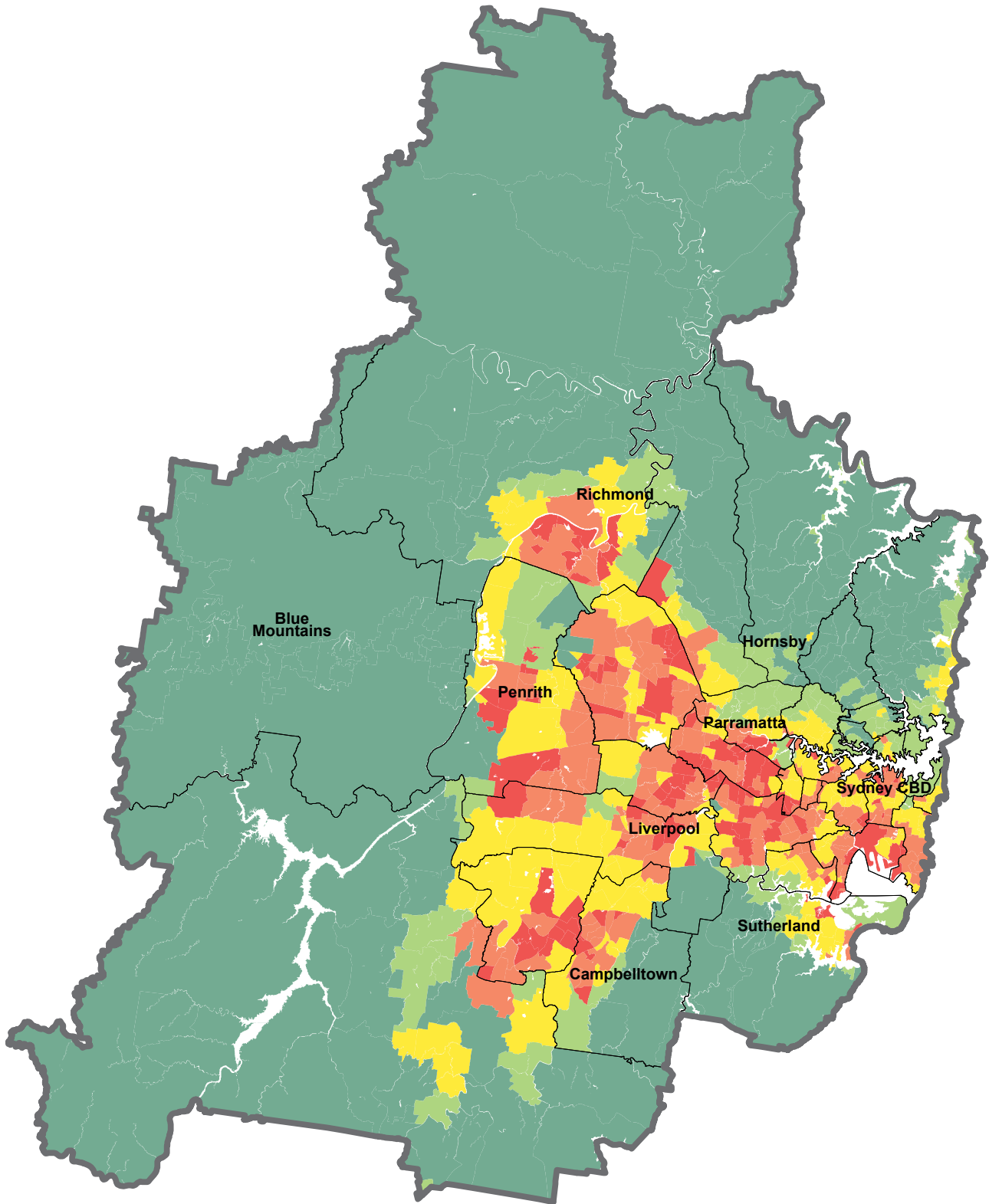
Through collaboration with local and state government, organisations, community groups, schools and residents, the 5MT initiative will see millions of trees planted in Greater Sydney by 2030.

The tree canopy of Greater Sydney

Tree canopy refers to all trees, on public and private land. This comprises of a variety of trees types such as exotics, natives, deciduous and evergreens, occupying a range of environments from busy city centers to retail streets to suburbs. Tree canopy can be found within public parks, squares and plazas, street verges, rail corridors, riparian corridors, campuses and private gardens.

Tree canopy provides a critical role in creating healthy cities, as it provides shade and shelter, improves air quality, absorbs carbon and run off, cools local environments and protects biodiversity. Trees create attractive places, providing seasonal variation and creating memorable landmarks.

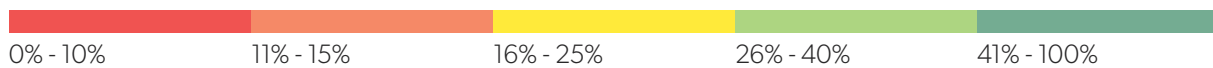
Analysis of the tree canopy cover within Greater Sydney (2018)



Greater Sydney Boundary

Local Government Area

Tree canopy % per suburb



Urban tree canopy benefits

+ Reduce energy consumption

Trees reduce energy consumption and carbon emissions through shading, therefore reinforces less use of air-conditioning. Trees can provide savings in electricity by 12-15%. The value of savings every 100,000 trees in electricity and water use per year is \$1.45 million.

+ Biodiversity

Trees cater for urban animals through food and habitat.

+ Increase land and property value

A 10% increase in street tree canopy can increase the value of a property by an average of \$50,000. The value of one tree to a residential property is approximately \$5,000.

+ Urban heat island

Trees reduce energy consumption by mitigating the urban heat island effect. Shading of trees can reduce temperature by 8 °C.

+ Stormwater reduction

Trees can filter pollutants from stormwater through the canopy, trunks and root.

+ Placemaking

The character and history of a space/ suburb can be defined by street trees.

+ Reduces air pollution

Trees improve the quality of air we breathe. The total carbon dioxide sequestered by 100,000 trees is 4,771,000t.

+ Strengthens health

Trees promote feelings of relaxation and well-being, e.g. hospital patients are known to recover faster and with less complications when situated in rooms with a view of trees.

Data Source: Gardening With Angus | Bringing You The Best In Australian Plants, <https://www.gardeningwithangus.com.au> (2018). Moore, G.M. (2016). The economic value of trees in the urban forest as climate changes. AECOM. (2017) Green Infrastructure vital step brilliant Australian Cities Report. City of Botany Bay. The Benefit of Tress, <http://www.botanybay.nsw.gov.au> (2018).

2

Program Overview for 2018-19

Objectives and priorities

The program

The 2018/19 5MT Grant Program is structured to support all Councils in Greater Sydney to plant trees and increase tree canopy cover in their communities. Planting more trees will create a healthier, more liveable and greener Greater Sydney. The 5MT Grant Program will also support Councils with funding to care and manage trees through their establishment period so that they have the best possible chance of survival.

The Office of Open Space and Parklands (OSAP) has undertaken an extensive mapping exercise of the Greater Sydney Region and has measured the canopy cover of each suburb in 2018 (Appendix A). This data will act as the baseline for canopy measure and will inform the priority areas for this program.

The priorities for the 5MT Grant Program are to support Council's expanding tree canopy in those suburbs that have the lowest existing canopy cover.

- Suburbs with 10% or less canopy cover in 2018 will be allocated 30% of available grant funding in 2018/19.
- Suburbs with 11% - 15% canopy cover in 2018 will be allocated 25% of available grant funding in 2018/19.
- Suburbs with 16% - 25% canopy cover in 2018 will be allocated 20% of available grant funding in 2018/19.
- Suburbs with 26% - 40% canopy cover in 2018 will be allocated 15% of available grant funding in 2018/19.
- Suburbs with more than 40% canopy cover in 2018 will be allocated 10% of available grant funding in 2018/19.

Eligibility

All Councils in the Greater Sydney Region are eligible to apply -

Bayside Council, Blacktown City Council, Blue Mountains City Council, Burwood Council, Camden Council, Campbelltown City Council, City of Canada Bay, Canterbury-Bankstown Council, Cumberland Council, Fairfield City Council, Georges River Council, Hawkesbury City Council, Hills Shire Council, The Hornsby Shire Council, The Council of the Municipality of Hunters Hill, Inner West Council, Ku-ring-gai Council, Lane Cove Municipal Council, Liverpool City Council, Mosman Municipal Council, North Sydney Council, Northern Beaches Council, City of Parramatta Council, Penrith City Council, Randwick City Council, City of Ryde Council, Strathfield Municipal Council, Sutherland Shire Council, City of Sydney, Waverley Shire Council, City of Willoughby, Wollondilly Shire Council, Woollahra Municipal Council.

Councils outside of Greater Sydney are not eligible to apply.

Funding

In 2018/19, \$6 million in funding is available for the 5MT Grants Program. This funding will be available to eligible Councils via a competitive grant process where Councils will be required to match the funding granted on a dollar for dollar basis. In-kind contributions may be included.

Funds obtained through the Program will be eligible for use on the purchase and planting of trees, whilst also working towards the first-year establishment of planted trees. Proof of success of planting will be required.

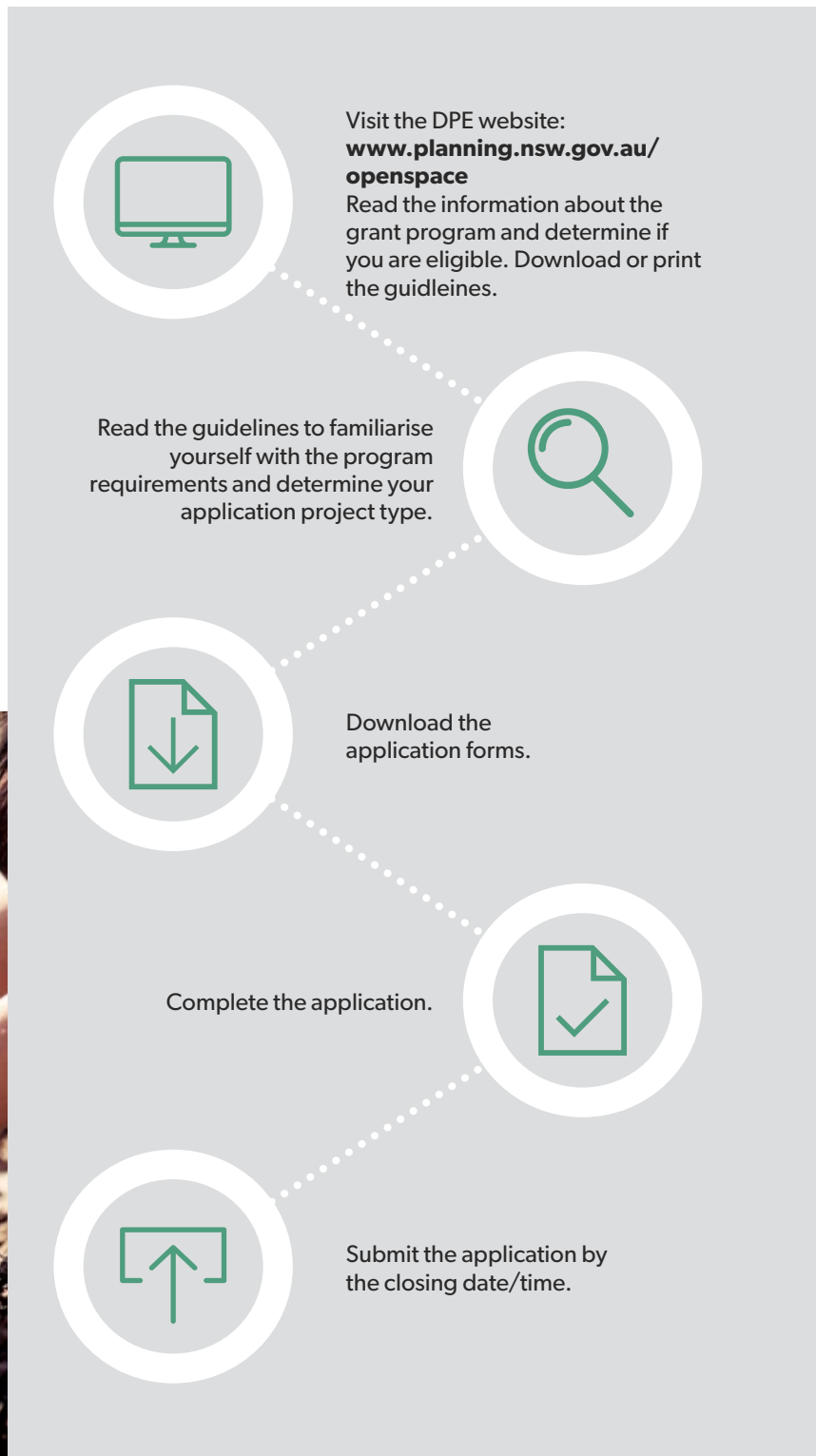
How to apply

Councils can submit an application for funding via the application portal on the Department of Planning and Environment (DPE) website, www.planning.nsw.gov.au/openspace

OSAP are available to provide information to potential applicants on interpretation of these guidelines, including types of projects eligible for funding. They can also provide advice on the online application process.

An Independent Grants Assessment Panel will assess all applications, and OSAP staff will not be able to edit or correct any applications, to maintain a fair and equitable process. OSAP staff will be available to provide feedback on unsuccessful grant applications.

For inquiries or more information contact Linda Smith, Office of Open Space and Parklands on on 02 8275 1084 or email 5milliontrees@planning.nsw.gov.au.



Grant process overview

The assessment process and timeframes for Round 1 of the 5MT Grants Program 2018-19 are outlined below.

November - December 2018	Opening of 2018-19 grants round	Councils notified. Online applications portal open.
January 2019 - February 2019	Independent panel assessment (Finance and governance committee meeting)	Score projects against criteria. Review recommendations and endorse successful projects. Councils formally advised on outcome of applications. Grant invitations sent to councils. Ministerial announcement of successful projects
March 2019 onwards		Deed of Agreements formalised with councils. Ongoing monitoring of projects commences.

Five Million Trees application process

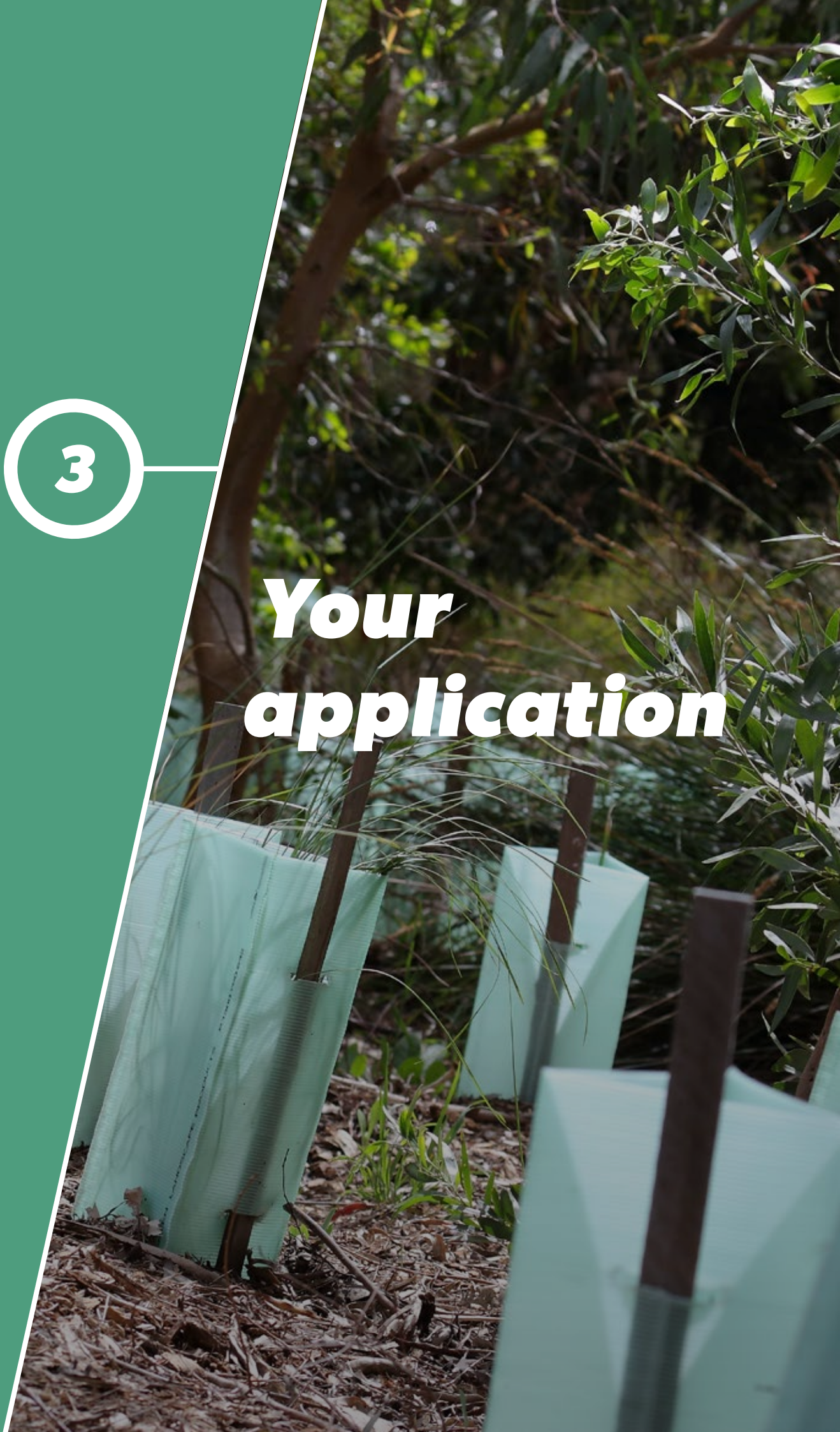
Applications close 3pm (AEST) Friday, 21 December 2018.

If you have questions or enquiries, please contact Linda Smith, Office of Open Space and Parklands on 02 8275 1084 or email 5milliontrees@planning.nsw.gov.au.

- Councils will submit applications for funding via the application portal.
- The application must include a signed cover letter from the applying Council's General Manager.
- Only submit the relevant pages or sections of reports referred to in your application. It is preferred that you do not attach reports in their entirety.
- All applicants will be notified via email or letter of the outcome of the assessment process.
- The decision by the Independent Grants Assessment Panel is final and there are no avenues for appeal.

3

Your application



Projects eligible for program funding

To be eligible for funding, applications must demonstrate the following:

- 1. Matched funding** – Grant funding must be matched dollar for dollar with cash funding. In kind contributions may be included.
- 2. Canopy Expansion** – Projects must demonstrate the extent of tree canopy expansion that will be realised.
- 3. Tree Management Plan** – Projects must demonstrate how trees will establish and grow successfully.

Type of projects that are eligible for funding under the 5MT Grants Program are limited to capital projects where trees will be planted. Planning and strategy projects are not eligible under this program.

.....
Capital works that will be considered include:

- street tree planting
- tree planting projects in new and existing open space areas that include but are not limited to:
 - corridors
 - parks
 - plazas
 - community tree planting programs
 - carparks.

Infrastructure to support tree planting such as the following may also be considered as part of the grants:

- tree pits
- soil/mulch
- structural soil cells or similar
- root barriers
- irrigation
- drainage
- tree guards
- root ball support
- tree grates, vertical guards and other protective measures.

The following works are **not eligible** for funding under this program:

- bush regeneration/revegetation.
- funding of personnel or staff positions.

The Council or their consultants are responsible for providing the necessary labour, plant and materials, management and supervision – this could include working cooperatively with the community and relevant government agencies.





Assessment of eligible applications

If eligible, applications will be assessed by an independent panel against Climate Change Fund objectives, Greater Sydney District-specific priorities and the extent to which the project will expand the tree canopy cover.

Criteria used to assess applications are:

Merit

- ability to ensure longevity of the canopy expansion
- number of trees to be planted and the proposed canopy cover increase
- methodology to ensure establishment of the trees
- the existing urban tree canopy cover (%) across the suburb of the tree planting project.
- clear vision for the project
- include implementation strategies for evaluating and measuring results
- outline of project suitability

Engagement

- strategies for ongoing engagement of the community, participants and/or audience

Viability

- project is well-planned with appropriate approvals and risk management in place
- realistic timelines to complete the project
- strategic partnerships and collaborations

Budget

- detailed and accurate budget
 - provide value for money and is realistic for the scale and impact of the project
 - demonstrate an appropriate use of public funds
 - include the appropriate provision for contingencies
 - include insurance and other liabilities.
-

Project management

Councils are asked to nominate a project manager for each project and to notify the OSAP team in writing of any changes in project management. Councils are responsible for project management and budgetary control.

Grant funding will lapse after 18 months (excluding an establishment period) unless there is prior approval for extension.

Reporting and monitoring

As part of the Funding Agreement, the successful applicants are required to submit project progress reports on a quarterly basis (three-monthly).

Progress reports may include photographs and evidence of progress at quarterly intervals, or at project milestones as agreed to/approved by the Program Administrator.

The progress report template is available on the DPE website, or by contacting Linda Smith, Office of Open Space and Parklands on 02 8275 1084 or email 5milliontrees@planning.nsw.gov.au.



-
- Each request for payment of an installment that is made to OSAP will include an updated status report on the project, including the invoiced amounts for approval by the Program Administrator.
 - The final payment equivalent to 10% of grant funding will be provided upon completion of an 18 months establishment period and evidence of tree survival.
 - All trees planted are to be registered on the Five Million Trees website
www.5milliontrees.nsw.gov.au
-

Project launch and promotion

It is a condition of grant funding that the Minister for Planning, NSW Government and the Office of Open Space and Parklands be:

- invited to attend any formal launch event (including commencement and completion ceremonies)
- advised 4 weeks prior to any formal event
- acknowledged of their contribution on all communications and media for the project.

Project completion

A final report is required at the completion of projects and is to be included with the submission of final payment claims. This report should be accompanied by photographs, a project launch and evidence of project completion.

Payment of grants

Successful applicants can only accept the program's Terms and Conditions in the online grants contract acceptance system.

A financial acquittal and project report will be required within three months of completion of the project. The project report will report against the outputs and outcomes information provided by the applicant. Applicants that do not provide a financial acquittal and project report by the required date will be ineligible for future funding.

Successful applications will also need to provide photographs of the completed project.

Projects must be completed within 18 months (excluding an establishment period) of the date of accepting the funding Terms and Conditions.

Insurance requirements

Organisations applying for funding via this program are required to have a minimum Public Liability Insurance cover of \$20 million.

It is recommended, but not a condition of funding, that applicant organisations have Personal Accident and Professional Indemnity insurance. Organisations that employ staff must comply with the *Workplace Injury Management and Workers Compensation Act 1998 (NSW)*.

Disclaimer

Submission of an application does not guarantee funding. The costs of preparing an application are borne by the applicant.



Privacy policy

DPE will collect and store the information you voluntarily provide to enable processing of this grant application.

Any information provided by you will be stored on a database that will only be accessed by authorised personnel and is subject to privacy restrictions. The information will only be used for the purpose for which it was collected.

DPE is required to comply with the *Privacy and Personal Information Protection Act 1988*. DPE collects the minimum personal information to enable it to contact an organisation and to assess the merits of an application.

Applicants must ensure that people whose personal details are supplied with applications are aware that DPE is being supplied with this information and how this information will be used.



Appendix

Appendix A: Tree canopy cover (%) of suburbs in Greater Sydney (2018)

Suburb	Canopy Cover Range (%)	Suburb	Canopy Cover Range (%)	Suburb	Canopy Cover Range (%)
A		Bangor	41% - 100%	Beverly Hills	11% - 15%
Abbotsbury	26% - 40%	Banksia	11% - 15%	Bexley	11% - 15%
Abbotsford	16% - 25%	Banksmeadow	0% - 10%	Bexley North	16% - 25%
Acacia Gardens	0% - 10%	Bankstown	11% - 15%	Bickley Vale	0% - 10%
Agnes Banks	16% - 25%	Bankstown	0% - 10%	Bidwill	11% - 15%
Airds	26% - 40%	Aeorodrome		Bilgola Beach	41% - 100%
Alexandria	11% - 15%	Barangaroo	0% - 10%	Bilgola Plateau	41% - 100%
Alfords Point	26% - 40%	Barden Ridge	41% - 100%	Bilpin	41% - 100%
Allambie Heights	41% - 100%	Bardia	11% - 15%	Birchgrove	16% - 25%
Allawah	16% - 25%	Bardwell Park	16% - 25%	Birrong	11% - 15%
Ambarvale	11% - 15%	Bardwell Valley	16% - 25%	Blackett	11% - 15%
Annandale	16% - 25%	Bargo	41% - 100%	Blackheath	41% - 100%
Annangrove	41% - 100%	Bass Hill	11% - 15%	Blacktown	0% - 10%
Appin	41% - 100%	Baulkham Hills	16% - 25%	Blair Athol	0% - 10%
Arcadia	41% - 100%	Bayview	41% - 100%	Blairmount	0% - 10%
Arncliffe	11% - 15%	Beacon Hill	26% - 40%	Blakehurst	16% - 25%
Arndell Park	0% - 10%	Beaconsfield	0% - 10%	Blaxland	41% - 100%
Artarmon	26% - 40%	Beaumont Hills	16% - 25%	Blaxlands Ridge	41% - 100%
Ashbury	16% - 25%	Beecroft	26% - 40%	Bligh Park	0% - 10%
Ashcroft	11% - 15%	Belfield	11% - 15%	Blue Mountains National Park	41% - 100%
Ashfield	16% - 25%	Belimbla Park	41% - 100%	Bondi	16% - 25%
Asquith	41% - 100%	Bell	41% - 100%	Bondi Beach	16% - 25%
Auburn	0% - 10%	Bella Vista	11% - 15%	Bondi Junction	11% - 15%
Austral	16% - 25%	Bellevue Hill	26% - 40%	Bonnet Bay	41% - 100%
Avalon Beach	41% - 100%	Belmore	0% - 10%	Bonnyrigg	11% - 15%
Avon	41% - 100%	Belrose	41% - 100%	Bonnyrigg Heights	0% - 10%
B		Berala	11% - 15%	Bossley Park	11% - 15%
Badgerys Creek	11% - 15%	Berambing	41% - 100%	Botany	16% - 25%
Balgowlah	26% - 40%	Berkshire Park	41% - 100%	Bow Bowling	0% - 10%
Balgowlah Heights	26% - 40%	Berowra	41% - 100%	Bowen Mountain	41% - 100%
Balmain	16% - 25%	Berowra Creek	26% - 40%	Box Hill	0% - 10%
Balmain East	16% - 25%	Berowra Heights	41% - 100%	Bradbury	11% - 15%
Balmoral	41% - 100%	Berowra Waters	26% - 40%		
		Berrilee	41% - 100%		
		Beverley Park	16% - 25%		

<i>Suburb</i>	<i>Canopy Cover Range (%)</i>
Breakfast Point	0% - 10%
Brighton-Le-Sands	0% - 10%
Bringelly	16% - 25%
Bronte	16% - 25%
Brooklyn	41% - 100%
Brookvale	16% - 25%
Brownlow Hill	11% - 15%
Bullaburra	41% - 100%
Bundeena	26% - 40%
Bungarribee	16% - 25%
Burraneer	16% - 25%
Burwood	16% - 25%
Burwood Heights	11% - 15%
Busby	11% - 15%
Buxton	41% - 100%
C	
Cabarita	16% - 25%
Cabramatta	11% - 15%
Cabramatta West	0% - 10%
Caddens	0% - 10%
Cambridge Gardens	0% - 10%
Cambridge Park	0% - 10%
Camden	11% - 15%
Camden Park	26% - 40%
Camden South	11% - 15%
Camellia	0% - 10%
Cammeray	26% - 40%
Campbelltown	11% - 15%
Camperdown	16% - 25%
Campsie	11% - 15%
Canada Bay	16% - 25%

<i>Suburb</i>	<i>Canopy Cover Range (%)</i>
Canley Heights	0% - 10%
Canley Vale	11% - 15%
Canoelands	41% - 100%
Canterbury	11% - 15%
Caringbah	16% - 25%
Caringbah South	16% - 25%
Carlingford	26% - 40%
Carlton	11% - 15%
Carnes Hill	0% - 10%
Carramar	16% - 25%
Carss Park	16% - 25%
Cartwright	16% - 25%
Castle Cove	41% - 100%
Castle Hill	26% - 40%
Castlecrag	41% - 100%
Castlereagh	16% - 25%
Casula	11% - 15%
Cataract	41% - 100%
Catherine Field	16% - 25%
Cattai	26% - 40%
Cawdor	11% - 15%
Cecil Hills	16% - 25%
Cecil Park	26% - 40%
Centennial Park	26% - 40%
Central Colo	41% - 100%
Central Macdonald	41% - 100%
Chatswood	26% - 40%
Chatswood West	41% - 100%
Cheltenham	41% - 100%
Cherrybrook	26% - 40%
Chester Hill	0% - 10%
Chifley	11% - 15%

<i>Suburb</i>	<i>Canopy Cover Range (%)</i>
Chippendale	0% - 10%
Chipping Norton	16% - 25%
Chiswick	11% - 15%
Chullora	11% - 15%
Church Point	41% - 100%
Claremont Meadows	16% - 25%
Clarendon	0% - 10%
Clareville	41% - 100%
Claymore	0% - 10%
Clemton Park	11% - 15%
Clontarf	41% - 100%
Clovelly	11% - 15%
Clyde	0% - 10%
Coasters Retreat	41% - 100%
Cobbitty	16% - 25%
Colebee	16% - 25%
Collaroy	16% - 25%
Collaroy Plateau	26% - 40%
Colo	41% - 100%
Colo Heights	11% - 15%
Colyton	11% - 15%
Como	26% - 40%
Concord	16% - 25%
Concord West	16% - 25%
Condell Park	0% - 10%
Connells Point	16% - 25%
Constitution Hill	16% - 25%
Coogee	16% - 25%
Cornwallis	0% - 10%
Cottage Point	41% - 100%
Couridjah	41% - 100%
Cowan	41% - 100%
Cranebrook	26% - 40%

Suburb	Canopy Cover Range (%)
Cremorne	26% - 40%
Cremorne Point	26% - 40%
Cromer	41% - 100%
Cronulla	11% - 15%
Crows Nest	11% - 15%
Croydon	11% - 15%
Croydon Park	11% - 15%
Cumberland Reach	41% - 100%
Curl Curl	16% - 25%
Currans Hill	0% - 10%
Currawong Beach	41% - 100%
D	
Daceyville	16% - 25%
Dangar Island	41% - 100%
Darkes Forest	41% - 100%
Darling Point	26% - 40%
Darlinghurst	11% - 15%
Darlington	16% - 25%
Davidson	41% - 100%
Dawes Point	0% - 10%
Dean Park	16% - 25%
Dee Why	16% - 25%
Denham Court	16% - 25%
Denistone	26% - 40%
Denistone East	16% - 25%
Denistone West	26% - 40%
Dharruk	0% - 10%
Dolans Bay	11% - 15%
Dolls Point	11% - 15%
Doonside	16% - 25%
Double Bay	26% - 40%
Douglas Park	26% - 40%
Dover Heights	11% - 15%

Suburb	Canopy Cover Range (%)
Drummoyne	16% - 25%
Duffys Forest	41% - 100%
Dulwich Hill	11% - 15%
Dundas	16% - 25%
Dundas Valley	26% - 40%
Dural	41% - 100%
E	
Eagle Vale	11% - 15%
Earlwood	16% - 25%
East Hills	16% - 25%
East Killara	41% - 100%
East Kurrajong	41% - 100%
East Lindfield	41% - 100%
East Ryde	26% - 40%
Eastern Creek	11% - 15%
Eastgardens	0% - 10%
Eastlakes	11% - 15%
Eastwood	26% - 40%
Ebenezer	0% - 10%
Edensor Park	0% - 10%
Edgecliff	16% - 25%
Edmondson Park	16% - 25%
Elanora Heights	41% - 100%
Elderslie	0% - 10%
Elizabeth Bay	16% - 25%
Elizabeth Hills	11% - 15%
Ellis Lane	11% - 15%
Elvina Bay	41% - 100%
Emerton	0% - 10%
Emu Heights	41% - 100%
Emu Plains	11% - 15%
Enfield	11% - 15%
Engadine	41% - 100%
Englorie Park	0% - 10%

Suburb	Canopy Cover Range (%)
Enmore	16% - 25%
Epping	26% - 40%
Ermington	16% - 25%
Erskine Park	11% - 15%
Erskineville	16% - 25%
Eschol Park	11% - 15%
Eveleigh	0% - 10%
F	
Fairfield	11% - 15%
Fairfield East	0% - 10%
Fairfield Heights	0% - 10%
Fairfield West	0% - 10%
Fairlight	16% - 25%
Faulconbridge	41% - 100%
Fernances	41% - 100%
Fiddletown	41% - 100%
Five Dock	11% - 15%
Forest Glen	41% - 100%
Forest Lodge	11% - 15%
Forestville	41% - 100%
Freemans Reach	11% - 15%
Frenchs Forest	26% - 40%
Freshwater	16% - 25%
G	
Galston	41% - 100%
Georges Hall	16% - 25%
Gilead	26% - 40%
Girraween	0% - 10%
Gladesville	16% - 25%
Glebe	16% - 25%
Gledswood Hills	0% - 10%
Glen Alpine	11% - 15%
Glenbrook	41% - 100%
Glendenning	11% - 15%
Glenfield	11% - 15%

<i>Suburb</i>	<i>Canopy Cover Range (%)</i>
Glenhaven	41% - 100%
Glenmore	26% - 40%
Glenmore Park	0% - 10%
Glenorie	41% - 100%
Glenwood	0% - 10%
Glossodia	26% - 40%
Gordon	41% - 100%
Granville	0% - 10%
Grasmere	11% - 15%
Grays Point	26% - 40%
Great Mackerel Beach	41% - 100%
Green Valley	0% - 10%
Greenacre	0% - 10%
Greendale	16% - 25%
Greenfield Park	11% - 15%
Greenhills Beach	0% - 10%
Greenwich	26% - 40%
Gregory Hills	0% - 10%
Greystanes	11% - 15%
Grose Vale	41% - 100%
Grose Wold	26% - 40%
Guildford	11% - 15%
Guildford West	0% - 10%
GyMEA	16% - 25%
GyMEA Bay	26% - 40%
H	
Haberfield	16% - 25%
Hammondville	26% - 40%
Harrington Park	11% - 15%
Harris Park	0% - 10%
Hassall Grove	0% - 10%
Hawkesbury Heights	41% - 100%

<i>Suburb</i>	<i>Canopy Cover Range (%)</i>
Haymarket	0% - 10%
Hazelbrook	41% - 100%
Heathcote	41% - 100%
Hebersham	0% - 10%
Heckenberg	11% - 15%
Henley	26% - 40%
Higher Macdonald	41% - 100%
Hillsdale	0% - 10%
Hinchinbrook	11% - 15%
Hobartville	0% - 10%
Holroyd	11% - 15%
Holsworthy	41% - 100%
Homebush	16% - 25%
Homebush West	11% - 15%
Horningsea Park	11% - 15%
Hornsby	41% - 100%
Hornsby Heights	41% - 100%
Horsley Park	16% - 25%
Hoxton Park	11% - 15%
Hunters Hill	26% - 40%
Huntingwood	11% - 15%
Huntleys Cove	26% - 40%
Huntleys Point	26% - 40%
Hurlstone Park	16% - 25%
Hurstville	11% - 15%
Hurstville Grove	16% - 25%
I	
Illawong	26% - 40%
Ingleburn	16% - 25%
Ingleside	41% - 100%

<i>Suburb</i>	<i>Canopy Cover Range (%)</i>
J	
Jamisontown	0% - 10%
Jannali	26% - 40%
Jordan Springs	0% - 10%
K	
Kangaroo Point	0% - 10%
Kareela	26% - 40%
Katoomba	41% - 100%
Kearns	11% - 15%
Kellyville	11% - 15%
Kellyville Ridge	0% - 10%
Kemps Creek	11% - 15%
Kensington	16% - 25%
Kenthurst	41% - 100%
Kentlyn	41% - 100%
Killara	26% - 40%
Killarney Heights	41% - 100%
Kings Langley	11% - 15%
Kings Park	11% - 15%
Kingsford	11% - 15%
Kingsgrove	11% - 15%
Kingswood	11% - 15%
Kirkham	0% - 10%
Kirrawee	16% - 25%
Kirribilli	16% - 25%
Kogarah	11% - 15%
Kogarah Bay	0% - 10%
Ku-ring-gai Chase	41% - 100%
Kurmond	16% - 25%
Kurnell	26% - 40%
Kurraba Point	26% - 40%
Kurrajong	41% - 100%

<i>Suburb</i>	<i>Canopy Cover Range (%)</i>
Kurrajong Heights	41% - 100%
Kurrajong Hills	41% - 100%
Kyeemagh	0% - 10%
Kyle Bay	11% - 15%
L	
La Perouse	16% - 25%
Lakemba	0% - 10%
Lakesland	41% - 100%
Lalor Park	11% - 15%
Lane Cove	41% - 100%
Lane Cove North	41% - 100%
Lane Cove West	26% - 40%
Lansdowne	41% - 100%
Lansvale	16% - 25%
Lapstone	41% - 100%
Laughtondale	41% - 100%
Lavender Bay	16% - 25%
Lawson	41% - 100%
Leets Vale	41% - 100%
Leichardt	11% - 15%
Len Waters Estate	16% - 25%
Leonay	26% - 40%
Leppington	16% - 25%
Lethbridge Park	0% - 10%
Leumeah	16% - 25%
Leura	41% - 100%
Lewisham	16% - 25%
Liberty Grove	16% - 25%
Lidcombe	0% - 10%
Lilli Pilli	11% - 15%
Lilyfield	16% - 25%
Linden	41% - 100%

<i>Suburb</i>	<i>Canopy Cover Range (%)</i>
Lindfield	41% - 100%
Linley Point	26% - 40%
Little Bay	11% - 15%
Liverpool	0% - 10%
Llandilo	26% - 40%
Loftus	41% - 100%
Londonderry	26% - 40%
Long Point	41% - 100%
Longueville	26% - 40%
Lovett Bay	41% - 100%
Lower Macdonald	41% - 100%
Lower Portland	41% - 100%
Lucas Heights	41% - 100%
Luddenham	0% - 10%
Lugarno	26% - 40%
Lurnea	0% - 10%
M	
Macquarie Fields	16% - 25%
Macquarie Links	16% - 25%
Macquarie Park	26% - 40%
Maianbar	16% - 25%
Malabar	11% - 15%
Maldon	41% - 100%
Manly	26% - 40%
Manly Vale	26% - 40%
Maraylya	41% - 100%
Marayong	11% - 15%
Maroota	41% - 100%
Maroubra	11% - 15%
Marrickville	11% - 15%
Marsden Park	11% - 15%
Marsfield	26% - 40%
Mascot	0% - 10%

<i>Suburb</i>	<i>Canopy Cover Range (%)</i>
Matraville	11% - 15%
Mays Hill	11% - 15%
McCarrs Creek	41% - 100%
McGraths Hill	0% - 10%
McMahons Point	16% - 25%
Meadowbank	16% - 25%
Medlow Bath	41% - 100%
Megalong Valley	41% - 100%
Mellong	41% - 100%
Melrose Park	11% - 15%
Menai	41% - 100%
Menangle	16% - 25%
Menangle Park	16% - 25%
Merrylands	0% - 10%
Merrylands West	16% - 25%
Middle Cove	41% - 100%
Middle Dural	41% - 100%
Middleton Grange	11% - 15%
Miller	16% - 25%
Millers Point	11% - 15%
Milperra	16% - 25%
Milsons Passage	16% - 25%
Milsons Point	0% - 10%
Minchinbury	0% - 10%
Minto	11% - 15%
Minto Heights	41% - 100%
Miranda	16% - 25%
Mogo Creek	41% - 100%
Mona Vale	26% - 40%
Monterey	11% - 15%
Moore Park	16% - 25%
Moorebank	16% - 25%
Morning Bay	41% - 100%

<i>Suburb</i>	<i>Canopy Cover Range (%)</i>
Mortdale	16% - 25%
Mortlake	0% - 10%
Mosman	26% - 40%
Mount Annan	16% - 25%
Mount Colah	41% - 100%
Mount Druitt	11% - 15%
Mount Hunter	41% - 100%
Mount Irvine	41% - 100%
Mount Ku-ring-gai	41% - 100%
Mount Lewis	11% - 15%
Mount Pritchard	11% - 15%
Mount Riverview	41% - 100%
Mount Tomah	41% - 100%
Mount Vernon	11% - 15%
Mount Victoria	41% - 100%
Mount Wilson	41% - 100%
Mountain Lagoon	41% - 100%
Mowbray Park	16% - 25%
Mulgoa	41% - 100%
Mulgrave	0% - 10%
N	
Narellan	0% - 10%
Narellan Vale	0% - 10%
Naremburn	26% - 40%
Narrabeen	16% - 25%
Narraweena	26% - 40%
Narwee	16% - 25%
Nattai	41% - 100%
Nelson	26% - 40%
Neutral Bay	26% - 40%
Newington	16% - 25%
Newport	26% - 40%
Newtown	16% - 25%

<i>Suburb</i>	<i>Canopy Cover Range (%)</i>
Normanhurst	41% - 100%
North Balgowlah	26% - 40%
North Bondi	11% - 15%
North Curl Curl	16% - 25%
North Epping	41% - 100%
North Kellyville	26% - 40%
North Manly	26% - 40%
North Narrabeen	26% - 40%
North Parramatta	26% - 40%
North Richmond	16% - 25%
North Rocks	26% - 40%
North Ryde	26% - 40%
North St Marys	16% - 25%
North Strathfield	11% - 15%
North Sydney	16% - 25%
North Turramurra	41% - 100%
North Wahroonga	41% - 100%
North Willoughby	16% - 25%
Northbridge	26% - 40%
Northmead	26% - 40%
Northwood	41% - 100%
Norwest	16% - 25%
O	
Oakdale	41% - 100%
Oakhurst	0% - 10%
Oakville	26% - 40%
Oatlands	16% - 25%
Oatley	26% - 40%
Old Guildford	0% - 10%

<i>Suburb</i>	<i>Canopy Cover Range (%)</i>
Old Toongabbie	11% - 15%
Oran Park	0% - 10%
Orangeville	26% - 40%
Orchard Hills	16% - 25%
Oxford Falls	41% - 100%
Oxley Park	11% - 15%
Oyster Bay	26% - 40%
P	
Paddington	16% - 25%
Padstow	11% - 15%
Padstow Heights	26% - 40%
Pagewood	16% - 25%
Palm Beach	26% - 40%
Panania	11% - 15%
Parklea	0% - 10%
Parramatta	11% - 15%
Peakhurst	16% - 25%
Peakhurst Heights	26% - 40%
Pemulwuy	11% - 15%
Pendle Hill	11% - 15%
Pennant Hills	41% - 100%
Penrith	11% - 15%
Penshurst	16% - 25%
Perrys Crossing	41% - 100%
Petersham	16% - 25%
Pheasants Nest	41% - 100%
Phillip Bay	16% - 25%
Picnic Point	26% - 40%
Picton	16% - 25%
Pitt Town	16% - 25%
Pitt Town Bottoms	0% - 10%

<i>Suburb</i>	<i>Canopy Cover Range (%)</i>
Pleasure Point	26% - 40%
Plumpton	0% - 10%
Point Piper	26% - 40%
Port Botany	0% - 10%
Port Hacking	11% - 15%
Potts Hill	16% - 25%
Potts Point	0% - 10%
Prairiewood	16% - 25%
Prestons	0% - 10%
Prospect	16% - 25%
Punchbowl	0% - 10%
Putney	16% - 25%
Pymble	41% - 100%
Pymont	0% - 10%
Q	
Quakers Hill	11% - 15%
Queens Park	16% - 25%
Queenscliff	16% - 25%
R	
Raby	0% - 10%
Ramsgate	16% - 25%
Ramsgate Beach	11% - 15%
Randwick	16% - 25%
Razorback	41% - 100%
Redfern	16% - 25%
Regents Park	0% - 10%
Regentville	16% - 25%
Revesby	0% - 10%
Revesby Heights	26% - 40%
Rhodes	11% - 15%
Richmond	11% - 15%
Richmond Lowlands	0% - 10%
Riverstone	11% - 15%
Riverview	26% - 40%

<i>Suburb</i>	<i>Canopy Cover Range (%)</i>
Riverwood	16% - 25%
Rockdale	11% - 15%
Rodd Point	11% - 15%
Rookwood	16% - 25%
Rooty Hill	11% - 15%
Ropes Crossing	41% - 100%
Rose Bay	16% - 25%
Rosebery	11% - 15%
Rosehill	0% - 10%
Roselands	11% - 15%
Rosemeadow	0% - 10%
Roseville	26% - 40%
Roseville Chase	41% - 100%
Rossmore	16% - 25%
Rouse Hill	16% - 25%
Royal National Park	41% - 100%
Rozelle	11% - 15%
Ruse	26% - 40%
Rushcutters Bay	16% - 25%
Russell Lea	11% - 15%
Rydalmere	11% - 15%
Ryde	16% - 25%
S	
Sackville	41% - 100%
Sackville North	41% - 100%
Sadleir	11% - 15%
Sandringham	0% - 10%
Sandy Point	26% - 40%
Sans Souci	0% - 10%
Scheyville	41% - 100%
Schofields	11% - 15%
Scotland Island	41% - 100%
Seaforth	26% - 40%
Sefton	0% - 10%

<i>Suburb</i>	<i>Canopy Cover Range (%)</i>
Seven Hills	11% - 15%
Shalvey	0% - 10%
Shanes Park	41% - 100%
Silverdale	41% - 100%
Silverwater	0% - 10%
Singletons Mill	41% - 100%
Smeaton Grange	0% - 10%
Smithfield	0% - 10%
South Coogee	16% - 25%
South Granville	11% - 15%
South Hurstville	11% - 15%
South Maroota	41% - 100%
South Penrith	0% - 10%
South Turramurra	41% - 100%
South Wentworthville	11% - 15%
South Windsor	11% - 15%
Spring Farm	11% - 15%
Springwood	41% - 100%
St Albans	41% - 100%
St Andrews	11% - 15%
St Clair	0% - 10%
St Helens Park	26% - 40%
St Ives	41% - 100%
St Ives Chase	41% - 100%
St Johns Park	0% - 10%
St Leonards	16% - 25%
St Marys	16% - 25%
St Peters	0% - 10%
Stanhope Gardens	0% - 10%
Stanmore	16% - 25%
Strathfield	16% - 25%

<i>Suburb</i>	<i>Canopy Cover Range (%)</i>
Strathfield South	0% - 10%
Summer Hill	16% - 25%
Sun Valley	41% - 100%
Surry Hills	11% - 15%
Sutherland	26% - 40%
Sydenham	0% - 10%
Sydney	11% - 15%
Sydney Olympic Park	26% - 40%
Sylvania	16% - 25%
Sylvania Waters	0% - 10%
T	
Tahmoor	26% - 40%
Tamarama	16% - 25%
Taren Point	0% - 10%
Telopea	26% - 40%
Tempe	0% - 10%
Ten Mile Hollow	41% - 100%
Tennyson	26% - 40%
Tennyson Point	16% - 25%
Terrey Hills	41% - 100%
The Devils Wilderness	41% - 100%
The Oaks	26% - 40%
The Ponds	0% - 10%
The Rocks	0% - 10%
The Slopes	26% - 40%
Theresa Park	16% - 25%
Thirlmere	41% - 100%
Thornleigh	26% - 40%
Toongabbie	11% - 15%
Tregear	16% - 25%
Turrumurra	41% - 100%
Turrella	16% - 25%

<i>Suburb</i>	<i>Canopy Cover Range (%)</i>
U	
Ultimo	0% - 10%
Upper Colo	41% - 100%
Upper Macdonald	41% - 100%
V	
Valley Heights	41% - 100%
Varroville	16% - 25%
Vaucluse	26% - 40%
Villawood	11% - 15%
Vineyard	16% - 25%
Voyager Point	41% - 100%
W	
Wahroonga	41% - 100%
Waitara	16% - 25%
Wakeley	0% - 10%
Wallacia	26% - 40%
Wareemba	0% - 10%
Warragamba	41% - 100%
Warrawee	41% - 100%
Warriewood	26% - 40%
Warrimoo	41% - 100%
Warwick Farm	11% - 15%
Waterfall	41% - 100%
Waterloo	16% - 25%
Watsons Bay	26% - 40%
Wattle Grove	0% - 10%
Waverley	16% - 25%
Waverton	26% - 40%
Webbs Creek	41% - 100%
Wedderburn	41% - 100%
Wentworth Falls	41% - 100%
Wentworth Point	0% - 10%
Wentworthville	16% - 25%

<i>Suburb</i>	<i>Canopy Cover Range (%)</i>
Werombi	41% - 100%
Werrington	11% - 15%
Werrington County	16% - 25%
Werrington Downs	0% - 10%
West Hoxton	16% - 25%
West Pennant Hills	26% - 40%
West Pymble	41% - 100%
West Ryde	16% - 25%
Westleigh	41% - 100%
Westmead	16% - 25%
Wetherill Park	0% - 10%
Whalan	11% - 15%
Whale Beach	26% - 40%
Wheeler Heights	26% - 40%
Wheeny Creek	41% - 100%
Wilberforce	16% - 25%
Wiley Park	11% - 15%
Willmot	16% - 25%
Willoughby	26% - 40%
Willoughby East	26% - 40%
Wilton	41% - 100%
Windsor	11% - 15%
Windsor Downs	26% - 40%
Winmalee	41% - 100%
Winston Hills	16% - 25%
Wisemans Ferry	41% - 100%
Wolli Creek	11% - 15%
Wollstonecraft	26% - 40%
Womerah	41% - 100%
Woodbine	16% - 25%
Woodcroft	11% - 15%

Suburb	Canopy Cover Range (%)
Woodford	41% - 100%
Woodpark	0% - 10%
Woollahra	26% - 40%
Woolloomooloo	0% - 10%
Woolooware	26% - 40%
Woolwich	26% - 40%
Woronora	41% - 100%
Woronora Heights	41% - 100%
Wrights Creek	41% - 100%
Y	
Yagoona	0% - 10%
Yanderra	26% - 40%
Yarramundi	41% - 100%
Yarrawarra	41% - 100%
Yellow Rock	41% - 100%
Yennora	0% - 10%
Yerranderie	41% - 100%
Yowie Bay	16% - 25%
Z	
Zetland	11% - 15%





