

Greening our City Grant Program

Grant Guidelines

June 2020

Acknowledgement

NSW Department of Planning, Industry and Environment acknowledges the Traditional Custodians of the land and pays respect to all Elders past, present and future.

Greening our City Grant Program

Grant Guidelines June 2020

Copyright notice

© State of New South Wales through Department of Planning, Industry and Environment 2020. You may copy, distribute, display, download and otherwise freely deal with this publication for any purpose, provided that you attribute the Department of Planning, Industry and Environment as the owner. However, you must obtain permission if you wish to charge others for access to the publication (other than at cost); include the publication in advertising or a product for sale; modify the publication; or republish the publication on a website. You may freely link to the publication on a departmental website.

Disclaimer

The information contained in this publication is based on knowledge and understanding at the time of writing (June 2020) and may not be accurate, current or complete. The State of New South Wales (including the NSW Department of Planning, Industry and Environment), the author and the publisher take no responsibility, and will accept no liability, for the accuracy, currency, reliability or correctness of any information included in the document (including material provided by third parties). Readers should make their own inquiries and rely on their own advice when making decisions related to material contained in this publication.

Cover image: *Tree-lined walkway in Belmore Park, Central*

Foreword



The NSW Premier's Priorities are part of the NSW Government's commitment to enhancing the quality of life of the people of NSW. The Greening our City Premier's Priority focusses on improving liveability in our biggest city by planting one million trees in Greater Sydney by 2022. This is an important first step in meeting our ambitious goal of planting five million trees by 2030.

Increasing the tree canopy in our local parks, streets and neighbourhoods will provide much-needed shade and shelter from heat, improve our air and water quality, improve health and wellbeing and build our resilience to climate change.

A greener, healthier and more liveable city is our vision for the future, but we can't do it alone. That's why we're inviting local councils, organisations and the broader community to take part in the effort, with \$12.5 million in grant funding available in 2020 to plant more trees and expand green cover right across Sydney.

The community's response to COVID-19 has highlighted the importance of quality, green public spaces—we have been drawn to our parks, neighbourhoods, walking and cycling tracks. This Premier's Priority and grant program is about making these places greener, shadier and more attractive to the entire community.

The Greening our City Grant Program is about building partnerships to help boost Sydney's tree canopy and green cover. Together, through the delivery of the Premier's Priority, we have the opportunity to make a real difference now and leave a legacy of a better city for years to come.

Rob Stokes

NSW Minister for Planning and Public Spaces



The NSW Government's commitment to plant one million trees by 2022 will green our city. It's focused on improving both the environment and liveability of suburbs throughout the Greater Sydney area.

The Greening our City Grant Program is a key way in which we can partner to deliver better urban canopy and green cover across our city.

Previous grants have seen work commence on planting new trees in some of Sydney's lowest canopy cover suburbs. These trees will provide long-term payoffs by improving the look of our local areas and increasing our resilience to climate change. They will help reduce urban heat, improve air quality and provide shade to help communities stay active and connected.

This year we are committing \$10 million in grants under the 'Cooler suburbs' funding stream for local councils. We know how important it is to get the right tree in the right place and want to test new ways to do this. We want grant applicants to outline the water-efficient measures they are implementing to help ensure the trees we're planting today can survive future hot weather and droughts.

A further \$2.5 million is available under the 'Green innovations' funding stream for organisations working with councils to develop innovative solutions to challenges faced by communities seeking to expand urban tree canopy and green cover. We are interested in projects that may be transferable and scalable to other parts of the Greater Sydney region and want to foster collaboration between local councils and their partners.

The contribution we are all making today will help ensure Sydney's unique native plants and animals continue as part of a city we all wish to live, work and play in.

Alex O'Mara

Group Deputy Secretary
Place Design and Public Spaces
Department of Planning, Industry and Environment



*Tree planting with school children
at Haydon Park, Rosemeadow*

Contents

| | | | |
|---|-----------|---|-----------|
| Introduction | 4 | Stream 1: Cooler suburbs | 12 |
| Greening our City—Premier’s Priority | 4 | Eligible applicants | 12 |
| Building on progress made | 4 | Eligible projects | 12 |
| Five Million Trees initiative | 5 | Works to be funded | 12 |
| Previous grant program | 6 | Assessment criteria | 13 |
| Benefits of trees | 6 | Ineligible projects | 13 |
| Analysis of urban tree canopy within Greater Sydney | 7 | Stream 2: Green innovations | 15 |
| | | Eligible applicants | 15 |
| Program overview | 8 | Eligible projects | 15 |
| Participation | 8 | Assessment criteria | 15 |
| Funding opportunities | 9 | | |
| How to apply | 10 | Requirements for successful recipients | 16 |
| Process overview | 11 | Registration of trees | 16 |
| For more information | 11 | Tree management plan | 16 |
| | | Project launch and promotion | 16 |
| | | Reporting and monitoring | 16 |
| | | Project management | 16 |
| | | Project completion | 16 |
| | | Grant payments | 17 |
| | | Disclaimer | 17 |
| | | Privacy policy | 17 |
| | | Notification | 17 |
| | | Endnotes | 18 |

Introduction

Greening our City— Premier’s Priority

In June 2019 the Premier of New South Wales announced Greening our City, a Premier’s Priority to increase green cover and plant 1 million trees by 2022.

The objectives of the Greening our City priority are to:

- plant one million trees in Greater Sydney by 2022.
- enhance Greater Sydney’s urban tree canopy and green cover, particularly in areas with low canopy cover.
- help prepare for climate extremes and mitigate urban heat islands through tree planting and other green cover initiatives to cool urban areas and provide shade.
- promote partnership projects between local and state governments, organisations, industry, the private sector and the community.
- support projects that demonstrate a commitment to canopy expansion, including improved outcomes for health, resilience and climate adaptation.

Building on progress made

The NSW Government is committed to working in partnership with local governments, industry, the private sector and communities to support and boost urban canopy, green cover and tree planting efforts in Greater Sydney. Through these efforts, we will help address issues such as:

- urban canopy and green cover deficits.
- urban heat islands and heat-vulnerable areas.
- adaptation to climate change.
- tree planting barriers within urban landscapes.
- efficient water use.

The Greater Sydney community has responded to the call to enhance Sydney’s urban canopy, with over 230,000 trees already planted and registered (on private and public land).

To further advance the Greening our City Premier’s Priority, the NSW Government has entered into partnerships with Landcare NSW and Greening Australia to plant 172,000 trees across Greater Sydney, including at schools and through community planting events.

The funding being offered under the Greening our City Grant Program will build on over \$5 million in grants awarded in 2019 to 32 tree-planting projects put forward by 20 councils. By October 2020, these projects will see an additional 21,000 new trees planted across Sydney’s streets, parks, neighbourhoods and in suburbs with the lowest canopy cover, adding to the growing tally of new tree canopy across Greater Sydney.






Five Million Trees initiative

Five Million Trees for Greater Sydney (5MT) is the over-arching initiative that is delivering the Greening our City Premier's Priority. 5MT is administered by the Department of Planning, Industry and Environment and was created in 2018 to expand the tree canopy across Greater Sydney by planting more trees in our streets, parks, private yards, neighbourhoods and schools.

The first four years of 5MT is funded through the NSW Government's Climate Change Fund under the 'increasing resilience to a changing climate' program. Funding under the 5MT initiative has been allocated to deliver the Greening our City Premier's Priority.

The Climate Change Fund was established to address the impacts of climate change, encourage energy and water saving activities and increase public awareness and acceptance of climate change.



Man running past natural shade in Sydney's North Shore

Previous grant program

| | | |
|---|--|---|
| <p>21,000 trees being planted</p>  | <p>53% of the trees to be planted within parks</p>  | <p>47% of the trees to be planted along streets</p>  |
| <p>20 councils awarded funding</p>  | <p> 32 projects</p> | <p> So far we've planted 5,842</p> |

Benefits of trees



100,000 trees can provide **\$1.45 million** worth of **electricity and water savings** every year.¹



A 10% increase in street tree canopy can **increase the value of a property** by an average of **\$50,000**.⁴



Trees provide urban animals with **food and habitat**.²



Trees can filter pollutants from stormwater through their canopy, trunks and roots.⁵



The shade that trees provide can **reduce temperature**, with every 10% increase in tree canopy reducing temperatures by 1.13°C.³

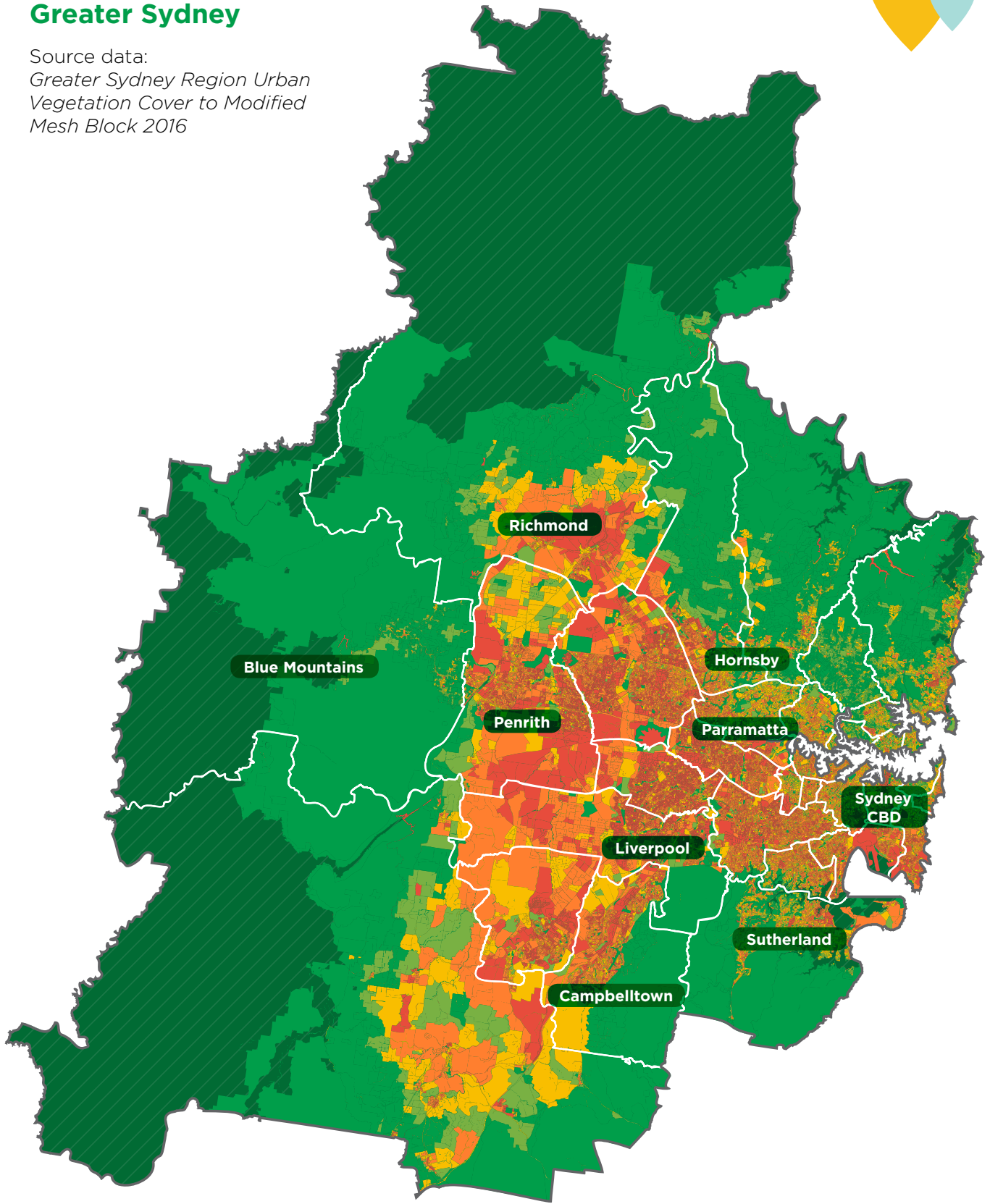


Trees are good for wellbeing. Hospital patients with a view of greenery recover faster than those without.⁶



Analysis of urban tree canopy within Greater Sydney

Source data:
Greater Sydney Region Urban
Vegetation Cover to Modified
Mesh Block 2016



Greater Sydney boundary



Local government area

Urban tree canopy %



Program overview

The Greening our City Grant Program provides two funding streams designed to support increased tree planting by all 33 councils in Greater Sydney. It will also support innovative demonstration projects by supporting tree planting and greening projects between any organisation that partners with a local council within the Greater Sydney region.

Up to \$12.5 million is being made available through the program across two funding streams. This funding will be available to eligible local councils and council-led project teams through a competitive grant process.

The program is being administered by Local Government NSW in partnership with the department.



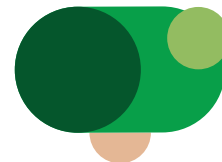
Participation

All projects must be submitted by a local council for funding and reporting purposes. All 33 councils in the Greater Sydney region are eligible to participate.

- Bayside Council
- Blacktown City Council
- Blue Mountains City Council
- Burwood Council
- Camden Council
- Campbelltown City Council
- City of Canada Bay
- Canterbury-Bankstown Council
- Cumberland Council
- Fairfield City Council
- Georges River Council
- Hawkesbury City Council
- Hills Shire Council
- The Hornsby Shire Council
- The Council of the Municipality of Hunters Hill
- Inner West Council
- Ku-ring-gai Council
- Lane Cove Municipal Council
- Liverpool City Council
- Mosman Municipal Council
- North Sydney Council
- Northern Beaches Council
- City of Parramatta Council
- Penrith City Council
- Randwick City Council
- City of Ryde Council
- Strathfield Municipal Council
- Sutherland Shire Council
- City of Sydney
- Waverley Shire Council
- City of Willoughby
- Wollondilly Shire Council
- Woollahra Municipal Council

Councils outside of Greater Sydney are **not** eligible to apply.

Children watering a juvenile tree in Western Sydney



Funding opportunities

Applications for funding will be accepted under two funding streams:

- Stream one: Cooler suburbs
- Stream two: Green innovations



Stream 2: Green innovations

This funding stream focuses on finding innovative solutions to challenges the community and stakeholders are facing as they work towards achieving increased tree canopy and green cover across the Greater Sydney Region. Funding is available to demonstration projects that will produce outcomes that are scalable and/or transferable across Sydney and beyond. Projects can address best-practice methods, existing challenges, or an emerging problem. Examples include, but are not limited to, drought tolerance, increasing shade, planting with powerlines, street planting, air quality and encouraging active transport.

We will consider projects that:

- demonstrate best practice in tree planting and greenery to reduce climate change impacts.
- investigate existing issues involving planting and/or maintaining trees and demonstrate a contemporary, scalable response.
- display innovation in the use of trees and greenery in an urban setting.

To foster partnerships and collaboration, this stream is open to community groups, non-government organisations, the private sector and researchers forming project groups and partnering with local councils or local government organisations. Grant funding of up to \$2.5 million is available for these projects to further enhance, protect and/or showcase trees and urban greening within our city.

Cash funding and/or in-kind contributions must be provided by the party(ies) to show the overall value being realised by the project. Local councils must be a partner in the project, managing grant funds and reporting requirements. Any financial, in-kind, collaborative or strategic support will strengthen your proposal. Applications must document all appropriate contributions from the applying parties, be they financial or otherwise.

Eligibility and criteria are provided on [page 17](#)



Stream 1: Cooler suburbs

Up to \$10 million in funding is available under Stream 1 to support and boost tree planting projects by eligible councils. This grant stream will give priority to applications addressing canopy deficits by planting trees in suburbs with low canopy cover and increased exposure to heat. Planting more trees to enhance tree canopy will provide vital shade that reduces ambient temperatures for local communities and will help mitigate the urban heat-island effect.

The department undertook an extensive mapping exercise of the Greater Sydney region, measuring canopy cover and urban heat island effects in 2016. This data is available in a spatial viewer that can be accessed by all applicants for reference in their application.

[Link: dpie.nsw.gov.au/greeningourcitygrants](http://dpie.nsw.gov.au/greeningourcitygrants)

Councils should match funding on a dollar for dollar basis, where possible. In-kind contributions may be included as a contribution to matching funds.

Funds obtained through the program must be used to purchase and plant trees, and to care for and manage newly planted trees during their 12-month establishment period to ensure they have the best chance of survival. Proof of successful planting must be provided.

Councils will need to demonstrate that there is a reliable water supply to the newly planted trees during the first-year establishment period. Applications that propose to incorporate efficient water supply or water efficient technologies such as recycled water or stormwater are encouraged. This is in direct response to recent drought conditions and imposed water restrictions.

Eligibility and criteria are provided on [page 14](#)



*Woman reading in a green public space
with tree cover*

How to apply

1



Visit the website

dpie.nsw.gov.au/greeningourcitygrants

Read the information about the grant program to determine if you are eligible.

2



Read these grant guidelines

Familiarise yourself with the grant program requirements and determine your project application stream.

3



Complete and submit the application by the closing date and time

Follow the instructions at dpie.nsw.gov.au/greeningourcitygrants

Attach relevant pages or sections for supporting evidence for your application.

You can download information sheets, answers to frequently asked questions and other guidance material from:

dpie.nsw.gov.au/greeningourcitygrants

Applications must be submitted by:

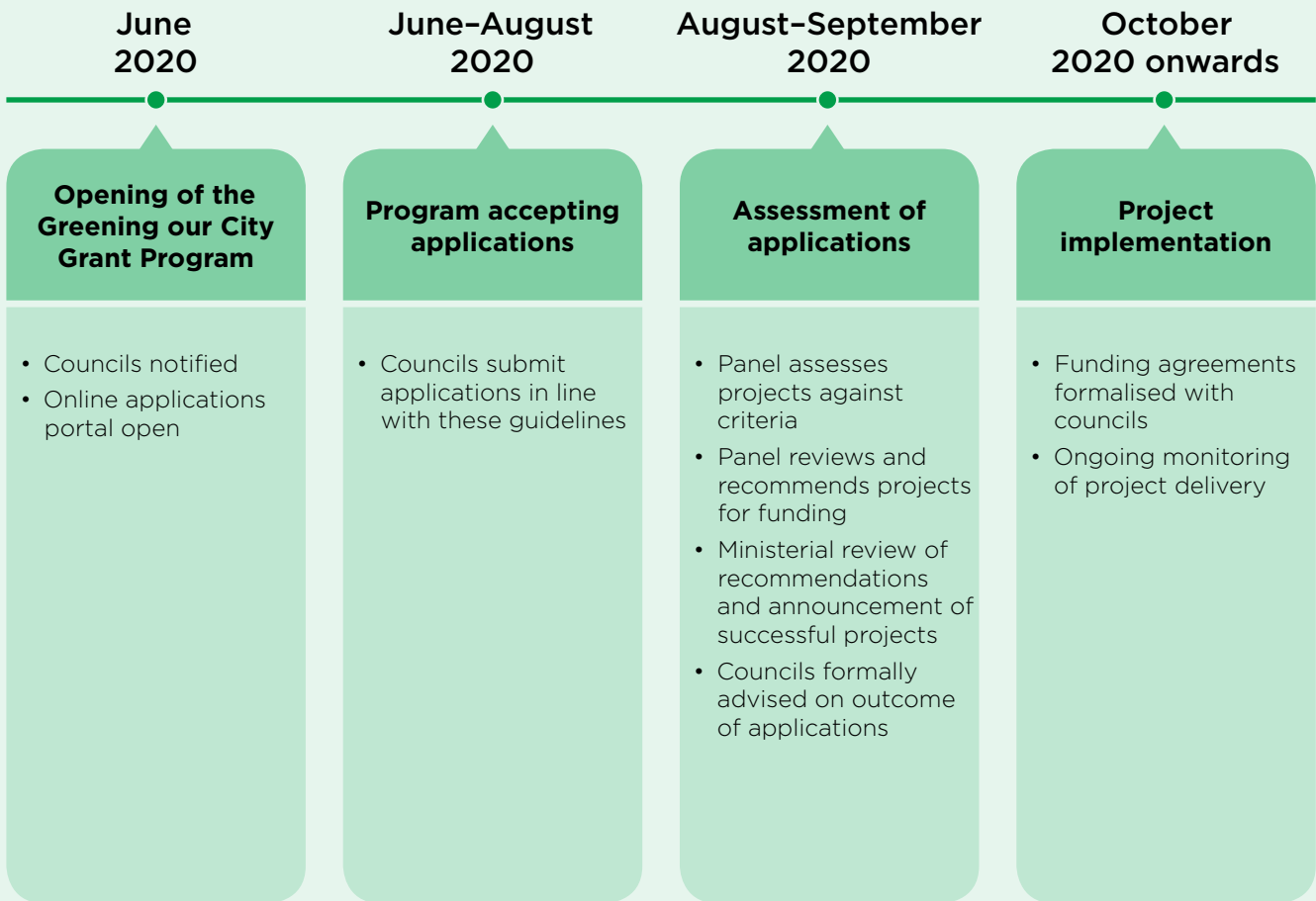
11.59pm (AEST) on
Wednesday, 19 August 2020

Applicants must:

- answer all questions in the application portal
- attach copies of plans/reports referred to in your application. Attach only relevant pages or sections, not reports in their entirety

Applications must also satisfy the grant criteria and you must accept the conditions outlined in this guideline.

Process overview



For more information

Local Government NSW, as administrative partner in this grant round, can provide information on the interpretation of these guidelines, including the types of project eligible for funding, and on the application process.

To maintain a fair and equitable process, staff will not be able to edit or correct any applications, but we can provide feedback if your application is unsuccessful.

Applications must be submitted by:

11.59pm (AEST) on
Wednesday, 19 August 2020

For inquiries or more information contact:

GreeningOurCity@lgnsw.org.au

02 9242 4042



Deciduous trees in Surry Hills

Stream 1: Cooler suburbs

Eligible applicants

Grant funding for Stream 1 is only open to local councils in Greater Sydney (full list on [page 8](#) of these guidelines).

The applicants are responsible for providing the necessary labour, plant and materials, management and supervision to complete the project. This may include working cooperatively with the community and relevant government agencies.

Eligible projects

All funding is for tree planting and associated works only.

To be eligible for funding, applications must demonstrate the following:

- **Matched funding**—Grant funding must be matched dollar for dollar with cash funding where possible. However, *in-kind contributions* may be included. We may consider applications for less than matched funding where adequate reasoning is provided, and appropriate benefit will be realised.
- **Canopy expansion**—Projects must demonstrate the extent of impact they will have on local tree canopy.
- **Policy alignment**—Projects must align with [Climate Change Fund objectives](#) and [Greater Sydney District-specific priorities](#).
- **Timing**—tree planting must occur within 18 months of funding approval and any trees planted are to be maintained for a subsequent 12 month establishment period.

In-kind contributions: Councils are eligible to include in their grant applications personnel costs (of up to 12 months) that directly relate to the establishment period of trees planted under their projects. However, staff positions that do not relate to the establishment of planted trees are not eligible for inclusion under this grant.

Works to be funded

Capital works that will be considered include:

- street tree planting
- tree planting projects in new and existing open space areas such as:
 - corridors
 - parks
 - plazas
 - carparks
 - roads
- community tree-planting programs.

We may also consider providing funding for infrastructure to support tree planting through this stream, such as:

- tree pits
- soil/mulch
- structural soil cells or similar
- root barriers
- irrigation
- drainage
- tree guards
- root ball support
- other protective measures

Online spatial tool

For this stream, an online spatial tool has been developed to assist in the application and assessment of grant proposals. Using the layers, provided, the tool enables applicants to identify their project spatially to calculate:

- the tree canopy level
- urban heat island level
- heat vulnerability index
- soil infiltration rate.

Distribution of funding

The allocation of funding for this stream will prioritise suburbs with lower canopy levels. Each project will be assessed on its merits by an independent assessment panel. Outcomes of this assessment will be compared with projects in similar canopy ranges to determine the recommended funding allocation.



Assessment criteria

Applications will be assessed by an independent assessment panel against the following criteria:

1. Merit (50%)

- Clear vision and need for the project
- Demonstrated alignment with the program objectives (see [page 4](#)), inclusive of outcomes from the online spatial tool:
 - the tree canopy level
 - urban heat island level
 - heat vulnerability index
 - soil infiltration rate
- Number of trees to be planted and proposed canopy cover increase
- Methodology to ensure the first-year establishment of the trees, including commitment to put measures in place to ensure the efficient supply of water for the establishment period.
- Quality of evaluation methods

2. Engagement (10%)

- Strategies for ongoing engagement of the community and participants
- Consideration of community expectations and how these will be addressed

3. Viability (20%)

- The project and budget are supported by council and stakeholders
- The project is well planned with appropriate risk management in place
- Realistic project scope, resourcing and timelines to complete the project

4. Value for money (20%)

- Detailed and accurate budget
- Value for money and realistic budget relative to the scale and impact of the project
- Appropriate use of public funds and provision for contingencies
- Insurance and other liabilities
- The project supports tree establishment in the context of council's broader strategies to maintain or increase tree canopy

Couple walking through a park with large canopy trees

Ineligible projects

The following works are **not** eligible for funding under this program:

- Bush regeneration/revegetation
- Funding of personnel or staff positions
- Planning and strategy projects





*Knitted tree sock on the trunk
of a deciduous tree*

Stream 2: Green innovations



Eligible applicants

Applications must be submitted by a local council or local government organisation, with collaborators supplying evidence of their support. Collaborators may include, but are not limited to, researchers (universities/TAFE), community groups, non-government organisations and private-sector entities.

The applicants are responsible for undertaking all labour, supply of plant and materials, management and supervision required to complete the project. This may include working cooperatively with the community and relevant government agencies.

Eligible projects

To be eligible for funding, applications need to show how their projects meet the following:

- **Green focus**—All projects must involve tree planting and green cover as its key activity.
- **Program alignment**—Projects must align with [Climate Change Fund objectives](#) and Greening our City Program objectives (see [page 4](#)).
- **Timing**—All projects must be completed within 18 months of funding approval.

Assessment criteria

Applications will be assessed by an independent assessment panel against the following criteria:

1. Merit (50%)

- Clear vision, outputs and problem definition for the project
- Alignment with the Greening our City program objectives
- Strategies for evaluating and measuring results of the project
- Number of trees to be planted and extent of canopy and/or green cover to be realised
- Quality and quantity of benefits that will be gained and how these can be shared and/or scaled across Greater Sydney, including details of any limitations of the proposal
- Level of innovation proposed to address challenges the community and stakeholders are facing in increasing tree canopy and green cover

2. Engagement (10%)

- Strategies for ongoing engagement of the community and participants
- Ability to apply the outcomes of the project more broadly on completion

3. Viability (20%)

- Appropriate approvals and risk-management procedures
- Realistic timelines to complete the project
- Strategic partnerships and collaborations to support delivery

4. Value for money (20%)

- Detailed and realistic budget
- Contributions provided, be they cash, in-kind or other
- Value for money relative to the scale and impact of the project
- Appropriate use of public funds
- Appropriate provision for contingencies
- Required insurance and consideration of other liabilities

Requirements for successful recipients

Successful applicants must agree to and adhere to the conditions outlined below.

Registration of trees

All trees planted by council as part of this program and otherwise since the inception of the Five Million Trees for Greater Sydney Program (April 2018) must be registered with the department to show the council's and participants' contribution to collective tree-planting targets.

Tree management plan

A management plan must be provided for all plantings to demonstrate how trees and green cover will establish, grow successfully and how water will be used efficiently throughout the project.

Project launch and promotion

The Minister for Planning and Public Spaces, the NSW Government and the Green and Resilient Places division of the Department of Planning, Industry and Environment must be:

- invited to attend any formal launch event (including commencement and completion ceremonies)
- advised four weeks prior to any formal event
- acknowledged for their contribution on all communications and media for the project.

Reporting and monitoring

Successful applicants must complete a milestone or submit a project progress report at a minimum every six months.

Progress reports may include photographs and other evidence of progress as agreed to by the program administrator.

The progress report process will be provided to successful applicants.

It is the responsibility of the funding recipient to alert the department of any issues or risks to completion of the project at the first available opportunity.

Online contract system

To receive funding, successful applicants must accept the program's terms and conditions in the online grants contract acceptance system.

Project management

Councils are asked to nominate a project manager for each project and to notify the department in writing of any changes in project management. Councils are responsible for project management and budgetary control.

Project completion

Projects must be completed within 18 months (excluding an establishment period for tree planting) of the date of accepting the terms and conditions under the funding agreement. Grant funding will lapse after 18 months unless there is prior approval for an extension.

Grant payments

As part of the funding agreement, successful applicants will receive grant funding in instalments. These payments are scheduled against the following project milestones:

Stream 1:

- 1. Commencement of the project (20%)**
- 2. Concept plan finalisation (30%)**
- 3. Commencement of tree planting (40%)**
- 4. Commencement of establishment period and project acquittal (10%)**

A final project report must be submitted as part of the final payment claim. The report must outline the process and outcomes achieved by the applicant and be accompanied by a management plan for a 12-month establishment period for plantings, including a commitment to ongoing maintenance of all trees planted as part of the project.

Stream 2:

- 1. Commencement of the project (20%)**
- 2. Project plan finalisation (40%)**
- 3. Mid-point review (30%)**
- 4. Project acquittal (10%)**

A final project report must be submitted as part of the final payment claim. The report must outline the objectives, operations, outcomes and evaluation of the project. This report must include project findings, photographs, a project launch and evidence of project completion. The department has use and distribution rights to all materials and findings from research funded, either partially or wholly, through this project stream.

For all projects, applicants that do not provide a financial acquittal and project report by the required date will be ineligible for future funding.

Project Administration

Local Government NSW (LGNSW) is responsible for the administration of the grants on behalf of the department.

Insurance requirements

Organisations applying for funding via this program are required to have minimum public liability insurance cover of \$20 million.

We recommend that applicant organisations have personal accident and professional indemnity insurance, however this is not a condition of funding. Organisations that employ staff must comply with the *Workplace Injury Management and Workers Compensation Act 1998 (NSW)*.

Disclaimer

Submission of an application does not guarantee funding. The costs of preparing an application are borne by the applicant.

Privacy policy

The department will collect and store the information you voluntarily provide to enable processing of this grant application.

Any information provided by you will be stored on a database that will only be accessed by authorised personnel and is subject to privacy restrictions. The information will only be used for the purpose for which it was collected.

The department is required to comply with the *Privacy and Personal Information Protection Act 1988*. It collects the minimum personal information to enable it to contact an organisation and to assess the merits of an application.

Applicants must ensure that people whose personal details are supplied with applications are aware that the information is being supplied to the department and how this information will be used.

Notification

All applicants will be notified by email or letter of the outcome of the assessment process.

Endnotes

- 1 Endreny, Theodore. *We calculated how much money trees save for your city*. In The Conversation, April 27 2018. theconversation.com/we-calculated-how-much-money-trees-save-for-your-city-95198
- 2 Wintle, Brendan and Saran Bekessy. *The small patch of bush over your back fence might be key to a species' survival*. In The Conversation, December 13 2019. theconversation.com/the-small-patch-of-bush-over-your-back-fence-might-be-key-to-a-species-survival-108672
- 3 NSW Office of Environment and Heritage Government 2015, *Technical Guidelines for Urban Green Cover in NSW*, NSW Government, Sydney.
- 4 AECOM. (2017) *Green Infrastructure vital step brilliant Australian Cities Report*.
- 5 AECOM. (2017) *Green Infrastructure vital step brilliant Australian Cities Report*.
- 6 Franklin, Deborah. *How Hospital Gardens Help Patients Heal*. In Scientific American, 2012. scientificamerican.com/article/nature-that-nurtures

Newly planted trees protected by tree guards





dpie.nsw.gov.au